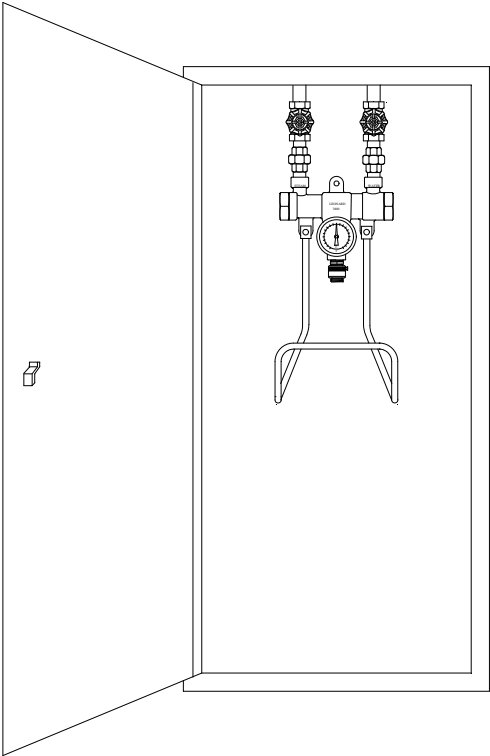


INDUSTRY HOSE STATION

3800-EVBD-CWH

STEAM & WATER BLENDER WITH AUTOMATIC SAFETY SHUTDOWN



3800-EVBD-CWH

- Steam is instantly shut/down upon water supply failure
- 3/4" IPS inlets and outlet.
- Two stop and check valves with color coded heat-resistant handles, and all stainless steel internal components.
- Interior stainless steel control assembly
- Manually adjustable temperature
- Outlet dial thermometer (20 to 240°F, -5 to 115°C)
- Vacuum breaker
- Hose connection
- Rough bronze finish
- Stainless steel hose rack
- Maximum pressure 125 PSI (860 KPA)
- Maximum operating temperature 200°F (93°C)
- Recessed cabinet with door, hinge and lock, stainless steel, #4 finish, top inlets

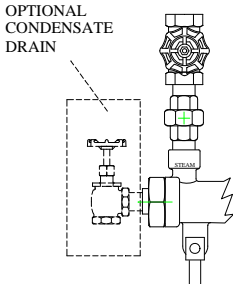
3800-ED Less vacuum breaker

OPTIONS

SUFFIX SCD- Manual steam condensate drain

NOTE: Hose and nozzle not included. If required, please attach separate submittal sheet.

NOTE: Leonard Valve Company reserves the right of product, or design modifications without notice or obligation.



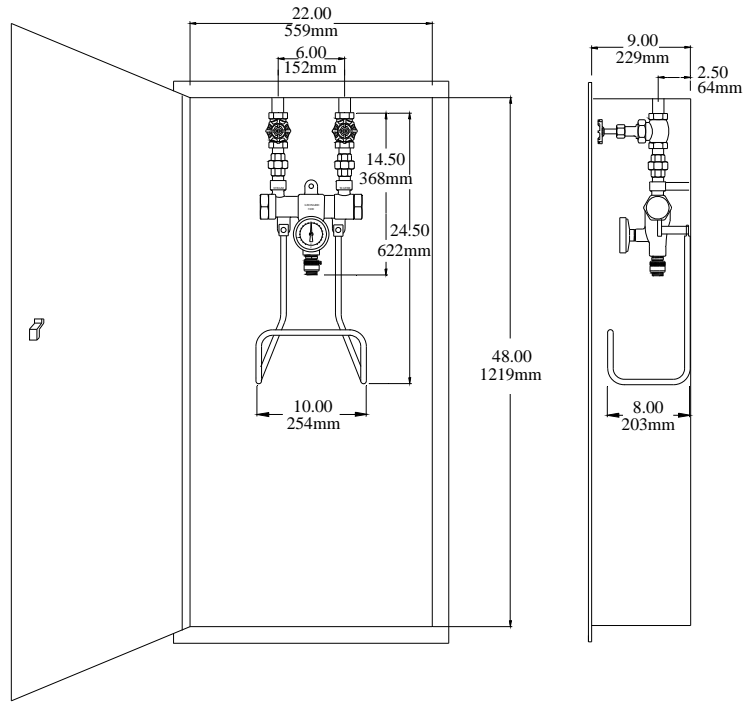
SCD

Job # _____ Arch/Eng. _____ Contractor _____	Engineer's Approval
CAUTION: Follow recommended operating instructions and wear protective clothing during use.	

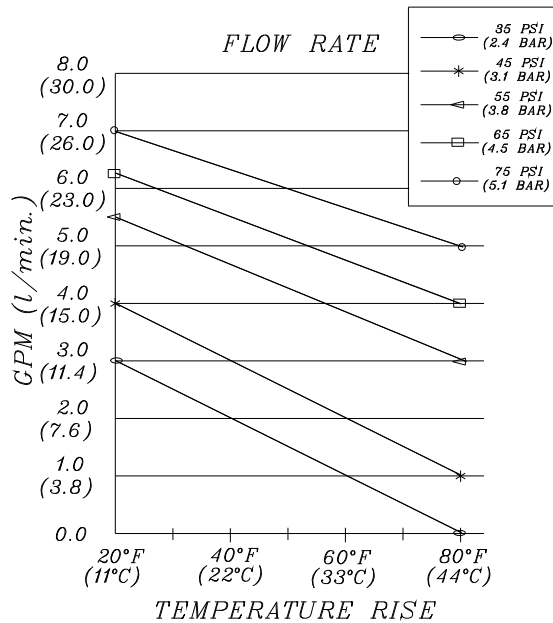


1360 Elmwood Avenue, Cranston, RI 02910 USA
 Phone: 401.461.1200 Fax: 401.941.5310
 Email: info@leonardvalve.com
 Web Site: <http://www.leonardvalve.com>

SEE REVERSE SIDE FOR FLOW CAPACITY CHART



3800-EVBD-CWH



TEMPERATURE RISE

PSI BAR	20°F 11°C	30°F 16°C	40°F 22°C	50°F 27°C	60°F 33°C	70°F 38°C	80°F 44°C	
35 2.4	3.0 11.4	2.5 9.5	2.5 9.5	2.0 7.6	2.0 7.6	1.0 3.8	0.0 0.0	GPM l/min
45 3.1	4.0 15.0	4.0 15.0	3.5 13.0	3.5 13.0	3.0 11.4	2.5 9.5	1.0 3.8	GPM l/min
55 3.8	5.5 21.0	5.0 19.0	4.5 17.0	4.0 15.0	4.0 15.0	3.5 13.0	3.0 11.4	GPM l/min
65 4.5	6.0 23.0	6.0 23.0	5.5 21.0	5.0 19.0	4.5 17.0	4.5 17.0	4.0 15.0	GPM l/min
75 5.1	7.0 26.0	6.5 25.0	6.0 23.0	5.5 21.0	5.5 21.0	5.0 19.0	5.0 19.0	GPM l/min

FLOW RATE (GPM)
(WITH 25 FT HOSE AND N2 NOZZLE ON OUTLET)

Note: Leonard Valve Company reserves the right of product or design modifications without notice or obligation.



© 2012 Leonard Valve Company
Printed in USA

1360 Elmwood Avenue, Cranston, RI 02910 USA
Phone: 401.461.1200 Fax: 401.941.5310
Email: info@leonardvalve.com
Web Site: <http://www.leonardvalve.com>