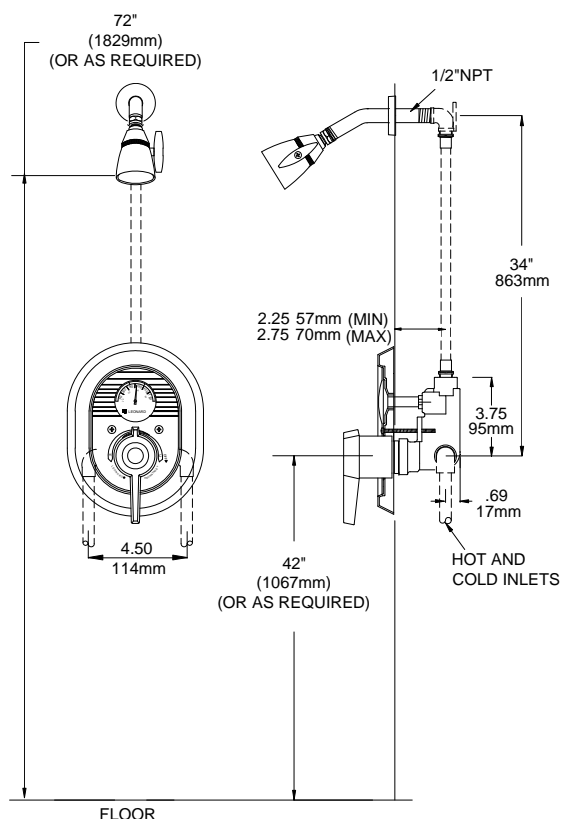


## ADVANTAGE<sup>®</sup> COMBINATIONS

**6701**


### ADVANTAGE<sup>®</sup> 6701

- Pressure Actuated Mixer
- Durable stainless steel balancing piston
- Built-in shutoff for single handle operation
- Removable one piece upper and lower cup seat
- Internal parts of bronze and stainless steel
- Integral dial thermometer
- Bimetal element
- Range 70 to 120°F, 20 to 50°C
- Color coded dual scale; Blue 70 to 90°F, (21 to 32°C), green: 90 to 105°F (32 to 40°C), Red: 105 to 120°F (40 to 49°C (C° shown below)
- Shatterproof convex Lexan<sup>®</sup> crystal
- Type #304 stainless steel case, bezel and stem, (hermetically sealed)
- Meets ASME B403
- Adjustable high temperature limit stop set for 110°F (43°C)
- Cast wall flange and lever handle, chrome plated
- Color coded dial, OFF through H (HOT), with directional indicators
- Maximum operating pressure 125 PSI/860 KPA
- H-03 Shower head, ball joint adjustable spray, arm and flange, 2.5 GPM, (9.5l/min).
- Angle checkstops on inlets



Valve is ASSE · 1016 Certified  
 Valve is CSA · B.125-05 Certified



Note: Leonard Valve Company reserves the right of product, or design modifications without notice or obligation.  
 Note: All piping and fittings not furnished by manufacturer.

<b>Engineer's Approval</b>	Job # _____
	Arch/Eng. _____
	Contractor _____



1360 Elmwood Avenue, Cranston, RI 02910 USA  
 Phone: 401.461.1200 Fax: 401.941.5310  
 Email: [info@leonardvalve.com](mailto:info@leonardvalve.com)  
 Web Site: <http://www.leonardvalve.com>