



# KE19 & KE21 SERIES ELECTRONIC FAUCETS INSTALLATION INSTRUCTIONS

KE19 SERIES WALL MOUNT FAUCETS		
Model No.	Description	Spout
KE19-1000-xA0	Battery Power, .5gpm Vandal Resistant PCA Spray Aerator	3" gooseneck
KE19-1000-xB0	Battery Power, 1.5gpm Vandal Resistant PCA Spray Aerator	
KE19-1100-xA0	AC/DC* Power, .5gpm Vandal Resistant PCA Spray Aerator	
KE19-1100-xB0	AC/DC* Power, 1.5gpm Vandal Resistant PCA Spray Aerator	
KE19-1102-xA0	AC/DC* Power, .5gpm Vandal Resistant PCA Spray Aerator	6" gooseneck
KE19-1102-xB0	AC/DC* Power, 1.5gpm Vandal Resistant PCA Spray Aerator	
KE19-1002-xA0	Battery Power, .5gpm Vandal Resistant PCA Spray Aerator	
KE19-1002-xB0	Battery Power, 1.5gpm Vandal Resistant PCA Spray Aerator	
KE19 SERIES DECK MOUNT FAUCETS		
Model No.	Description	Spout
KE19-4000-xA0	Battery Power, .5gpm Vandal Resistant PCA Spray Aerator	3" gooseneck
KE19-4000-xB0	Battery Power, 1.5gpm Vandal Resistant PCA Spray Aerator	
KE19-4100-xA0	AC/DC* Power, .5gpm Vandal Resistant PCA Spray Aerator	
KE19-4100-xB0	AC/DC* Power, 1.5gpm Vandal Resistant PCA Spray Aerator	
KE19-4102-xA0	AC/DC* Power, .5gpm Vandal Resistant PCA Spray Aerator	6" gooseneck
KE19-4102-xB0	AC/DC* Power, 1.5gpm Vandal Resistant PCA Spray Aerator	
KE19-4002-xA0	Battery Power, .5gpm Vandal Resistant PCA Spray Aerator	
KE19-4002-xB0	Battery Power, 1.5gpm Vandal Resistant PCA Spray Aerator	

Replace "x" with "R" for Rigid Spout or "S" for Adjustable Spout

KE21 SERIES DECK MOUNT FAUCETS	
MODEL NO.	DESCRIPTION
KE21-7005-CA0	Battery Power, .5 Vandal Resistant Aerator, No Deck Plate
KE21-7005-CB0	Battery Power, 1.5 Vandal Resistant Aerator, No Deck Plate
KE21-7105-CA0	AC/DC* Power, .5 Vandal Resistant Aerator, No Deck Plate
KE21-7105-CB0	AC/DC* Power, 1.5 Vandal Resistant Aerator, No Deck Plate
KE21-7205-CA0	AC/DC** Power, .5 Vandal Resistant Aerator, No Deck Plate
KE21-7205-CB0	AC/DC** Power, 1.5 Vandal Resistant Aerator, No Deck Plate
KE21-8005-CA0	Battery Power, .5 Vandal Resistant Aerator, 4" Deck Plate
KE21-8005-CB0	Battery Power, 1.5 Vandal Resistant Aerator, 4" Deck Plate
KE21-8105-CA0	AC/DC* Power, .5 Vandal Resistant Aerator, 4" Deck Plate
KE21-8105-CB0	AC/DC* Power, 1.5 Vandal Resistant Aerator, 4" Deck Plate
KE21-8205-CA0	AC/DC** Power, .5 Vandal Resistant Aerator, 4" Deck Plate
KE21-8205-CB0	AC/DC** Power, 1.5 Vandal Resistant Aerator, 4" Deck Plate
KE21-9005-CA0	Battery Power, .5 Vandal Resistant Aerator, 8" Deck Plate
KE21-9005-CB0	Battery Power, 1.5 Vandal Resistant Aerator, 8" Deck Plate
KE21-9105-CA0	AC/DC* Power, .5 Vandal Resistant Aerator, 8" Deck Plate
KE21-9105-CB0	AC/DC* Power, 1.5 Vandal Resistant Aerator, 8" Deck Plate
KE21-9205-CA0	AC/DC** Power, .5 Vandal Resistant Aerator, 8" Deck Plate
KE21-9205-CB0	AC/DC** Power, 1.5 Vandal Resistant Aerator, 8" Deck Plate

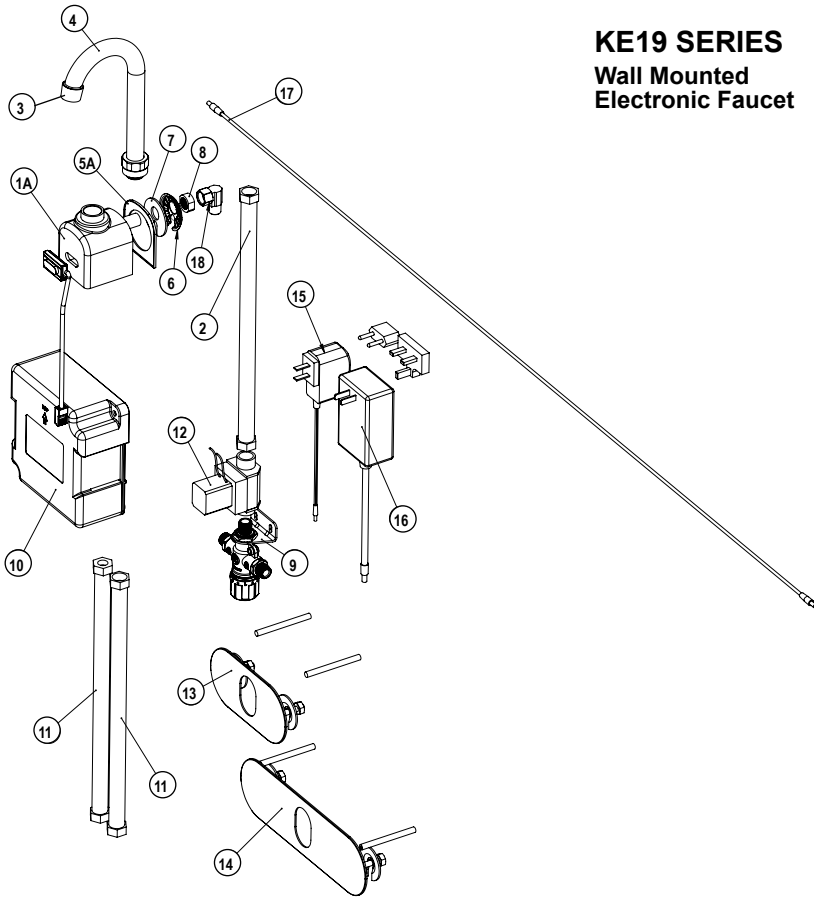
## NOTE:

\*Includes 9V 800 mA UL listed adapter, US Plug.

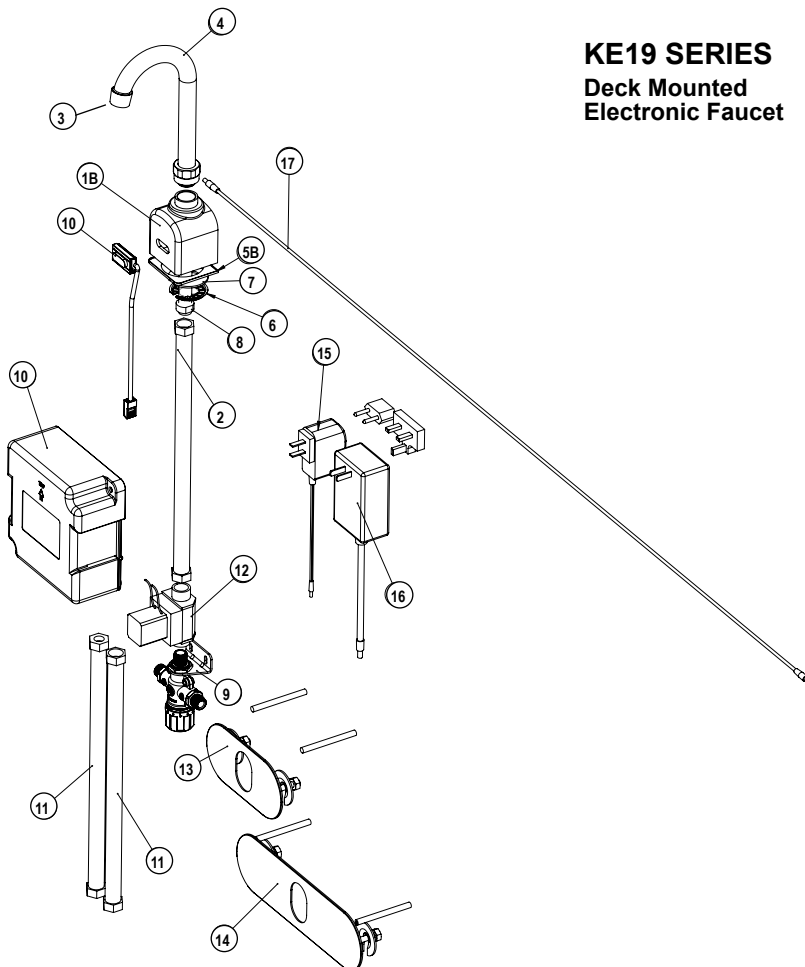
\*\*Includes daisy chain cable to connect primary and (1) secondary faucet; additional K19-X037 cable required for each additional faucet (up to 4 faucets total).



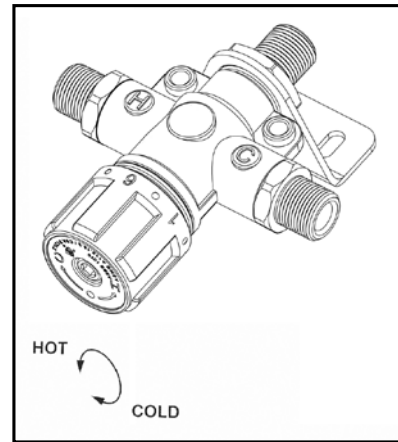
## KE19 SERIES Wall Mounted Electronic Faucet



## KE19 SERIES Deck Mounted Electronic Faucet

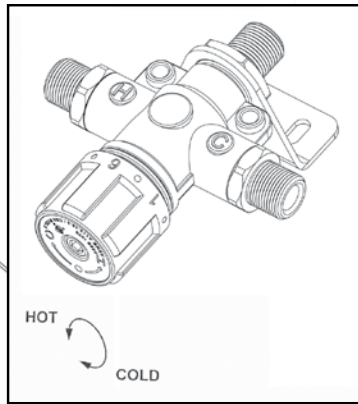
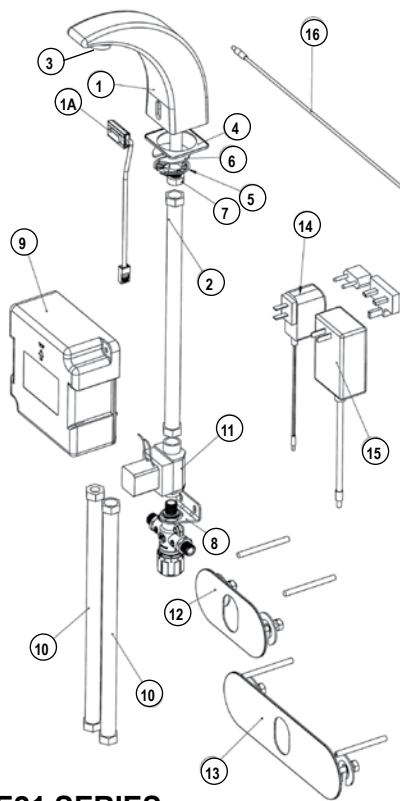


Item No.	Model No.	Description
1A	KL19-Y004	Faucet Body - Wall Mount
1B	KL19-Y003	Faucet Body - Deck Mount
2	KL12-Y020	Hose-Water Supply-Armor Jacketed
3	AERATOR	Selection (Based on GPM)
4	KS11-12-X000	LT Spout
5A	K19-X003	Gasket - Wall Mount Faucet Body
5B	K19-X005	Gasket - Deck Mount Faucet Body
6	K19-X023	Lockwasher
7	K19-X021	Washer
8	K19-X022	Nut
9	KL19-X025	Thermostatic Mixing Valve
10	KL19-Y002	Below Deck Electronics Unit (Electronics Box)
11	KL84-604145	3/8" Compression Fitting Low Lead Hose (18" Length)
12	KL19-X002	Low Lead Solenoid
13	K19-Y004	4" Plate Assembly (Optional)
14	K19-Y008	8" Plate Assembly (Optional)
15	K19-X033	9V 800 mA UL Type Adaptor US Plug (For Only One Faucet)
16	K19-X034	9V 3A UL Type Adaptor US Plug (Up to Four Faucets and Daisy Chain Cables Required)
17	K19-X037	Daisy Chain Cable to Inter-Connect Faucet
18	KL19-X024	Low Lead Fitting



### THERMOSTATIC MIXING VALVE SPECIFICATIONS

Material	Valve Body – Brass
Minimum operating pressure	10 psi
Maximum operating temp.	125 psi
Mix water outlet temp. limit	120°F (49°C)
Inlet temperatures:	
Hot inlet	120°F - 180°F (4°C - 27°C)
Cold inlet	39°F - 85°F (20°C - 49°C)
Temperature setting range	68°F - 120°F (20°C - 49°C)
Factory preset temperature	38°C±2°C
Temperature stability	±2°C
Minimum flow rate	0.4 gpm @ 10 psi
Connections (in & out)	9/16" x 24 UNEF



#### THERMOSTATIC MIXING VALVE SPECIFICATIONS

Material	Valve Body – Brass
Minimum operating pressure	10 psi
Maximum operating temp.	125 psi
Mix water outlet temp. limit	120°F (49°C)
Inlet temperatures:	
Hot inlet	120°F - 180°F (4°C - 27°C)
Cold inlet	39°F - 85°F (20°C - 49°C)
Temperature setting range	68°F - 120°F (20°C - 49°C)
Factory preset temperature	38°C±2°C
Temperature stability	±2°C
Minimum flow rate	0.4 gpm @ 10 psi
Connections (in & out)	9/16" x 24 UNEF

Item No.	Model No.	Description
1	KL21-Y002	Body and Shank Assembly
2	KL12-Y020	Hose-Water Supply-Armor Jacketed
3	AERATOR	Selection (Based on GPM)
4	K21-X005	Gasket - Deck Mount Faucet Body
6	K19-X023	Lockwasher
6	K19-X021	Washer
7	K19-X022	Nut
8	KL19-X025	Thermostatic Mixing Valve
9	KL19-Y002	Below Deck Electronics Unit (Electronics Box)
10	KL84-604145	3/8" Compression Fitting Low Lead Hose (18" Length)
11	KL19-X002	Low Lead Solenoid
12	K19-Y004	4" Plate Assembly (Optional)
13	K19-Y008	8" Plate Assembly (Optional)
14	K19-X033	9V 800 mA UL Type Adaptor US Plug (For Only One Faucet)
15	K19-X034	9V 3A UL Type Adaptor US Plug (Up to Four Faucets and Daisy Chain Cables Required)
16	K19-X037	Daisy Chain Cable to Inter-Connect Faucet

### KE21 SERIES Deck Mounted Electronic Faucet

#### Active Infra Red Range Adjustment:

A provision to use a multipurpose push button on the below deck PC board is included. Depressing the button will have multiple functions as described below.

Depress PB (seconds)	Action	LED Indication
3-6	Enter range adjustment mode	Flash at 1 second/min. until completed
6-9	Enter time-out mode	See instructions below
10-15	Auto flush cycle	See instructions below

#### Range Adjustment

Minimum trigger distance – 2"  
Maximum trigger distance – 8.5"  
Factory setting – 5"

##### To change distance –

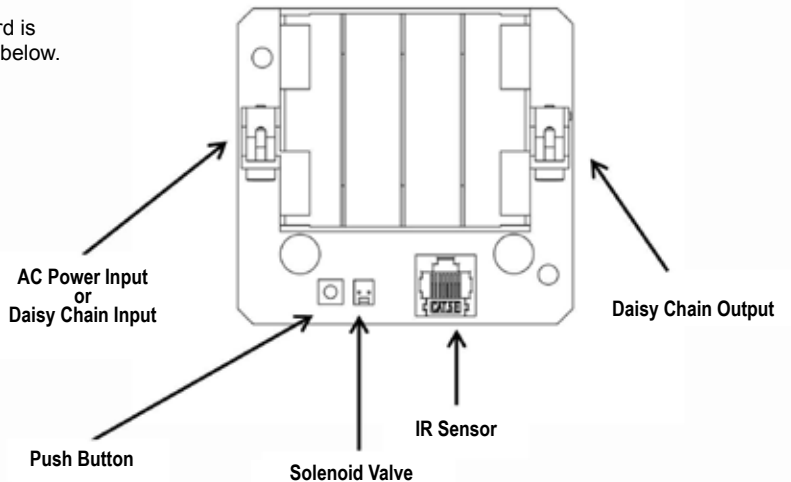
- Depress the Push Button for 3 to 6 seconds. When LED flashes, the system is in the Range Adjustment Mode.
- Hold a gray colored card at the desired distance and wait until the LED stops flashing. The new value is now set as the trigger distance.

#### Time-out

The time-out setting limits the maximum time of water flow. There are 2 different preset time-outs of 20 seconds and 30 seconds. The factory preset is 20 seconds.

##### To change time-out–

- Depress the Push Button for 6 to 9 seconds. The LED will glow solid red.
- Depress the Push Button momentarily to set the time-out – single flash indicates 30 second time-out; double flash indicates 20 second time-out.
- After two minutes of no activity, the system will save the last value.



#### Auto Flush Cycle

Depress the Push Button for 10 to 15 seconds. The LED will flash four times per second. The infrared sensor is now disabled and water will flow. To return to normal operating mode, depress the Push Button.

#### Low Battery Indicator

When voltage reaches approximately 4.5 V, a RED LED will flash once every second. The system will be capable of actuating a minimum of 1000 additional cycles on a low battery.

#### Cleaning

To maintain the finish of your Encore faucet, please use a soft cloth with non-abrasive cleaner.

## TROUBLE-SHOOTING GUIDE

Note: Before attempting any repair, turn off the water supply to the faucet.

PROBLEM	POSSIBLE CAUSE	DIAGNOSIS	SOLUTION
Faucet will not turn on.	Water not ON.	Check water supply.	Turn on water supply.
	Power supply failure.	Check batteries, polarity of batteries and connection.	Replace batteries, reconnect.
	Filter in thermostatic valve is clogged.	Open hot and cold supplies in thermostatic valve where filter wire mesh is located.	Clean hot and cold filters in thermostatic valve.
	Solenoid valve is not working.	Solenoid is not clicking.	Replace solenoid.
	Batteries are weak.	Red LED flashes every one second.	Replace batteries. Faucet will run only 1000 additional cycles.
	Batteries are dead.	Red LED stays on.	Replace batteries.
	Electronic PCB is defective.	Press push button for 10 seconds; water should flow.	Replace electronics box.
	Sensor is not working.	Place hand in front of sensor; LED should blink.	Replace faucet body with sensor.
Faucet will not turn off.	Solenoid valve is not working.	Turn off water supply and actuate the faucet. Solenoid does not click.	Replace the solenoid valve.
		Turn off water supply and actuate the faucet. Solenoid clicks.	Clean the solenoid valve.
	Electronic PCB is defective.	Press push button for 10 seconds; water should flow.	Replace electronics box.
Leaky Faucet (KE21 Series).	Aerator is not installed properly.	Faucet drips continuously when water supply is on.	Remove aerator and reinstall. Make sure washer stays in position.
Leaky Faucet (All Series).	Filter is not clean; debris trapped in valve.	Dripping.	Clean valve filter; reinstall and actuate faucet several times.
Water is too hot or too cold.	Mixing valve not installed and/or needs adjustment.	—	Install mixing valve and/or adjust.

## KE19 & KE21 SERIES ELECTRONIC FAUCETS WARRANTY

Encore Plumbing Products are manufactured to a rigid code of quality standards and subjected to extensive testing prior to shipment. We ensure that each product that leaves our factory is in perfect working order. With proper care this Encore Product will provide its user years of satisfying service.

Component Hardware warrants that its Encore KE19 and KE21 Series of electronic faucets will remain free from defects in material and workmanship for three (3) years from the user's date of purchase. Liability under this limited warranty is restricted to replacement of, or repair of, the Encore Series product or part found to be defective. Component Hardware shall not be responsible for labor costs or any other damages, either direct or consequential. Encore Series products or parts which have been altered in any manner after purchase are excluded from this limited warranty. Component Hardware does not assume responsibility for any damage incurred as a result of shipping. Those claims must be filed with the shipper. This warranty does not apply in states or provinces, which do not permit restrictions on the length of warranty or on the exclusion of direct or consequential damages.

Replacement or repair of a product or part under this limited warranty will be made within a reasonable time after Component Hardware is notified of the alleged defect or, if Component Hardware desires to inspect the allegedly defective product or part, within a reasonable time after that inspection.

ANY WARRANTIES, REPRESENTATIONS OR STATEMENTS BY AN AGENT OF COMPONENT HARDWARE THAT DIFFER IN ANY WAY FROM THE TERMS OF THIS WRITTEN AGREEMENT SHALL HAVE AND SHALL BE GIVEN NO FORCE OR EFFECT.

No defective product or part should be shipped to Component Hardware without authorization obtained from it in advance. Claims for unauthorized shipping expenses will not be honored. At Component Hardware's option, it may request return of the allegedly defective product or part for inspection. Permitted returns of allegedly defective products or parts under this limited warranty shall be delivered to Component Hardware, 1890 Swarthmore Avenue, Lakewood, NJ 08701. Please mark carton Attn: **ENCORE WARRANTY DEPARTMENT**.

THIS LIMITED WARRANTY IS GIVEN EXPRESSLY AND IN LIEU OF ALL OTHER WARRANTIES, EXPRESS OR IMPLIED, OF MERCHANTABILITY, FITNESS FOR PARTICULAR PURPOSE, OR OTHERWISE, AND CONSTITUTES THE ONLY WARRANTY MADE BY COMPONENT HARDWARE.



1890 Swarthmore Avenue • PO Box 2020, Lakewood, New Jersey 08701-4530 U.S.A.  
www.componenthardware.com

FOR ADDITIONAL INFORMATION ON REPLACEMENT PARTS OR A LIST OF LOCAL DISTRIBUTORS  
PLEASE VISIT OUR WEBSITES: [www.encoreplumbing.com](http://www.encoreplumbing.com) • [www.componenthardware.com](http://www.componenthardware.com)