



ADA Compliant Self-Closing

The Model S4H is an automatic draining, sanitary, frost proof Yard Hydrant, with ASSE 1052 double check backflow preventer. This hydrant is designed for use in public areas such as campgrounds and parks or any location where potable water is required.

Unlike conventional hydrants which drain the water into the ground, the Model S4H employs a reservoir below frost line to contain the water. The hydrant is completely sealed to prevent surface and ground water from entering reservoir or service line. The valve, with its unique venturi design, removes the stored water along with the water being used.

The Model S4H is equipped with a diverter spout, which allows the hydrant to be operated independently from the backflow preventer. When the hydrant is to be used with a hose, the diverter sleeve is pulled down during flow and water is automatically diverted to the backflow preventer hose connection. The diverter will work with or without a hose attached to the backflow preventer and will automatically release any time the hydrant is shut off.

An important feature of the S4H is easy maintenance. The entire working portion of the hydrant can be removed from the reservoir without any excavation.

SPECIFICATIONS:

HOSE CONNECTION BACKFLOW PREVENTER (BFP)

- NIDEL® Model 37HF
- ASSE 1052 Approved
- Field Testable (see instruction sheet)
- Two Check Valves

OPTIONAL: ASSE 1057 listed - Consists of NIDEL® Model 34HF Single Check Vacuum Breaker

Order example: S4H-Bury Depth-SC

ADA COMPLIANT - Meets ADA requirements for height and 5 lbs. Max operating force.

PATENT - U.S. Patent number 5246028 (Additional Patents Pending)

FEMALE INLET - 1" N.P.T.

FINISH - Painted Forest Service brown.

MIN PRESSURE - 20 psi

MAX PRESSURE - 100 psi

MAX TEMPERATURE - 120° F

FLOW RATES (GPM)

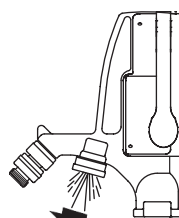
| PSI | DIVERTER | BFP |
|-----|----------|------|
| 20 | 7.0 | 1.5 |
| 30 | 9.0 | 3.0 |
| 40 | 10.0 | 5.0 |
| 50 | 11.0 | 6.0 |
| 60 | 12.0 | 7.0 |
| 70 | 13.0 | 8.0 |
| 80 | 14.0 | 9.0 |
| 90 | 14.5 | 9.5 |
| 100 | 15.0 | 10.0 |

When ordering, specify bury depth.

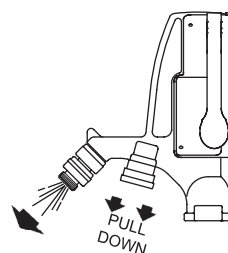
WOODFORD



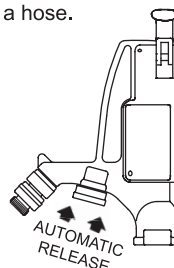
Backflow Protected Automatic Draining Freezeless, Self Closing Sanitary Yard Hydrant Model S4H



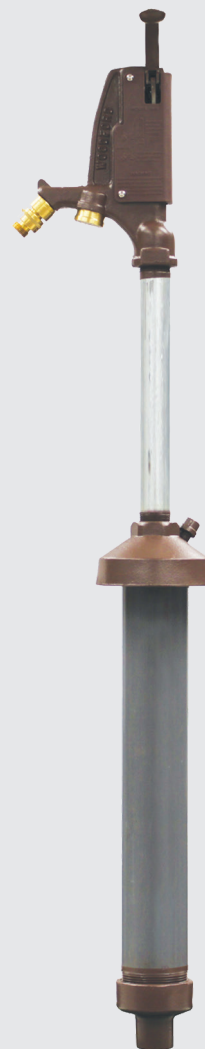
When the hydrant is opened to an ON position, water will flow through the diverter spout.



By pulling down on the diverter sleeve during flow, water will be diverted through the backflow preventer (BFP), and allow use with a hose.



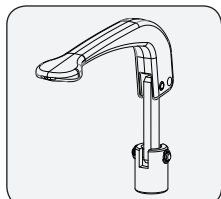
When the hydrant is closed to an OFF position, the diverter will automatically release, allowing the hydrant to drain into the reservoir. The hydrant will drain even if a pressurized or non pressurized hose is attached.



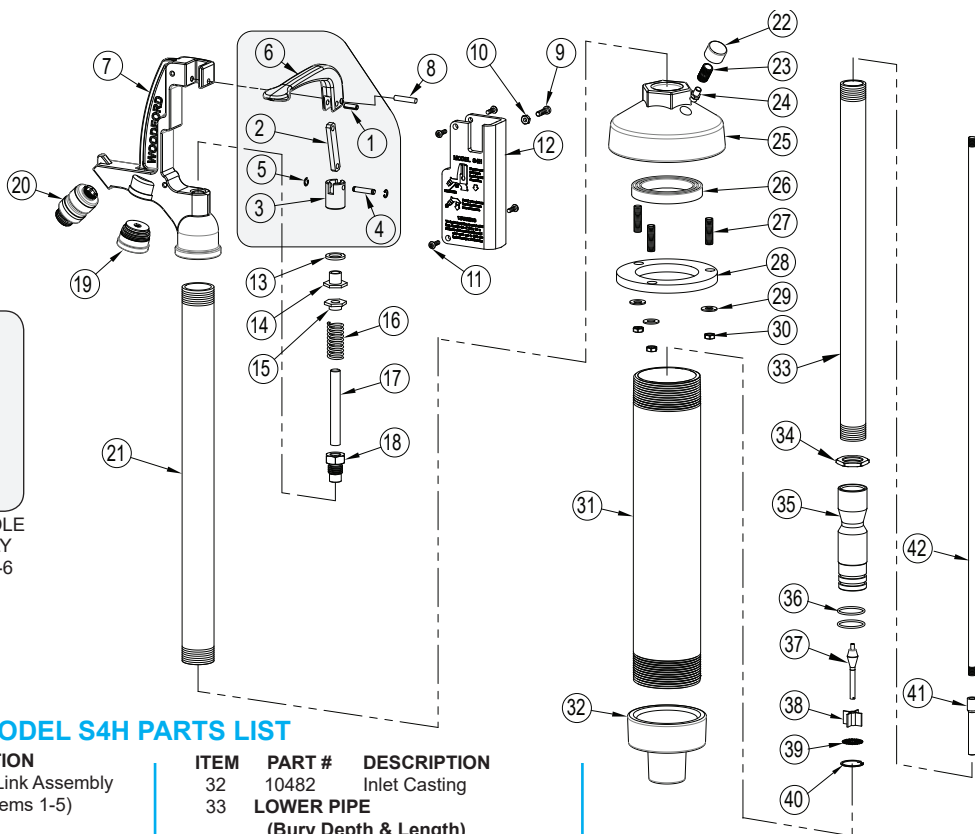
NOTICE

FOR WINTER USE: The hydrant must be operated at full flow, through the diverter, for a minimum of 30 seconds before and after each use to drain the hydrant and prevent freezing.

For Installation / Troubleshooting Instructions go to www.woodfordmfg.com or call 1-800-621-6032



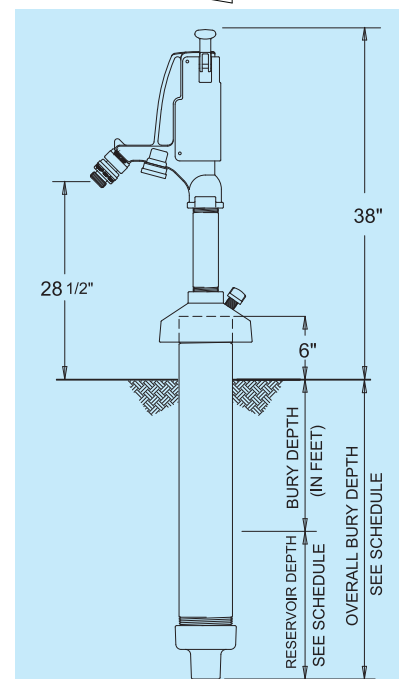
*ITEM 6 - 15139 HANDLE AND LINK ASSEMBLY INCLUDES PARTS 1-6



MODEL S4H PARTS LIST

| ITEM | PART # | DESCRIPTION |
|-------|---------|--|
| | 15137 | Operating Link Assembly (Includes Items 1-5) |
| 1 | 50040 | Roll Pin |
| 2 | 10375 | Clevis Link |
| 3 | 10376 | Clevis |
| 4 | 10377 | Clevis Pin |
| 5 | 10319 | E-Ring (2) |
| 6 | 15139 | *Handle & Link Assembly |
| 7 | 10552 | S4H Head |
| 8 | 10551 | Handle Pin |
| 9 | 10328 | Stop Screw |
| 10 | 10329 | Jam Nut |
| 11 | 10336 | Head Cover Screws (4) |
| 12 | 15240 | Head Cover |
| 13 | 10307 | Washer |
| 14 | 10308 | Swivel Nut |
| 15 | 10494 | Lock Nut |
| 16 | 10489 | Spring |
| 17 | 10465 | Operating Rod Extension |
| 18 | 15232 | Packing Nut Assembly (Includes O-Ring-10464) |
| 19 | 15220 | Diverter Assembly |
| 20 | 37HF-BR | 37HF Backflow Preventer |
| 21 | 10496 | Upper Pipe |
| 22 | 10555 | Vent Cap |
| 23 | 10556 | 3/8" Pipe Nipple |
| 24 | 15136 | Sniffer Valve |
| 25 | 10554 | Casing Cover |
| 26 | 10491 | Cup Gasket |
| 27 | 10534 | Threaded Stud (3) |
| 28 | 10483 | Reservoir Flange |
| 29 | 10332 | Flat Washer (3) |
| 30 | 10331 | Hex Nut (3) |
| 31 | | RESERVOIR PIPE |
| | | (Bury Depth & Length) |
| 10511 | | 1' Bury (27 7/16" Long) |
| 10512 | | 2' Bury (41 1/16" Long) |
| 10513 | | 3' Bury (54 13/16" Long) |
| 10514 | | 4' Bury (68 7/16" Long) |
| 10515 | | 5' Bury (82 5/16" Long) |
| 10516 | | 6' Bury (95 15/16" Long) |
| 10517 | | 7' Bury (109 11/16" Long) |

| ITEM | PART # | DESCRIPTION |
|-------|--------|-------------------------|
| 32 | 10482 | Inlet Casting |
| 33 | | LOWER PIPE |
| | | (Bury Depth & Length) |
| 10501 | | 1' Bury (25 1/8" Long) |
| 10502 | | 2' Bury (38 3/4" Long) |
| 10503 | | 3' Bury (52 1/2" Long) |
| 10504 | | 4' Bury (66 1/8" Long) |
| 10505 | | 5' Bury (80" Long) |
| 10506 | | 6' Bury (93 5/8" Long) |
| 10507 | | 7' Bury (107 3/8" Long) |
| 34 | 10334 | 1" Lock Nut |
| 35 | 15233 | Venturi Assembly |
| 36 | 10321 | Venturi O-Rings (2) |
| 37 | 15134 | Valve Plug |
| 38 | 10322 | Valve Plug Guide |
| 39 | 10469 | Inlet Screen |
| 40 | 10323 | Snap Ring #3000 |
| 41 | 10497 | Coupling |
| 42 | | OPERATING ROD |
| | | (Bury Depth & Length) |
| 10521 | | 1' Bury (47 1/8" Long) |
| 10522 | | 2' Bury (60 3/4" Long) |
| 10523 | | 3' Bury (74 1/2" Long) |
| 10524 | | 4' Bury (88 1/8" Long) |
| 10525 | | 5' Bury (102" Long) |
| 10526 | | 6' Bury (115 5/8" Long) |
| 10527 | | 7' Bury (129 3/8" Long) |



Rough-In Dimensions

| Bury Depth | 1' | 2' | 3' | 4' * | 5' * | 6' * | 7' * |
|--------------------|-----|---------|---------|------|---------|---------|----------|
| Reservoir Depth | 12" | 13 5/8" | 15 3/8" | 17" | 18 7/8" | 20 1/2" | 22 1/4" |
| Overall Bury Depth | 24" | 37 5/8" | 51 3/8" | 65" | 78 7/8" | 92 1/2" | 106 1/4" |
| Weight (lbs) | 36 | 40 | 45 | 49 | 54 | 58 | 62 |

* Must ship by truck line due to length.

For more information contact...

WOODFORD MANUFACTURING COMPANY

2121 Waynoka Road, Colorado Springs, Colorado 80915 • Phone: (800) 621-6032 • Fax: (800) 765-4115

To view our complete product line visit: www.woodfordmfg.com or email: sales@woodfordmfg.com

A Division Of WCM Industries, Inc.