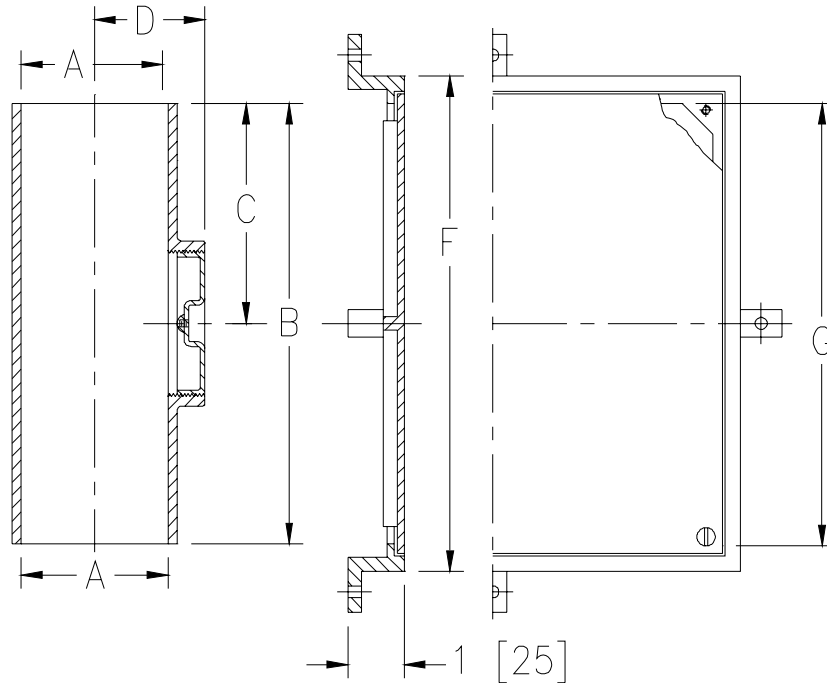


**Z1447**

TAG _____

CLEANOUT TEE W/ SQUARE WALL ACCESS COVER

Dimensional Data (inches and [mm]) are Subject to Manufacturing Tolerances and Change Without Notice



| Dimensions In Inches | | | | | | | | | Approx. Wt. Lbs. [kg] |
|----------------------|-------------|-------------|--------------|--------------|--------------|----------|-------------|-------------|-----------------------------|
| A- Pipe Size | F Square | G Square | NH | | | HB X SP | | | |
| | | | B | C | D | B | C | D | |
| 2 [51] | 7 [178] | 6 [152] | 6-3/8 [162] | 3-3/16 [81] | 1-3/4 [44] | 10 [254] | 4-1/2 [114] | 2-3/4 [70] | 11 [5] |
| 3 [76] | | | 7-3/4 [197] | 3-7/8 [98] | 2-1/2 [64] | 12 [305] | 5-3/4 [146] | 3 [76] | 18 [8] |
| 4 [102] | 9 [229] | 8 [203] | 8-7/8 [225] | 4-7/16 [113] | 3 [76] | 12 [305] | 5-3/4 [146] | 3-1/2 [89] | 20 [9] |
| 5 [127] | | | — | — | — | 13 [330] | 6-1/4 [159] | 4 [102] | 21 [10] |
| 6 [152] | | | 12-1/2 [318] | 6-1/4 [159] | 4-5/16 [110] | 14 [356] | 6-3/4 [171] | 4 1/2 [114] | 31 [14] |

ENGINEERING SPECIFICATION: ZURN ZN1447

Cleanout Tee, Dura-Coated cast iron, gas and watertight ABS tapered thread plug and square, smooth stainless steel secured wall access cover and nickel bronze frame.

OPTIONS (Check/specify appropriate options)**PIPE SIZE**

2 thru 4-6 [51 thru 102-152]
2 thru 6 [51 thru 152]

OUTLET (Specify size/type)

___ NH No-Hub
___ HB X SP Hub x Spigot

PREFIXES

___ ZB D.C.C.I. with Polished Bronze Cover
___ ZN D.C.C.I. with Polished Stainless Steel Cover*

SUFFIXES

___ -A Raised Head Plug
___ -BP Bronze Plug
___ -G Galvanized Cast Iron
___ -SC Nickel Bronze Scoriated Cover

___ -TX Square Top Recessed for 1/8 [3] Tile
___ -VP Vandal-Proof Secured Top

*REGULARLY FURNISHED UNLESS OTHERWISE SPECIFIED

REV. E DATE: 11/05/10 C.N. NO. 120259**DWG. NO. 58768****PRODUCT NO. Z1447**

ZURN INDUSTRIES, LLC. ♦ SPECIFICATION DRAINAGE OPERATION ♦ 1801 Pittsburgh Ave. ♦ Erie, PA 16514

Phone: 814/455-0921 ♦ Fax: 814/454-7929 ♦ World Wide Web: www.zurn.com

In Canada: ZURN INDUSTRIES LIMITED ♦ 3544 Nashua Drive ♦ Mississauga, Ontario L4V1L2 ♦ Phone: 905/405-8272 Fax: 905/405-1292