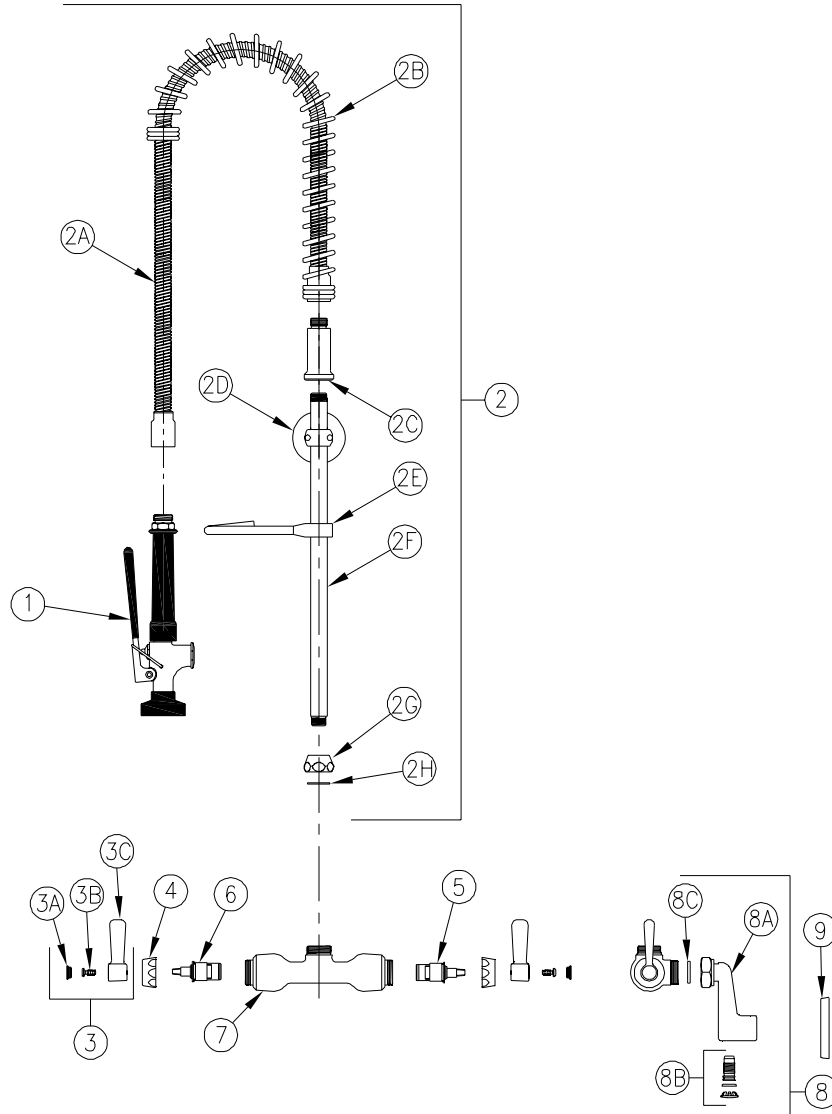


PRE-RINSE

Z841X1 Parts List



Item	Part Number	Description	Qty.	Item	Part Number	Description	Qty.
1	Z80000-PR1	Pre-Rinse Unit	1	3B	62464001	10-32 Screw	2
2	Z800X0	X Spout Riser Support Assembly	1	3C	59487001	Lever Handle	2
2A	61704036	Stainless Steel Hose	1	4	59523001	Handle Nut	2
2B	61896001	Spring	1	5	59517002	Short Hot Cartridge	1
2C	61700002	Riser Adaptor Outlet	1	6	59517001	Short Cold Cartridge	1
2D	Z80000-RS	Pre-Rinse Pipe Support	1	7	59464001	Body	1
2E	Z80000-PSH	Hook and Screw	1	8	G63364	Long Supply Arm With Check Stops	2
2F	61917023	Riser Tube	1	8A	60810003	Long supply Arm	1
2G	61699001	Adaptor, Riser Inlet	1	8B	G60527	Screwdriver Integral Stop Assembly	1
2H	69974001	Gasket	1		59536001	Stop Plug	1
3	G60501	2-1/2" [64mm] Lever Handles	1		58155013	O-Ring	1
3A	G60500	Hot/Cold Color-Coded Indexes	1		59667001	Hole Plug	1
	59454001	Hot Index	1	8C	59748001	Gasket	1
	59454002	Cold Index	1	9	G65300	Escutcheon Assembly	2

ZURN INDUSTRIES, INC. ♦ COMMERCIAL BRASS OPERATION ♦ 2640 SOUTH WORK STREET ♦ FALCONER NY 14733

Phone: 1-716-665-1132 ♦ Fax: 1-716-665-1135 ♦ World Wide Web: www.zurn.com

In Canada: ZURN INDUSTRIES LIMITED ♦ 3544 Nashua Drive ♦ Mississauga, Ontario L4V1L2 ♦ Phone: 905/405-8272 Fax: 905/405-1292