

AQUASPEC[®] FAUCETS

MODEL - Z86100 SERIES
SINGLE BASIN METERING



TECHNICAL INFORMATION

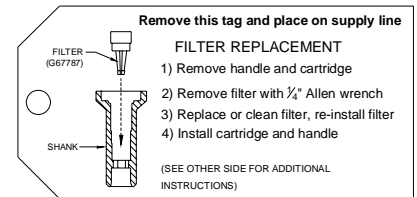
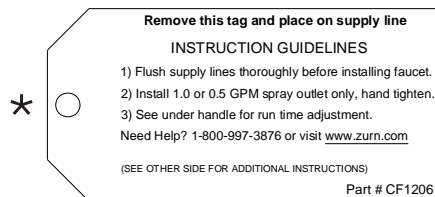
FLOW: 0.25 GPC MAXIMUM; PRESET AT FACTORY TO 10 TO 15 SECONDS @ 80 PSI ADJUSTABLE
MAXIMUM PRESSURE: 80 PSI
MAXIMUM TEMPERATURE: 140° F
- CAN USE QUARTER TURN CERAMIC DISK CARTRIDGE

IMPORTANT THE WATER SUPPLY LINES MUST BE THOROUGHLY FLUSHED BEFORE INSTALLATION TO PREVENT FOREIGN MATTER AND DEBRIS FROM CLOGGING AND/OR DAMAGING INTERNAL COMPONENTS

IMPORTANT THE FAUCET HAS AN INTEGRAL SHANK FILTER ASSEMBLY INSTALLED IN THE BODY UNDER THE METERING CARTRIDGE TO PREVENT FOREIGN MATTER AND DEBRIS FROM DAMAGING THE FAUCET. THE INTEGRAL FILTER MAY BE REMOVED TO BE BACK-FLUSHED AND CLEANED IF INSUFFICIENT FLOW IS DETECTED. THE INTEGRAL SHANK FILTER ASSEMBLY MUST BE RE-INSTALLED AFTER SERVICING TO ENSURE PROPER FUNCTIONING OF THE METERING CARTRIDGE.

* INSTALLATION INSTRUCTIONS

1. THE WATER SUPPLY LINE MUST BE THOROUGHLY FLUSHED BEFORE FAUCET INSTALLATION.
2. REMOVE FAUCET BODY FROM CARTON AND PLACE GASKET (#7A) ON SHANK.
3. PLACE FAUCET ON SINK, MOUNT LOCKWASHER (#7B) AND MOUNTING NUT (#7C) ONTO SHANK FROM UNDER SINK.
4. HAND TIGHTEN MOUNTING NUT (#7C). MAKE SURE FAUCET IS CENTERED PROPERLY. DO NOT OVER TIGHTEN, YOU COULD DAMAGE THE FIXTURE.
5. ATTACH LAVATORY SUPPLY TO THE FAUCET WITH RISER NUT (#7D).
6. REMOVE MAINTENCE TAG FROM SPOUT END AND ATTACH TO SHANK OF FAUCET UNDER SINK FOR FUTURE REFERENCE * .
7. OPTIONAL GRID STRAINER (-G)/HANDICAP OFFSET GRID DRAIN (-GH):
INSTALL GRID STRAINER IN SINK OUTLET AND PLUMB WASTE CONNECTION.
8. TURN SUPPLY WATER ON AND OPERATE THE FAUCET WHILE CHECKING FOR LEAKS
9. INSTALL SPRAY OUTLET (#6) INTO FAUCET AND HAND TIGHTEN.
10. METERING CARTRIDGE IS FACTORY PRESET FOR A 10 TO 15 SECOND CYCLE AT 80 PSI, IF ADJUSTMENT IS NECESSARY, SEE "ADJUSTING THE CYCLE TIME" SECTION (PAGE 2).



ZURN INDUSTRIES, LLC ♦ COMMERCIAL BRASS OPERATION ♦ 2640 SOUTH WORK STREET ♦ FALCONER NY 14733

Phone: 1-800-997-3876 ♦ Fax: 1-919-775-3541 ♦ www.zurn.com

In Canada: ZURN INDUSTRIES LIMITED ♦ 3544 Nashua Drive ♦ Mississauga, Ontario L4V1L2 ♦ Phone: 905/405-8272 Fax: 905/405-1292

MAINTENANCE

1. YOUR ZURN AQUASPEC FAUCET HAS A HIGHLY POLISHED NICKEL CHROME PLATED FINISH. CLEAN WITH SOAP AND WATER OR A MILD CLEANER WHICH IS SAFE FOR CHROME PLATING. DO NOT USE ACIDS OR TOILET BOWL CLEANER AS THEY WILL DAMAGE THE FINISH.
2. METERING CARTRIDGE (#3) REMOVAL AND REPLACEMENT (SEE SERVICE VIDEO AT WWW.ZURN.COM/OPERATIONS/AQUASPEC/PAGES/SERVICEVIDEOMENU.ASP)
 - 2.1. REMOVE COLORED INDEX BUTTON (#1C) FROM HANDLE (#1A)
 - 2.2. LOOSEN SET SCREW (#1B) IN HANDLE WITH 3/32" ALLEN WRENCH
 - 2.3. PULL UP ON HANDLE TO REMOVE FROM STEM (#2C) OF HANDLE NUT ASSEMBLY (#2)
 - 2.4. REMOVE HANDLE NUT ASSEMBLY (#2) USING 1-1/8" HEX 6-POINT SOCKET
 - 2.5. REMOVE METERING CARTRIDGE (#3) BY LIFTING OUT OF FAUCET BODY (#5). IT MAY BE NECESSARY TO OPEN THE SUPPLY STOP SLIGHTLY TO ALLOW WATER PRESSURE TO PUSH THE METERING CARTRIDGE UPWARD.
 - 2.6. INSPECT METERING CARTRIDGE (#3) FOR WORN PARTS, DAMAGED PARTS AND ANY CONTAMINATION THAT MAY BE PREVENTING THE METERING CARTRIDGE FROM MOVING FREELY OR SEATING. OTHER THAN CLEANING ANY TRAPPED DEBRIS, THERE ARE NO SERVICEABLE PARTS IN THE METERING CARTRIDGE. CONTAMINATED OR DAMAGED METERING CARTRIDGE ASSEMBLIES SHOULD BE REPLACED.
 - 2.7. REVERSE STEPS 2.1 THROUGH 2.5 FOR RE-ASSEMBLY. TIGHTEN CAP (#2F) WITH 1-1/8" HEX 6-POINT SOCKET UNTIL NO WATER IS LEAKING FROM UNDER THE HANDLE NUT ASSEMBLY WHEN THE FAUCET IS RUNNING. HOLD DOWN HANDLE (#1) WHILE TIGHTENING SET SCREW (#1B) TO ENSURE PROPER SEATING
3. IT MAY BE NECESSARY TO REPLACE OR BACK FLUSH THE INTEGRAL SHANK FILTER CARTRIDGE AND AERATOR PERIODICALLY TO REMOVE COLLECTED SEDIMENT AND DEBRIS
 - 3.1 THE INTEGRAL SHANK FILTER (#4) MAY BE REMOVED BY USING A 1/4" ALLEN WRENCH. CLEAN OR REPLACE AS REQUIRED.

ADJUSTING THE CYCLE TIME ON ZURN METERING FAUCET

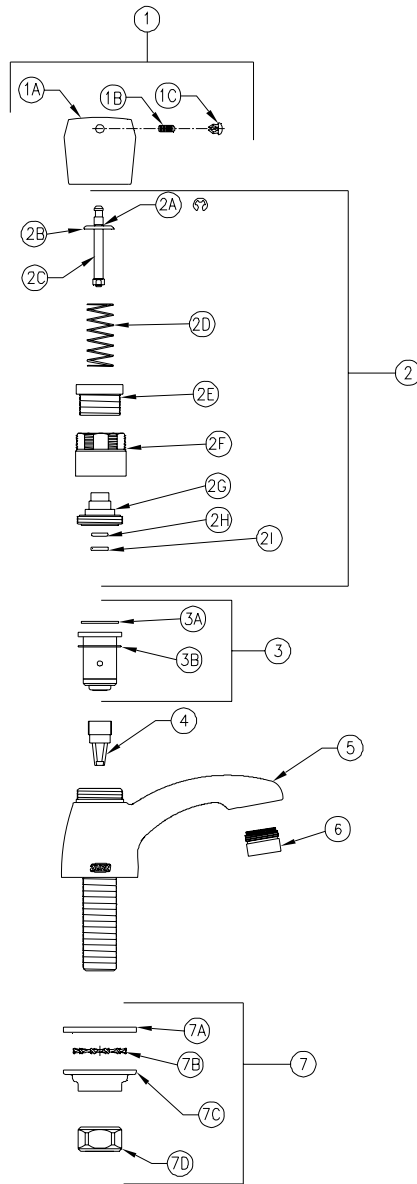
(SEE SERVICE VIDEO AT WWW.ZURN.COM/OPERATIONS/AQUASPEC/PAGES/SERVICEVIDEOMENU.ASP)

1. METERING FAUCETS ARE FACTORY PRESET FOR A 10 SEC. CYCLE AT 80 PSI.
2. ACTUATE FAUCET 3 TO 5 TIMES TO REMOVE ANY TRAPPED AIR IN THE SUPPLY LINE OR FAUCET
3. REMOVE HANDLE (#1) PER INSTRUCTIONS IN MAINTENANCE SECTION 2.1 THROUGH 2.3 TO EXPOSE ADJUSTMENT NUT (#2E)
4. INCREASE CYCLE TIME BY TIGHTENING ADJUSTMENT NUT (#2E) 1/2 TURN CLOCKWISE. DECREASE CYCLE TIME BY LOOSENING ADJUSTMENT NUT 1/2 TURN COUNTERCLOCKWISE. CHECK FOR DESIRED CYCLE TIME BY ACTUATING FAUCET WITH HANDLE (#1) IN PLACE ON STEM (#2C)

REPLACEMENT PARTS

HANDLE NUT ASSEMBLY	G60561
METERING CARTRIDGE ASSEMBLY	G61754
HANDLE ASSEMBLY	G60522
INTEGRAL SHANK FILTER ASSEMBLY	G67787

★ Installation Instructions are revised frequently.
Please access website for the latest revision.



Z86100 PICTURED

ITEM	PART#	DESCRIPTION	QTY	ITEM	PART#	DESCRIPTION	QTY
1	G60522	METERING HANDLE ASSEMBLY	1	2H	62499107	O-RING	1
1A	60601003	COLD METERING HANDLE	1	2I	60458001	O-RING RETAINER	1
1B	62705001	SET SCREW	1	3	G61754	METERING CARTRIDGE ASS'Y	1
1C	G60558	METERING INDEX BUTTONS-H,C,T	1	3A	58155020	O-RING	1
	60460001	HOT INDEX	1	3B	81241001	WASHER	1
	60460002	COLD INDEX	1	4	G67787	INTEGRAL SHANK FILTER	1
	60460003	TEMPERED INDEX	1	5	92285001	SINGLE BASIN BODY	1
2	G60561	HANDLE NUT ASSEMBLY	1	6	G63561	13/16"-27 MALE SPRAY OUTLET	1
2A	60465001	E RING	1	7	G63367	MOUNTING HARDWARE	1
2B	60450001	SPRING SEAT	2	7A	60549001	GASKET	1
2C	60451003	STEM	1	7B	61613019	LOCKWASHER	1
2D	60447001	SPRING	1	7C	59530002	MOUNTING NUT	1
2E	60446001	ADJUSTMENT NUT	1	7D	59532001	1/2" NPSM RISER NUT	1
2F	60452001	CAP	1				
2G	60456001	STEM HOUSING	1				

METERING FAUCET TROUBLE SHOOTING GUIDE

<u>PROBLEM</u>	<u>CAUSE</u>	<u>SOLUTION</u>
No water dispensing from faucet.	Supply stops not open.	Open supply stops.
	Spray outlet (item 6) contaminated.	Remove spray outlet (item 6) to clean and/or replace.
	Filter assembly (item 4) contaminated.	Shut off water supply. Remove filter assembly to clean and/or replace. Filter located internally within faucet body under metering cartridge.
Faucet is shutting off too quickly	Timing nut (item 2E) requires adjustment.	Remove handle (item 1) using 3/32" Allen wrench. Rotate timing nut (item 2E) down (CW) to lengthen handle stroke and increase cycle time.
	Metering cartridge (item 3) is damaged.	Replace metering cartridge (item 3) G61754 per Installation and Maintenance guide, page 2
Faucet is running too long or will not shut off	Timing nut (item 2E) requires adjustment.	Remove handle (item 1) using 3/32" Allen wrench. Rotate timing nut (item 2E) up (CCW) to shorten handle stroke and decrease cycle time.
	Metering cartridge (item 3) is overly contaminated or damaged.	Replace metering cartridge (item 3) G61754 per Installation and Maintenance guide, page 2
	Spray outlet (item 6) is not installed <u>or</u> incorrect spray outlet (item 6) installed.	Install 1.0 GPM or 0.5 GPM spray outlet (item 6). Faucet may not shut off with flow rate > 1.0 GPM.
	Handle nut (item 2) is not adequately tightened	Tighten handle nut (item 2) using 1-1/8" hex 6 point socket to create seal and seat metering cartridge. Do not over tighten.