

Location: _____

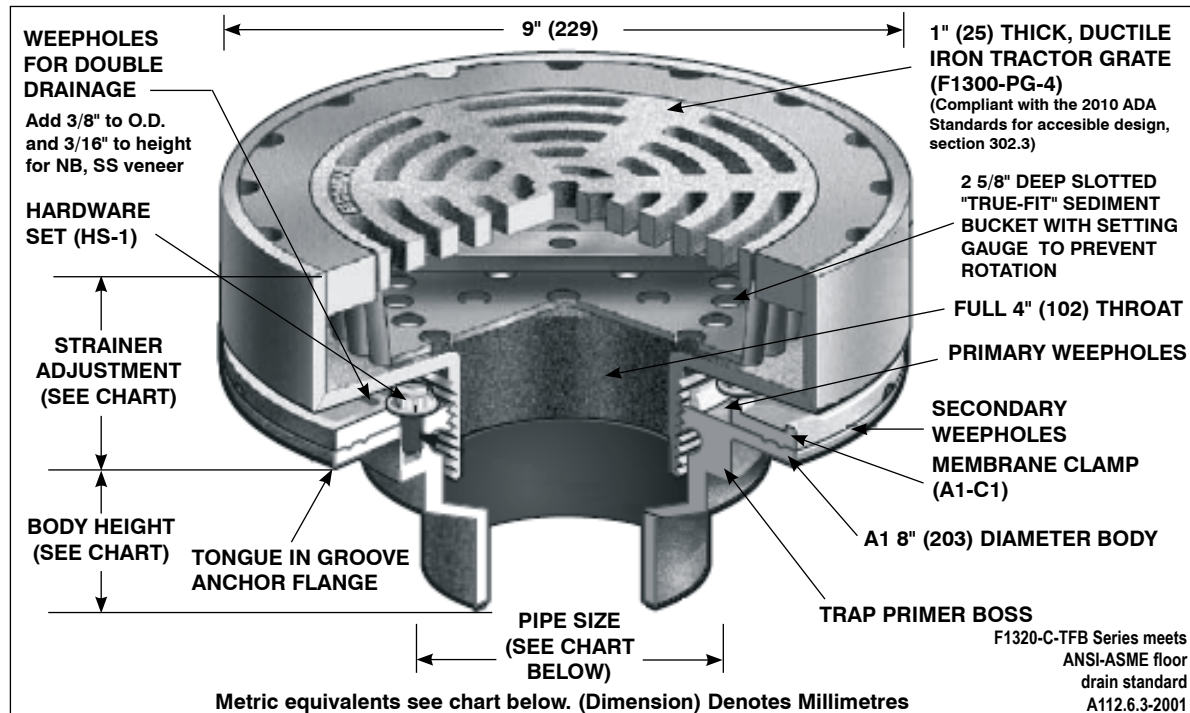


F1320-C-TFB

FLOOR DRAIN WITH 9" ROUND ADJUSTABLE TRACTOR GRATE AND "TRUE-FIT" SEDIMENT BUCKET

Specification: MIFAB Series F1320-C-TFB lacquered cast iron floor drain with anchor flange, cast iron membrane clamp with primary and secondary weepholes for waterproofing membrane, standard 1" (25) thick, 9" (235) round, (specify material finish) tractor grate, and "True-Fit" sediment bucket designed so that grate cannot be set unless the sediment bucket is in position. (For non-membrane floors, use F1320-TFB Series.)

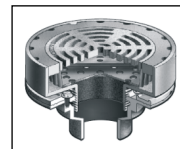
Function: Used where waste water contains solids or debris that must be intercepted to prevent drain line clogging. "True-Fit" design ensures that the sediment bucket will always be replaced after cleaning. The grate cannot be set unless the sediment bucket is in place.



PARTS:



A1 BODY



F1320-TA-(*)
(*) Denotes Strainer Finish (-1, -3 or -4)



A1-C1



HS-1

Metric equivalents see chart below. (Dimension) Denotes Millimetres

STRAINER SIZE	STRAINER ADJUSTMENT		ANSI/ASME RATING		PIPE SIZE	BODY HEIGHT				
	MIN	MAX	FREE AREA	LOAD RATING N.B. (-1) / S.S. (-3) / D.I. (-4)		NO HUB (STANDARD)	PUSH ON (P)	THREADED (T)	INSIDE CAULK (X)	PVC/ABS (-30)/(-31)
9" (229)	2" (51)	2 1/2" (64)	18 in ² (11613 ²)	ANSI/ASME LOAD CLASS "SPECIAL DUTY" (OVER 10,000 LBS.)	2" (51) 3" (76) 4" (102) 5" (127) 6" (152)	3" (76) 3" (76) 3" (76) 3" (76) 3 1/4" (83)	3 3/8" (86) 3 3/8" (86) 3 3/8" (86) -- 6 1/2" (165)	2 1/4" (57) 2 5/8" (67) 2 5/8" (67) 2 5/8" (67) --	3 3/4" (95) 3 3/4" (95) 3 3/4" (95) 3 3/4" (95) --	2 15/16" (75) 3 3/4" (95) 3 3/4" (95) -- --

SUFFIX OPTIONAL VARIATIONS

- 1 Nickel bronze strainer (veneer)
- 3 Stainless steel strainer (veneer)
- 4 Ductile iron strainer
- 6 Security screws (TR30 Torx & pin)
- 7 1/2" trap seal primer connection
- 8 Backwater valve (2", 3", 4")
- 11 Acid resistant epoxy coated body
- 12 Galvanized top assembly
- 13 Galvanized body
- 15 Extension
- 21 Secondary flat stainless steel strainer (2", 3", 4")
- 28 Stainless steel body (Type 304)
- 30 PVC socket connection body
- 31 ABS socket connection body

SUFFIX OPTIONAL VARIATIONS

- 32 2", 3", 4" integral deep seal trap
- 34 Closure plug
- 40 Underdeck clamp
- 41 Sump receiver
- 50 Lacquered cast iron funnel
- 90 Threaded side outlet (2", 3", 4") (cast iron only)
- 90NH No hub side outlet (2", 3", 4") (cast iron only)
- 95 Client logo
- ARRA ARRA (Stimulus Act) compliant product
- BA Buy American Act compliant product
- C2 High rough-in membrane clamp (min. 1 9/16" (40))

SUFFIX OPTIONAL VARIATIONS

- F4 4" Round funnel
- F6 6" Round funnel
- (Standard) No hub outlet
- G Oval 4" x 9" funnel
- HP Heel proof grate (1/4" maximum grate opening size, -3 and -4 only, veneer)
- J 6" x 3" x 1" funnel
- P Push on outlet
- PA Pennsylvania Steel Act compliant product
- T Threaded outlet (2", 3", 4", 5")
- X Inside caulk outlet
- Z Extended wide elastomeric flange

Job Name: _____
Section No: _____
Schedule No: _____

Page No: _____
Contract: _____
Purchase Order No: _____