

Location: _____

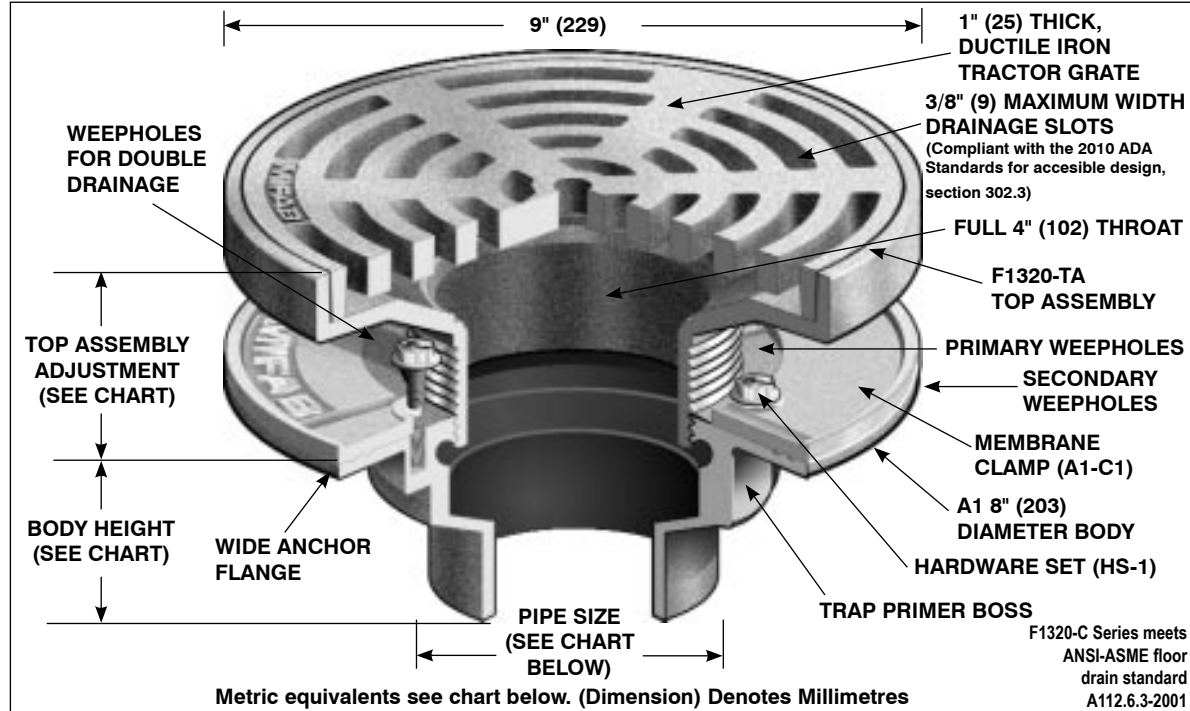


F1320-C

FLOOR DRAIN WITH 9" ROUND ADJUSTABLE TRACTOR GRATE

Specification: MIFAB Series F1320-C lacquered cast iron floor drain with anchor flange, cast iron membrane clamp with primary and secondary weepholes for waterproofing membrane, and standard 1" (25) thick, 9" (235) round, (specify material finish) tractor grate. (For non-membrane floors, use F1320 Series.)

Function: Used in warehouses, mechanical rooms, parking garages and other membrane finished areas. 9" Round, adjustable tractor grate is used with all types of poured finished floors. Membrane clamp is provided to secure the waterproofing membrane.



PARTS:



A1 BODY



F1320-TA- (*)
(*) Denotes Strainer Finish (-1, -3 or -4)



A1-C1



HS-1

Metric equivalents see chart below. (Dimension) Denotes Millimetres

STRAINER SIZE	STRAINER ADJUSTMENT		ANSI/ASME RATING		PIPE SIZE	BODY HEIGHT				
	MIN	MAX	FREE AREA	LOAD RATING N.B. (-1) / S.S. (-3) / D.I. (-4)		NO HUB (STANDARD)	PUSH ON (P)	THREADED (T)	INSIDE CAULK (X)	PVC/ABS (-30)/(-31)
9" (229)	1 5/8" (41)	2 5/8" (67)	18 in ² (11613 ²)	ANSI/ASME LOAD CLASS "SPECIAL DUTY" (OVER 10,000 LBS.)	2" (51) 3" (76) 4" (102) 5" (127) 6" (152)	3" (76) 3" (76) 3" (76) 3" (76) 3 1/4" (83)	3 3/8" (86) 3 3/8" (86) 3 3/8" (86) -- 6 1/2" (165)	2 1/4" (57) 2 5/8" (67) 2 5/8" (67) 2 5/8" (67) --	3 3/4" (95) 3 3/4" (95) 3 3/4" (95) 3 3/4" (95) --	2 15/16" (75) 3 3/4" (95) 3 3/4" (95) -- --

SUFFIX OPTIONAL VARIATIONS

- 1 Nickel bronze strainer (vener)
- 3 Stainless steel strainer (vener)
- 4 Ductile iron strainer
- 5 Sediment bucket
- 6 Security screws (TR30 Torx & pin)
- 7 1/2" trap seal primer connection
- 8 Backwater valve (2", 3", 4")
- 11 Acid resistant epoxy coated body
- 12 Galvanized top assembly
- 13 Galvanized body
- 14 Non-tilt grate
- 15 Extension
- 16 Square top
- 21 Secondary flat stainless steel strainer (2", 3", 4")
- 28 Stainless steel body (Type 304)

SUFFIX OPTIONAL VARIATIONS

- 30 PVC socket connection body
- 31 ABS socket connection body
- 32 2", 3", 4" integral deep seal trap
- 34 Closure plug
- 40 Underdeck clamp
- 41 Sump receiver
- 50 Lacquered cast iron funnel
- 90 Threaded side outlet (2", 3", 4") (cast iron only)
- 90NH No hub side outlet (2", 3", 4") (cast iron only)
- 95 Client logo
- ARRA ARRA (Stimulus Act) compliant product
- BA Buy American Act compliant product
- F4 4" Round funnel

SUFFIX OPTIONAL VARIATIONS

- C2 High rough-in membrane clamp (min. 1 9/16" (40))
- F6 6" Round funnel
- (Standard) No hub outlet
- G Oval 4" x 9" funnel
- HP Heel proof grate (1/4" maximum grate opening size, -3 and -4 only, veneer)
- J 6" x 3" x 1" funnel
- P Push on outlet
- PA Pennsylvania Steel Act compliant product
- T Threaded outlet (2", 3", 4", 5")
- X Inside caulk outlet
- Y Non-adjustable top
- Z Extended wide elastomeric flange

Job Name: _____
 Section No: _____
 Schedule No: _____

Page No: _____
 Contract: _____
 Purchase Order No: _____