

Location: \_\_\_\_\_

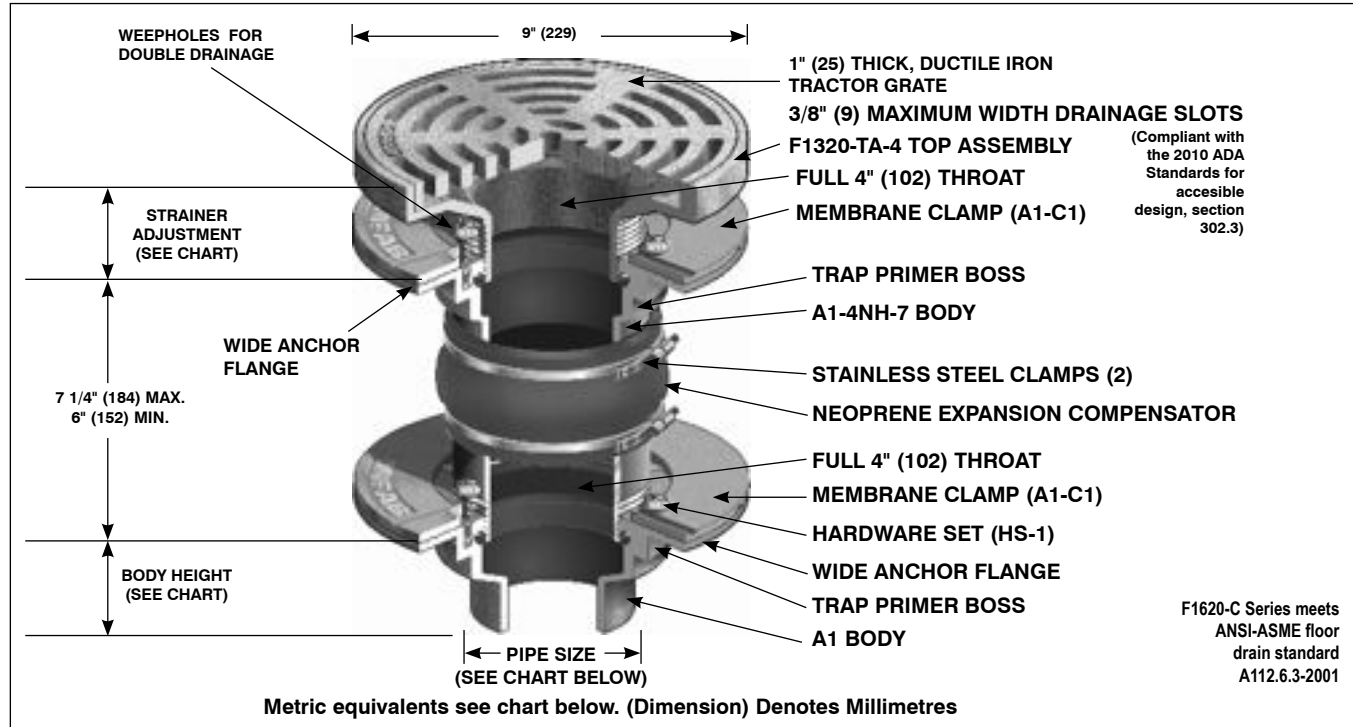


**F1620-C**

**ISOLATION FLOOR DRAIN WITH 9" ADJUSTABLE STRAINER TRACTOR GRATE**

**Specification:** MIFAB Series F1620-C lacquered cast iron floor drain with upper and lower bodies and anchor flanges, cast iron membrane clamp rings with primary and secondary weepholes for waterproofing membrane, neoprene expansion compensator, and standard 1" (25) thick, 9" (229) round, tractor grate.

**Function:** Used in computer rooms, data centers, industrial laboratories and other membrane finished areas where cables and wiring are located in the sub floor. The flexible flooring requires the drain to have a bottom outlet connected to the waste piping and a top strainer level with the finished floor. The neoprene expansion compensator that connects the two will flex with the floor. Membrane clamp is provided to secure the waterproofing membrane.



| STRAINER SIZE | STRAINER ADJUSTMENT |               | ANSI/ASME RATING                         |  | PIPE SIZE  | BODY HEIGHT   |   |  |  |   |
|---------------|---------------------|---------------|--|--|--|---|---|--|--|---|
|               | MIN                 | MAX           | FREE AREA                                | LOAD RATING<br>N.B. (-1) / S.S. (-3) / D.I. (-4)       |  | NO HUB (STANDARD)                                       | PUSH ON (P)   | THREADED (T)   | INSIDE CAULK (X)   | PVC/ABS (-30)/(-31)                                     |
| 9" (229)      | 2 13/16" (71)       | 3 11/16" (94) | 18 in <sup>2</sup> (11613 <sup>2</sup> ) | ANSI/ASME LOAD CLASS "SPECIAL DUTY" (OVER 10,000 LBS.) | 2" (51)<br>3" (76)<br>4" (102)<br>5" (127)<br>6" (152) | 3" (76)<br>3" (76)<br>3" (76)<br>3" (76)<br>3 1/4" (83) | 3 3/8" (86)<br>3 3/8" (86)<br>3 3/8" (86)<br>--<br>6 1/2" (165) | 2 1/4" (57)<br>2 5/8" (67)<br>2 5/8" (67)<br>2 5/8" (67)<br>-- | 3 3/4" (95)<br>3 3/4" (95)<br>3 3/4" (95)<br>3 3/4" (95)<br>-- | 2 15/16" (75)<br>3 3/4" (95)<br>3 3/4" (95)<br>--<br>-- |

**SUFFIX OPTIONAL VARIATIONS**

- 1 Nickel bronze strainer (vener)
- 3 Stainless steel strainer (vener)
- 4 Ductile iron grate (5" x 8" only)
- 5 Sediment bucket
- 6 Security screws (T-20 Torx & pin)
- 7 1/2" trap seal primer connection
- 8 Backwater valve (2", 3", 4")
- 11 Acid resistant epoxy coated body
- 13 Galvanized body
- 15 Extension
- 16 Square top
- 21 Secondary flat stainless steel strainer (2", 3", 4")
- 28 Stainless steel body (Type 304)

**SUFFIX OPTIONAL VARIATIONS**

- 30 PVC socket connection body
- 31 ABS socket connection body
- 32 Integral 2,3,4" Deep Seal Trap
- 34 Closure plug
- 41 Sump receiver
- 50 Lacquered cast iron funnel
- 90 Threaded side outlet (2", 3", 4") (cast iron only)
- 90NH No hub side outlet (2", 3", 4") (cast iron only)
- 95 Client logo
- ARRA ARRA (Stimulus Act) compliant product
- BA Buy American Act compliant product

**SUFFIX OPTIONAL VARIATIONS**

- C2 High rough-in membrane clamp (min. 1 9/16" (40))
- F4 4" Round funnel
- F6 6" Round funnel
- G Oval 4" x 9" funnel
- HP Heel proof grate (1/4" maximum grate opening size, -3 only)
- J 6" x 3" x 1" funnel
- (Standard) No hub outlet
- P Push on outlet
- PA Pennsylvania Steel Act compliant product
- T Threaded outlet (2", 3", 4")
- X Inside caulk outlet
- Z Extended wide elastomeric flange

Job Name: \_\_\_\_\_  
 Section No: \_\_\_\_\_  
 Schedule No: \_\_\_\_\_

Page No: \_\_\_\_\_  
 Contract: \_\_\_\_\_  
 Purchase Order No: \_\_\_\_\_