



# EZ-6

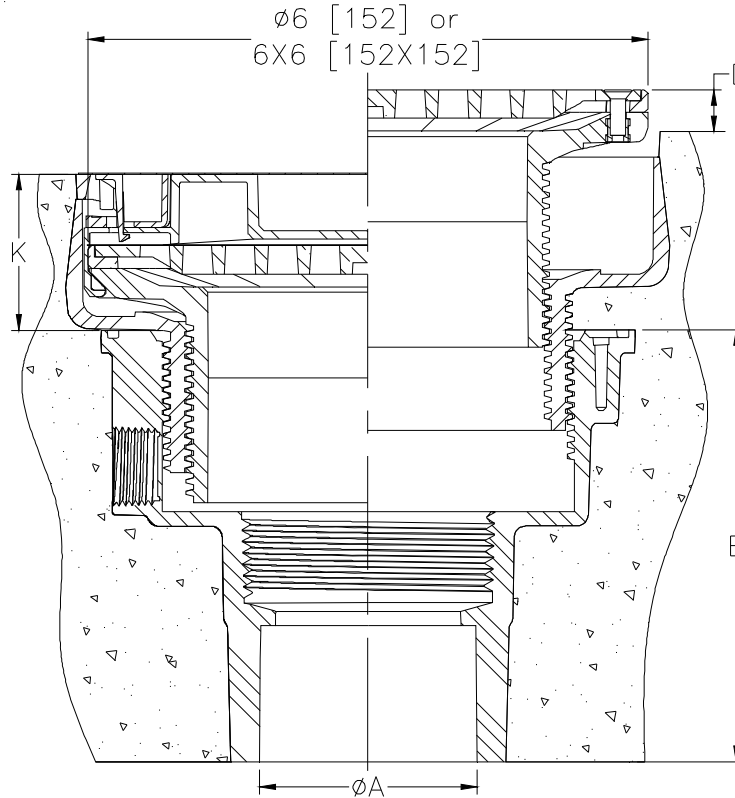
6" Top Assembly Adjustable on Grade Floor Drain with EZ1™ Technology

SPECIFICATION SHEET

TAG \_\_\_\_\_

**PATENT  
PENDING**

Dimensional Data (inches and [ mm ]) are Subject to Manufacturing Tolerances and Change Without Notice



Product Number		Dimensions in Inches [mm]						Approx. Wt. Lbs [kg]	Strainer Open Area Sq. In [cm <sup>2</sup> ]	Strainer Type
		A	E	D		K				
PVC Body	ABS Body	Pipe Size	Body Height	Min	Max	Min	Max			
EZ-PV2-R6	EZ-AB2-R6	2-3 [51-76]	4-3/4 [121]	0	13/16 [21]	1-3/4 [44]	2-13/16 [71]	4 [2]	9 [58]	Nickel Bronze Round
EZ-PV3-R6	EZ-AB3-R6	3-4 [76-102]	3-3/4 [95]	0	13/16 [21]	1-3/4 [44]	2-13/16 [71]	4 [2]	9 [58]	Nickel Bronze Round
EZ-PV4-R6	EZ-AB4-R6	4 [102]	3 -15/16 [100]	0	13/16 [21]	1-3/4 [44]	2-13/16 [71]	4 [2]	9 [58]	Nickel Bronze Round
EZ-PV2-S6	EZ-AB2-S6	2-3 [51-76]	4-3/4 [121]	0	3/4 [19]	2 [51]	3-1/32 [77]	5 [2]	13 [84]	Nickel Bronze Square
EZ-PV3-S6	EZ-AB3-S6	3-4 [76-102]	3-3/4 [95]	0	3/4 [19]	2 [51]	3-1/32 [77]	5 [2]	13 [84]	Nickel Bronze Square
EZ-PV4-S6	EZ-AB4-S6	4 [102]	3 -15/16 [100]	0	3/4 [19]	2 [51]	3-1/32 [77]	5 [2]	13 [84]	Nickel Bronze Square
EZ-PV2-R6-SS	EZ-AB2-R6-SS	2-3 [51-76]	4-3/4 [121]	0	13/16 [21]	1-3/4 [44]	2-13/16 [71]	4 [2]	9 [58]	Stainless Steel Round
EZ-PV3-R6-SS	EZ-AB3-R6-SS	3-4 [76-102]	3-3/4 [95]	0	13/16 [21]	1-3/4 [44]	2-13/16 [71]	4 [2]	9 [58]	Stainless Steel Round
EZ-PV4-R6-SS	EZ-AB4-R6-SS	4 [102]	3 -15/16 [100]	0	13/16 [21]	1-3/4 [44]	2-13/16 [71]	4 [2]	9 [58]	Stainless Steel Round
EZ-PV2-S6-SS	EZ-AB2-S6-SS	2-3 [51-76]	4-3/4 [121]	0	3/4 [19]	2 [51]	3-1/32 [77]	5 [2]	13 [84]	Stainless Steel Square
EZ-PV3-S6-SS	EZ-AB3-S6-SS	3-4 [76-102]	3-3/4 [95]	0	3/4 [19]	2 [51]	3-1/32 [77]	5 [2]	13 [84]	Stainless Steel Square
EZ-PV4-S6-SS	EZ-AB4-S6-SS	4 [102]	3 -15/16 [100]	0	3/4 [19]	2 [51]	3-1/32 [77]	5 [2]	13 [84]	Stainless Steel Square

### ENGINEERING SPECIFICATION:

Zurn EZ1™ floor and shower drain, PVC or ABS solvent weld body with bottom outlet and 1/2" [13] trap primer connection knock-out plug and top assembly. EZ1™ drainage series is engineered to simplify product installation, comprised of concrete shield, up to 13/16" [21] of vertical post pour adjustment, pre-packaged shims for tilt correction and integrated self-contained square or round light duty strainer in nickel bronze or stainless steel with rough-in cover for protection during the concrete pour.

### SUFFIXES

- \_\_\_ -EF 3/4 [19] Extension Frame
- \_\_\_ -TSP Trap Seal Protection Device (Size Matches Drain Outlet Selected) (See Z1072)
- \_\_\_ -U 2 - 3-1/4 [51-83] High Post-Pour Extension Adapter
- \_\_\_ -UP 1-3/4 [44] Pre-Pour Adjustment Extension Adapter
- \_\_\_ -VP Vandal-Proof Secured Top
- \_\_\_ -Y Sediment Bucket