

INSTALLATION ADJUSTMENT SERVICE THERMOSTATIC WATER MIXING VALVE

SERIES LV-981, LV981-LF & LV-982, LV-982-LF

IMPORTANT! Provide valve serial number, (located on valve cover) when ordering parts!!



INSTALLATION

1. Valve should be installed at a location where it can easily be cleaned, adjusted or repaired.
2. The inlets are clearly marked on the valve body. Union angle strainer checkstops furnished must be installed on both supply lines as shown above.
3. A shutoff valve must be installed on the outlet pipe. Type LV valves do not have a built-in shutoff.
4. Use solder, or thread sealant sparingly. Supply pipes should be flushed before the valve is connected. Flush outlet pipe and valve as soon as it is connected.

125 PSI (8.6 BAR) MAXIMUM OPERATING PRESSURE

CAUTION

All thermostatic water-mixing valves have limitations. They will not provide the desired accuracy outside of their flow capacity range. Consult the flow capacity chart on page 5.

Minimum flow must be no less than as shown.

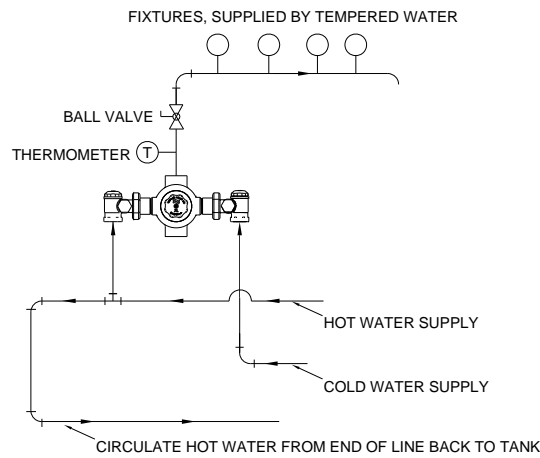
REMEMBER! THIS IS A CONTROL SYSTEM WHICH MUST BE CLEANED AND MAINTAINED ON A REGULAR BASIS (SEE MAINTENANCE GUIDE AND RECORD MGR-1000).

INSTALLATION

REQUIRED METHODS OF PIPING LV SERIES

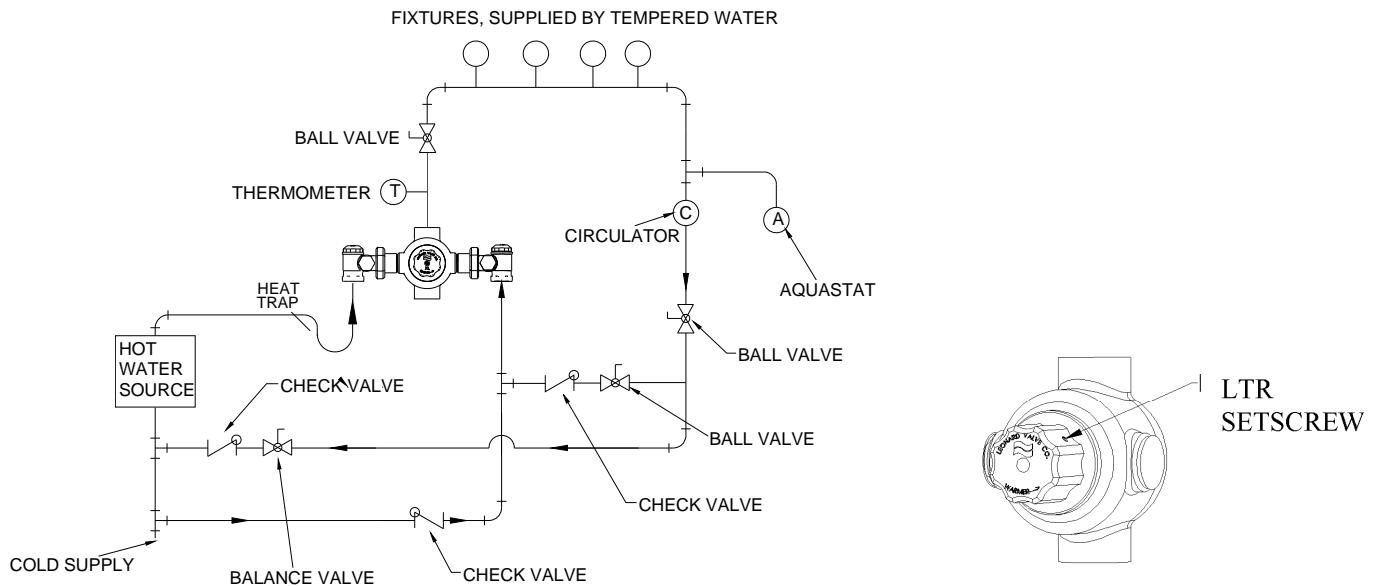
METHOD #1

Required when **TEMPERED WATER** is **NOT CIRCULATED**. Only the hot water supply to the mixing valve can be circulated with this piping arrangement.



METHOD W

Required when **TEMPERED WATER IS CIRCULATED**.



OPERATION

1. Verify that the temperature of the hot water source is properly set and maintained. Shutoff and isolate the circulator pump.
2. Loosen LTR set screw located on temperature adjustment knob with allen wrench.
3. Turn on enough fixtures to flow approximately 5 GPM, turn knob clockwise until it stops (full cold) then counterclockwise until it stops (full hot), three times to exercise the thermostatic element.
4. Set mixing valve to the desired temperature, (See warning tag for temperature set point). Tighten LTR set screw.
5. Shut off all fixtures. Setup is complete.
6. Turn on circulator. With all fixtures still off, (no water flowing) observe the circulation temperature until it stabilizes.
7. If temperature rises, close balance valve until desired temperature is reached

INSTALLATION CONTINUED

WARNING

WARNING! This Thermostatic Mixing Valve has an Locking Temperature Regulator (LTR) which must be checked. If the temperature is too high, the installer **MUST RESET** this adjustment immediately. Always check the temperature of the mixed water after installation. Excessively hot water is **DANGEROUS AND MAY CAUSE SCALDING!**

SERVICE

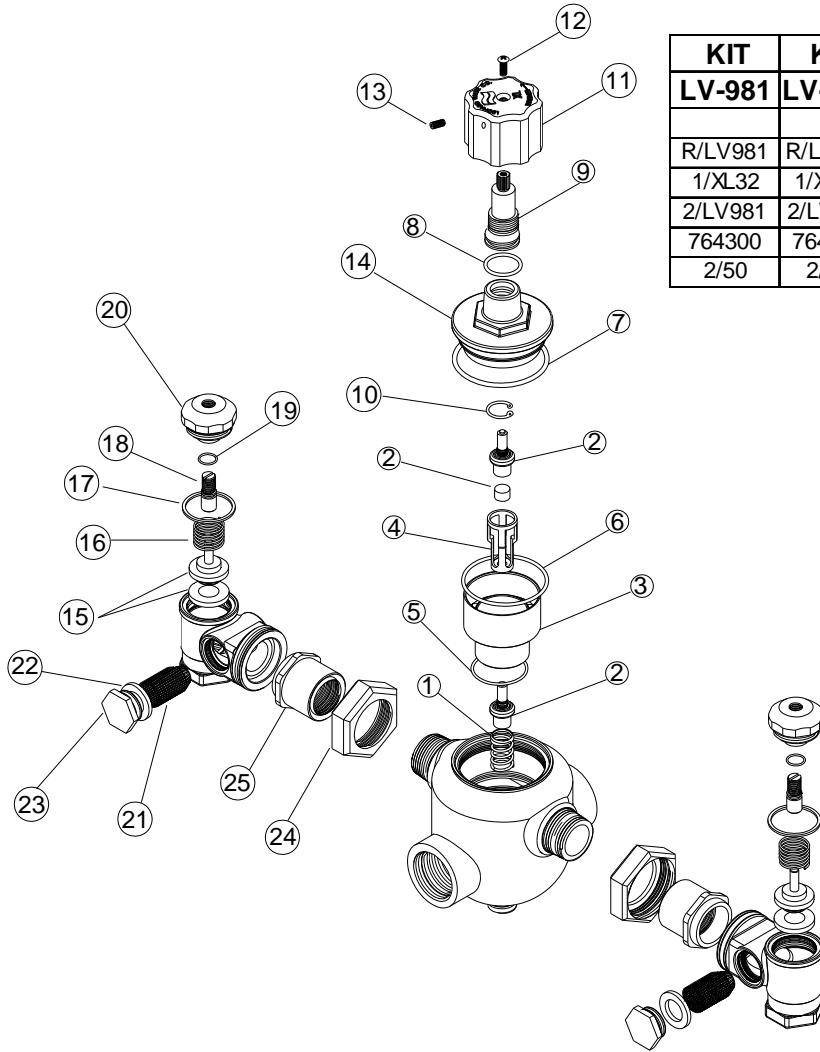
Leonard Type LV Thermostatic Water Mixing Valves are simple in design and may be easily cleaned, adjusted and repaired. If the installation is accessible, servicing may be completed without disconnecting the valve.

NOTE: Thermostatic Water Mixing Valves are REGULATING mechanisms, which must be regularly maintained to provide best performance. Frequency of cleaning depends on quality of local water conditions and usage. (See Maintenance Guide and Record MGR-1000).

TROUBLESHOOTING INSTRUCTIONS

ITEM:	PROBLEM:	RECOMMENDED REPAIR KITS: LV-981	RECOMMENDED REPAIR KITS: LV-982
PACKINGS & GASKETS	<ol style="list-style-type: none"> 1. Leak at stem. 2. Leak between valve cover and base. 	KIT 1/XL32	KIT 1/XL82
SHUTTLE ASSEMBLY	<ol style="list-style-type: none"> 3. Valve delivers either all hot or all cold water, or will not mix consistently. 	KIT R/LV981 OR 2/LV981	KIT R/LV982 OR 2/LV982
CHECKSTOPS	<ol style="list-style-type: none"> 4. Hot water bypass into cold line. 5. Supplies cannot be shut off completely. 6. Leak at checkstop bonnet. 	KIT 2/50	KIT 2/50

REMEMBER! THIS IS A CONTROL DEVICE WHICH MUST BE CLEANED AND MAINTAINED ON A REGULAR BASIS. (SEE MAINTENANCE GUIDE AND RECORD, MGR-1000).

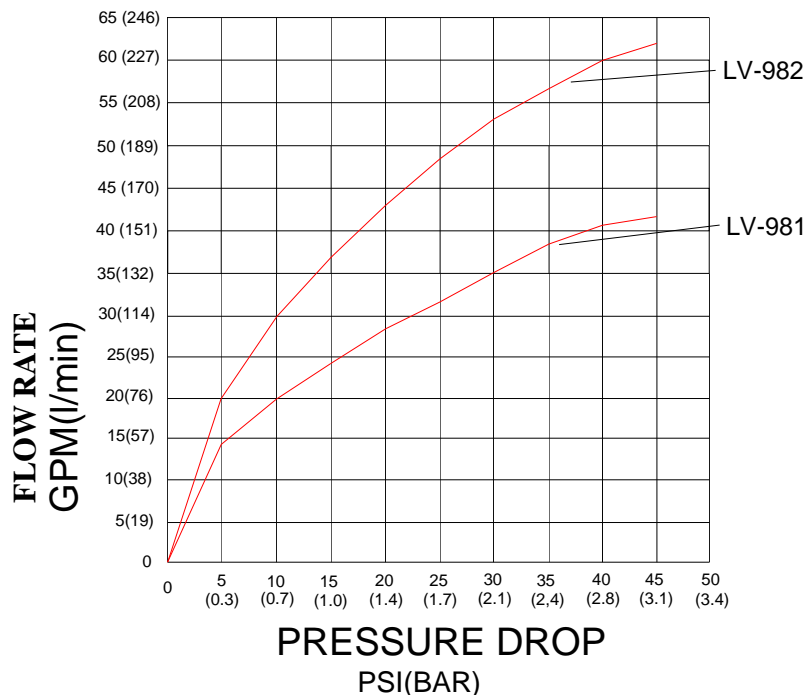


KIT	KIT	TYPE KIT	INCLUDES
LV-981	LV-982		
R/LV981	R/LV982	COMPLETE REPAIR	1,2,3,4,5,6,7,8,10
1/XL32	1/XL82	O-RING	5,6,7,8
2/LV981	2/LV982	SHUTTLE	1,2,3,4
764300	764300	KNOB	11,12,13
2/50	2/50	CHECK	15,16,17,19,21,22

ITEM #	DESCRIPTION	QTY.	PART # / KIT #	
			LV-981	LV-982
1	SPRING, RETURN	1	2/LV981, R/LV981	2/LV982, R/LV982
2	THERMOSTATIC ELEMENTS AND SPACER	1	2/LV981, R/LV981	2/LV982, R/LV982
3	SHUTTLE	1	2/LV981, R/LV981	2/LV982, R/LV982
4	ELEMENT HOLDER	1	2/LV981, R/LV981	2/LV982, R/LV982
5	O'RING, LOWER SHUTTLE	1	1/XL32, R/LV981	1/XL-82, R/LV982
6	O'RING, UPPER SHUTTLE	1	1/XL32, R/LV981	1/XL-82, R/LV982
7	O'RING, COVER	1	1/XL32, R/LV981	1/XL-82, R/LV982
8	O'RING, STEM	1	1/XL32, R/LV981	1/XL-82, R/LV982
9	STEM ASSEMBLY (DO NOT REMOVE SNAP RING)	1	741900	761900
10	RETAINING RING, COVER	1	7411, R/LV981	7611, R/LV982
11	KNOB	1	764300	764300
12	SCREW, KNOB	1	764300	764300
13	LTR SET SCREW	1	764300	764300
14	COVER	1	7405	7604
15	LOWER STEM & PACKING	2	03, KIT 2/50	03, KIT 2/50
16	SPRING,CHECK	2	011, KIT 2/50	011, KIT 2/50
17	PACKING, BONNET	2	05, KIT 2/50	05, KIT 2/50
18	STEM, UPPER CHECK	2	MU-4A	MU-4A
19	O'RING, UPPER STEM	2	MU-5A, KIT 2/50	MU-5A, KIT 2/50
20	BONNET	2	02	02
21	SCREEN	2	013, KIT 2/50	013, KIT 2/50
22	PACKING, STRAINER CAP	2	014, KIT 2/50	014, KIT 2/50
23	STRAINER CAP	2	06	06
24	SWIVEL NUT	2	09/50	09/50
25	SWIVEL	2	74-04-1	04/50

FLOW CAPACITIES

VALVE	PRESSURE DROP										
	MIN FLOW	5	10	15	20	25	30	35	40	45	PSI
		0.3	0.7	1	1.4	1.7	2.1	2.4	2.8	3.1	BAR
LV-981	2.5	14	20	24	28	32	35	38	41	43	GPM
	9	53	76	91	106	121	132	144	155	163	l/min
LV-982	3	21	31	37	43	48	53	56	60	63	GPM
	11	79	117	140	163	182	201	211	227	238	l/min



LIMITED WARRANTY

Leonard Valve Company warrants the original purchaser that products manufactured by them (not by others) will be free from defects in materials and workmanship under normal conditions of use, when properly installed and maintained in accordance with Leonard Valve Company's instructions, for a period of one year from date of shipment. During this period the Leonard Valve Company will at its option repair or replace any product, or part thereof, which shall be returned, freight prepaid, to the Leonard factory and determined by Leonard to be defective in materials or workmanship. There are no warranties, express or implied, which extend beyond the description contained herein. There are no implied warranties of merchantability or of fitness for a particular purpose. In no event will Leonard be liable for labor or incidental or consequential damages. Any alteration or improper installation or use of the product will void this limited warranty.

1360 Elmwood Avenue, Cranston, RI 02910 USA

Phone: 401.461.1200 Fax: 401.941.5310

Email: info@leonardvalve.com

Web Site: <http://www.leonardvalve.com>