



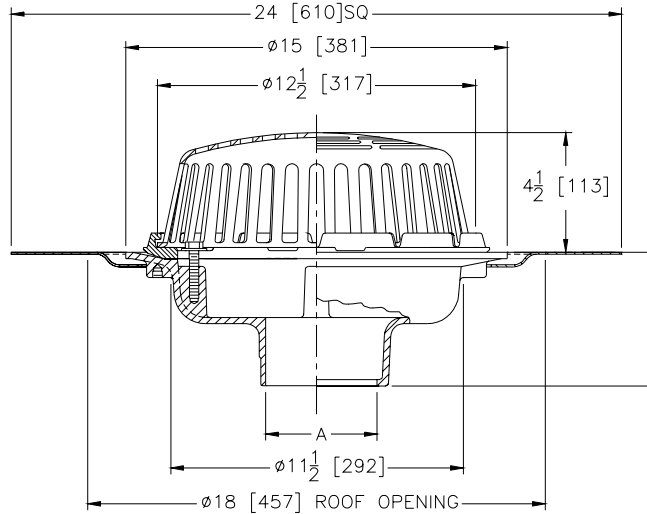
# Z-100-R

## 15" [381] DIAMETER MAIN ROOF DRAIN LOW SILHOUETTE DOME

SPECIFICATION SHEET

TAG \_\_\_\_\_

Dimensional Data (inches and [mm]) are Subject to Manufacturing Tolerances and Change Without Notice



A- Pipe Size In.	Approx. Wt. Lbs. [kg]	Dome Open Area Sq. In. [cm <sup>2</sup> ]
2-3-4 [50-75-100]	26 [12]	103 [665]
5-6 [125-150]	27 [12]	
8 [200]	28 [13]	

**ENGINEERING SPECIFICATION:** ZURN Z-100-R 15 [381] Diameter roof drain. Dura-Coated cast iron body with combination membrane flashing clamp/gravel guard and low silhouette Poly-Dome and roof sump receiver.

**OPTIONS** (Check/specify appropriate options)

**PIPE SIZE**

- 2 thru 6, 8 [50 thru 150,200]
- 2 thru 6, 8 [50 thru 150,200]
- 2 thru 6, 8 [50 thru 150,200]
- 2,3,4 [50,75,100]

(Specify size/type) **OUTLET**

- \_\_\_\_\_ IC Inside Caulk
- \_\_\_\_\_ IP Threaded
- \_\_\_\_\_ NH No-Hub
- \_\_\_\_\_ NL Neo-Loc

**E BODY HT. DIM.**

- 5 1/4 [133]
- 3 3/4 [95]
- 5 1/4 [133]
- 4 5/8 [117]

**PREFIXES**

- \_\_\_\_\_ Z- D.C.C.I. Body with Poly-Dome\*
- \_\_\_\_\_ ZA- D.C.C.I. Body with 6 3/4 [171] High Aluminum Dome
- \_\_\_\_\_ ZC- D.C.C.I. Body with Cast Iron Dome
- \_\_\_\_\_ ZRB- D.C.C.I. Body with Plain Bronze Dome

**SUFFIXES**

- |   |   |
|---|---|
| _____ -AC Angular Underdeck Clamp                                     | _____ -SC Secondary Clamping Collar   |
| _____ -AR Acid Resistant Epoxy Coated Finish                          | _____ -SS Stainless Steel Mesh Screen Over Dome   |
| _____ -AW 3/4 [19] to 4 [102] Adj. Water Level Regulator              | _____ -VP Vandal Proof Secured Top  |
| _____ -BS Bronze Mesh Screen Over Dome                                | _____ -W2 2 [51] Internal Water Dam   |
| _____ -C Underdeck Clamp  | _____ -W3 3 [76] Internal Water Dam   |
| _____ -DX Dex-o-tex Flange  | _____ -W4 4 [102] Internal Water Dam  |
| _____ -E Static Extension 1 [25] thru 4 [102] (Specify Ht.)           | _____ -XJ Vertical Expansion Joint (See Z-190)  |
| _____ -EA Adjustable Extension Assembly<br>1 3/4 [44] thru 3 1/2 [89] | _____ -6 6 3/4 [171] High Aluminum Dome<br>(148 Sq. In. [955 cm <sup>2</sup> ] Open Area) |
| _____ -ES Static Extension With Secondary Clamp                       | _____ -84 Stainless Steel Perforated Gravel Guard   |
| _____ -FG Flush Grate   | _____ -85 Stainless Steel Perforated Extension  |
| _____ -G Galvanized Cast Iron   | _____ -89 2 [51] High External Water Dam  |
| _____ -GD Galvanized Cast Iron Dome                                   | _____ -90 90° Threaded Side Outlet Body   |

**REV.      DATE: 11/29/00      C.N. NO. 86203**

**DWG. NO. 65922      PRODUCT NO. Z-100-R**

\*REGULARLY FURNISHED UNLESS OTHERWISE SPECIFIED

ZURN INDUSTRIES, INC. ♦ SPECIFICATION DRAINAGE OPERATION ♦ 1801 Pittsburgh Ave. ♦ Erie, PA 16514

Phone: 814/455-0921 ♦ Fax: 814/454-7929 ♦ World Wide Web: www.zurn.com

In Canada: ZURN INDUSTRIES LIMITED ♦ 3544 Nashua Drive ♦ Mississauga, Ontario L4V1L2 ♦ Phone: 905/405-8272 Fax: 905/405-1292