

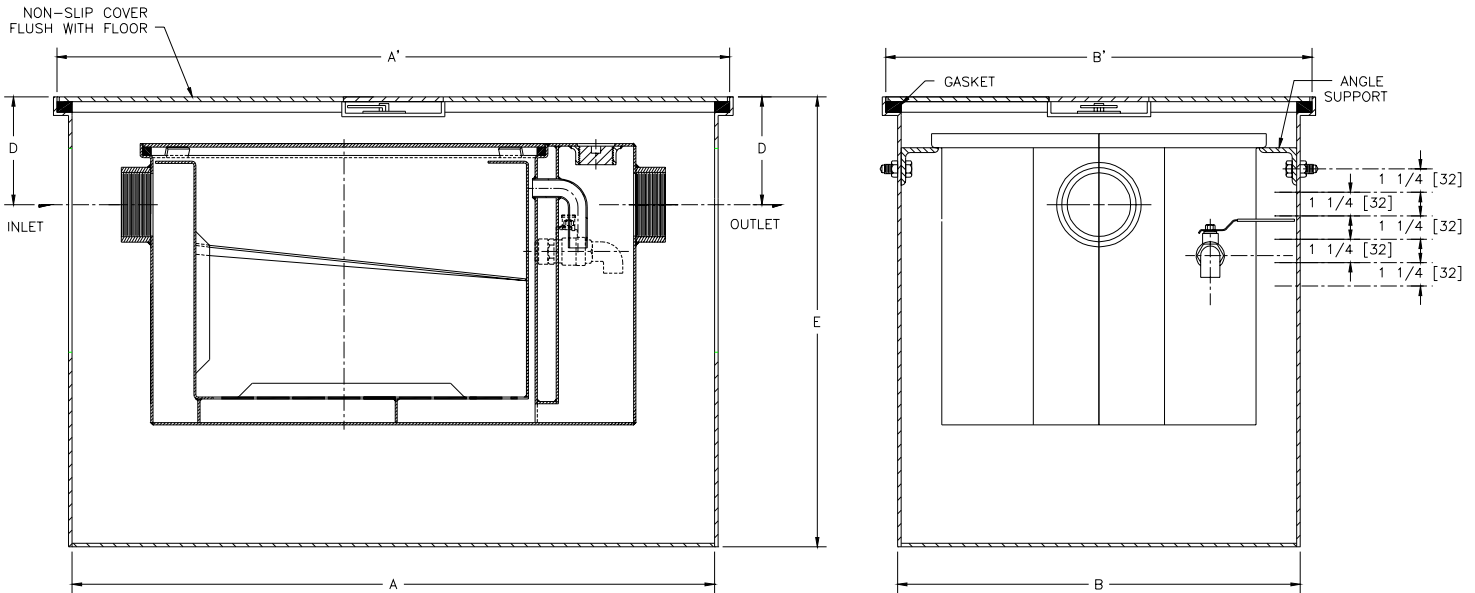


Z1173-RE
ADJUSTABLE RECESSING
RECEIVER FOR GREASEPTOR

SPECIFICATION SHEET

TAG _____

Dimensional Data (inches and [mm]) are Subject to Manufacturing Tolerances and Change Without Notice



Size	Dimensions in Inches [mm]					
	A	A'	B	B'	D	E
200	26 1/4 [667]	28 1/4 [718]	15 3/8 [391]	17 3/8 [441]	4 3/8 [111]	20 1/4 [514]
300	29 1/2 [749]	31 1/2 [800]	17 1/2 [444]	19 1/2 [495]	4 7/8 [124]	20 3/4 [527]
400	31 5/8 [803]	33 5/8 [854]	20 [508]	22 [559]	5 3/8 [136]	22 3/8 [568]
500	34 1/4 [870]	36 1/4 [921]	20 3/4 [527]	22 3/4 [578]	5 3/4 [146]	24 [610]
600	39 1/2 [1003]	41 1/2 [1054]	23 1/4 [591]	25 1/4 [641]	5 7/8 [149]	25 3/4 [654]
700	40 [1016]	42 [1067]	26 [660]	28 [711]	5 7/8 [149]	27 3/4 [705]
800	42 3/4 [1086]	44 3/4 [1137]	28 [711]	30 [762]	6 7/8 [175]	30 1/2 [775]
900	45 1/8 [1146]	47 1/8 [1197]	32 [813]	34 [864]	6 3/4 [171]	31 3/4 [806]

ENGINEERING SPECIFICATION: ZURN Z1173-RE Acid Resistant Epoxy Coated Recessing receiver, enclosed type, equipped with adjustable support brackets, and gasketed non-skid cover with recessed and covered lift handle. Complete with Z1173 Greaseptor. For greaseptor specifications see Z1173 specification sheet.

PREFIXES

_____ **Z** Acid Resistant Coated Fabricated Steel*

SUFFIXES

- _____ **-K** Anchor flange 1-3/4 [44] down from top and 2 [51] wide. A 3 [76] minimum extension height is required when anchor flange (-K) option is specified.
- _____ **-KC** Anchor flange 1-3/4 [44] down from top and 2 [51] wide with clamp collar. A 3 [76] minimum extension height is required when anchor flange (-KC) option is specified.
- _____ **-T** Cover recessed for tile/terrazzo. A 3 [76] minimum extension height is required. (Specify required recess depth - 1/8 [3], 3/4 [19], or 1-1/4 [32]).

REV. A	DATE: 9/19/03	C.N. NO. 91305
DWG. NO. 62148	PRODUCT NO. Z1173-RE	

*REGULARLY FURNISHED UNLESS OTHERWISE SPECIFIED