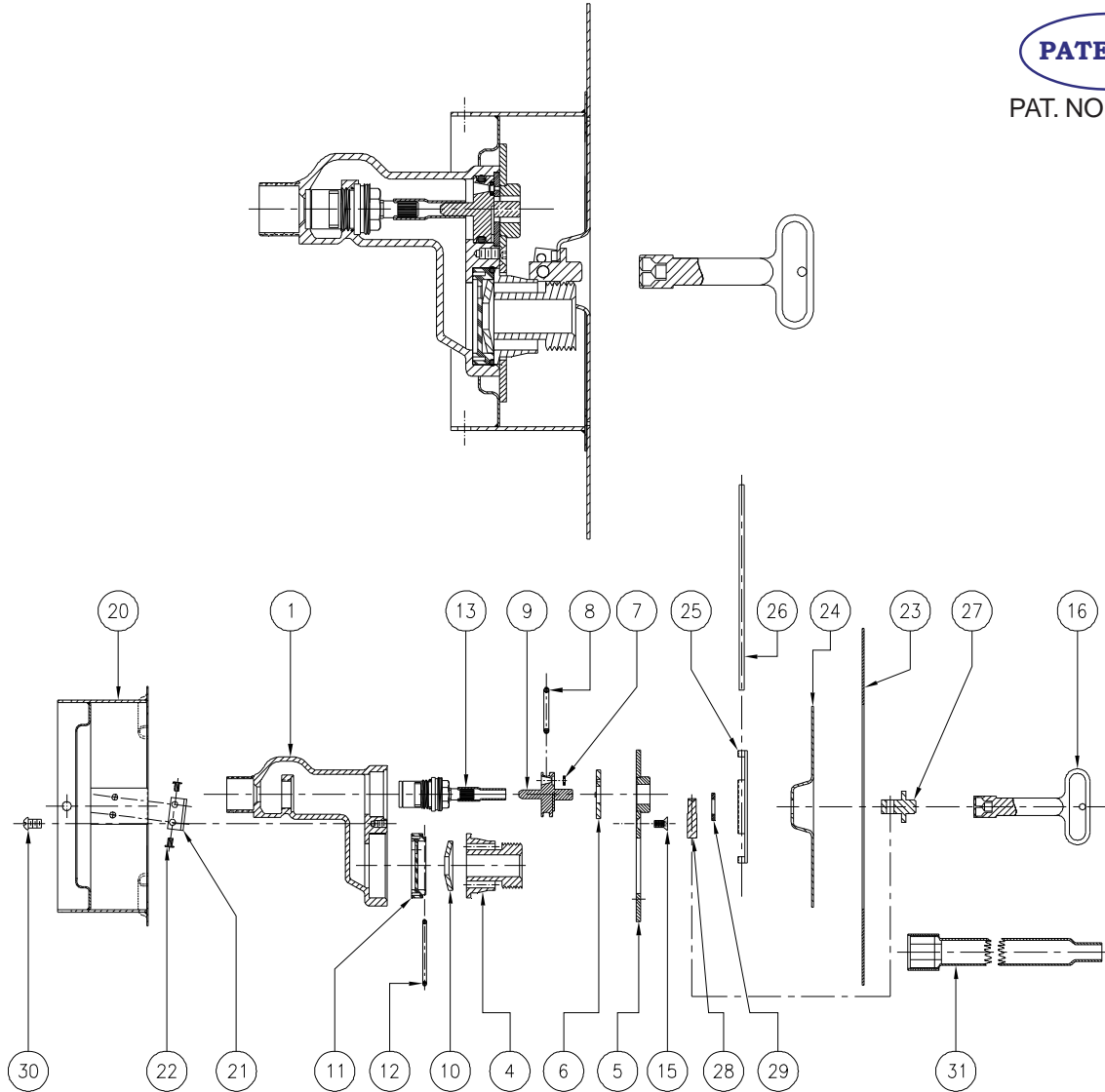




Z1332XL-EZ WALL HYDRANT ASSEMBLY

PATENTED

PAT. NO. 7,395,834



LIST OF MATERIAL

IT.	QTY	PART NO.	DESCRIPTION
1	1	60703-XL4	HEAD
4	1	50799-XL1	3/4" NOZZLE
5	1	56115-XL8	FACEPLATE
* 6	1	60228-001	RETAINING WASHER
* 7	1	23750-232	O-RING
* 8	1	23750-028	O-RING
* 9	1	60227-XL2	OPERATING COUPLING
* 10	1	50785-001	"EQUA-BALANCE" SEAL
11	1	50819-001	DISC
* 12	1	23750-204	DISC O-RING
13	1	61402-XL1	CARTRIDGE/TUBE ASSEMBLY
15	5	22698-047	FACEPLATE SCREW
* 16	1	59546-001	KEY

LIST OF MATERIAL

IT.	QTY	PART NO.	DESCRIPTION
20	1	83953-001	BODY WELDMENT
21	1	52033-002	LOCK CLIP
22	2	56201-002	LOCK CLIP RIVET
23	1	83950-001	FRAME
24	1	83949-002	HYDRANT COVER
25	1	83954-001	HINGE BRACKET
26	1	58483-001	HINGE PIN
27	1	25306-001	LOCKING PIN MOUNTING
28	1	25307-001	LOCKING PIN
29	1	61631-001	WASHER
30	2	14853-042	SCREW #10-24 N.C.
31	1	62078-001	CARTRIDGE WRENCH (OPT)

* ITEMS ARE AVAILABLE IN -RK REPAIR KIT OPTION BAG #66955-340-9.