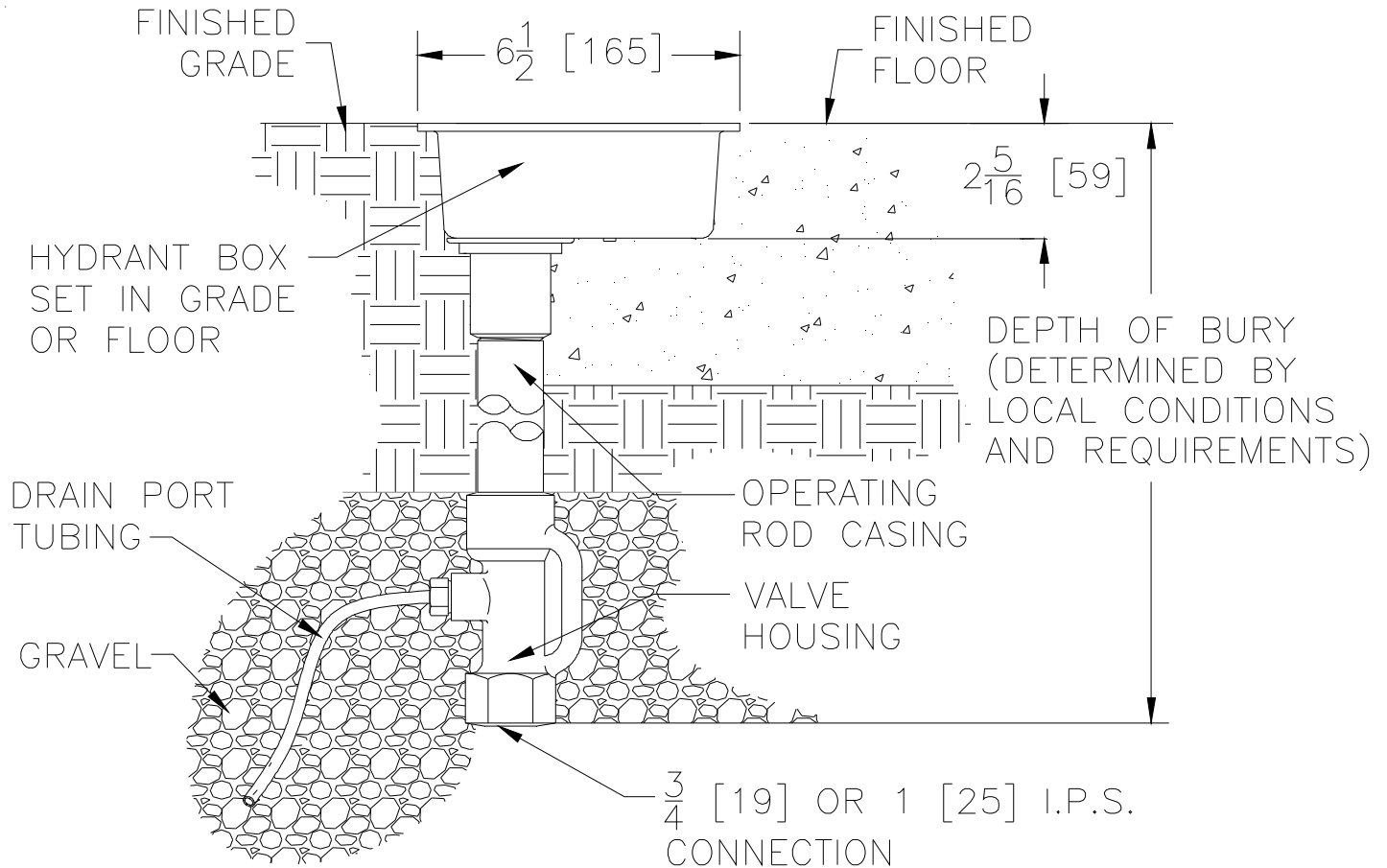




TYPICAL INSTALLATION  
**Z1360**  
ENCASED GROUND HYDRANT

Dimensional Data (inches and [ mm ]) are Subject to Manufacturing Tolerances and Change Without Notice



**Z1360**

**ENCASED GROUND HYDRANT - Non-Freeze, Flush with Surface**

Box hydrant provides free flowing water supply at any temperature in any type of commercial, recreational, industrial, or residential installation. Removable key opens surface level cover and also operates hydrant. Non-freezing, vandal proof design assures year-round convenience. Also designed with siphon-resistant drain port that is tapped 1/4 [6] IP for drain piping connection by others.

Form # H8	Date: 05/25/11	C.N. No. 121347	Rev. A
-----------	----------------	-----------------	--------