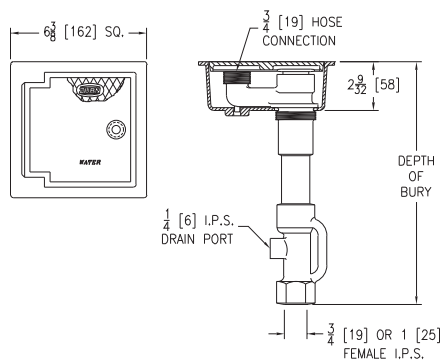


Z1360XL GROUND HYDRANT – Encased, Flush Type, Non-Freeze



ENGINEERING SPECIFICATION: ZURN Z1360XL Encased, lead-free, non-freeze ground hydrant for flush with grade or finished (non-traffic) floor installation. Hydrant features galvanized steel casing, bronze and stainless steel interior components, bronze seat and replaceable seat washer, non-turning operating rod and, freefloating compression closure valve with 3/4" [19] or 1" [25] inlet connection with 1/4" [6] tapped drainage port on housing, and 3/4" [19] or 1" [25] male hose connection. Hydrant furnished with plain bronze box and locking hinged, scoriated cover stamped "WATER" and includes operating key.

Zurn "XL" Lead-Free compliant products are a line of durable plumbing products designed and manufactured to comply with state laws and local codes that mandate maximum allowable lead content levels. Zurn "XL" products are manufactured in accordance to the Federal SWDA section 1417.

Depth of Bury Feet [mm]	2' [610]	3' [914]	4' [1219]	5' [1524]	6' [1829]	7' [2134]	8' [2438]	9' [2743]	10' [3048]
Approx. Weight Lbs. [Kg]	17 [8]	21 [10]	25 [11]	33 [15]	39 [18]	43 [20]	47 [21]	52 [24]	56 [25]

Z1360XL Wall Hydrant

The Z1360XL is an encased, non-freeze ground hydrant designed to be installed flush with grade or finished floor. This hydrant is ideal for golf courses, parks and recreational areas, lawn and garden care and other landscape needs.

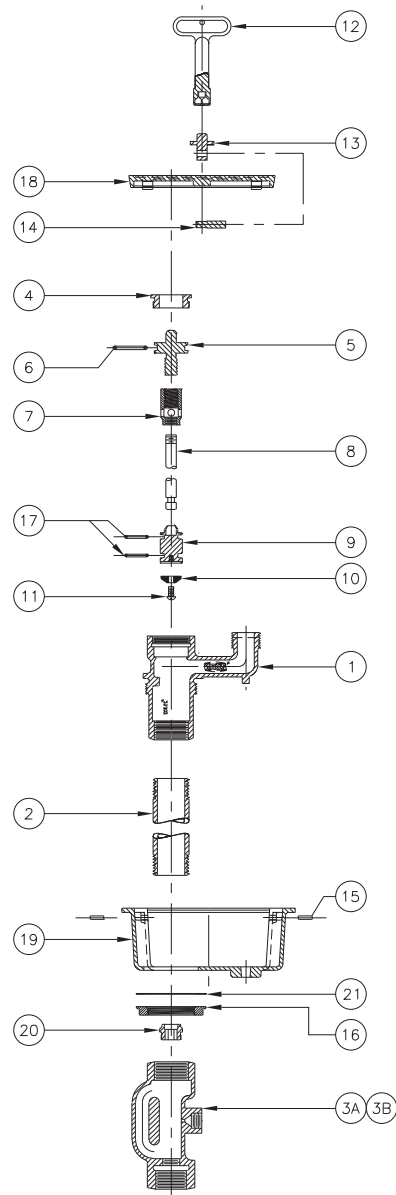
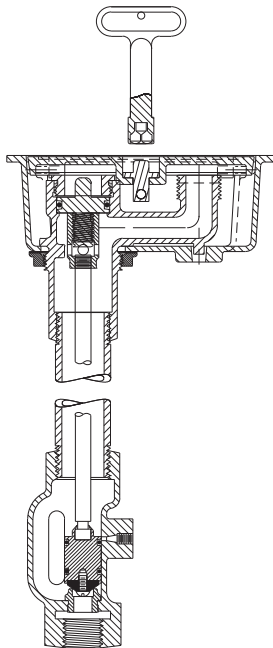
Hydrant Features

- **Certification** – City of L.A. listed.
- **Valve Seat** – Removable bronze valve seat with circular seating surface.
- **Valve** – One-piece assembly, replaceable, free-floating compression closure valve plunger with double O-ring seal operates the water flow and drainage with a maximum of two and one-quarter (2-1/4) turns.
- **Casing** – Threaded brass pipe nipple.
- **Operating Screw** – Brass operating screw secured with brass face nut.
- **Operating Rod** – 3/8" [10 mm] solid brass.
- **Box and Cover** – Plain bronze box and hinged, scoriated cover with "water" stamping.
- **Drainage** – Tapped, siphon-resistant drain port located in valve housing prevents sub-surface water contamination from entering the hydrant. **Important: Hydrant must be opened one complete turn to seal drain port during use.**
- **Depth of Bury** – Available from two (2) feet [610 mm] to ten (10) feet [3048 mm] in one (1)-foot [30 m] increments.
- **Operating Pressures** – Minimum running pressure 8 psi. Maximum static pressure 125 psi.
- **Water Temperature Range** – Minimum 33°F. Maximum 130°F.

OPTIONS**SUFFIXES**

- CI D.C.C.I. Box and Cover
- DP12 1/2" [13 mm] IP Drain Port in Box
- DP14 1/4" [6 mm] IP Drain Port in Box
- DP38 3/8" [10 mm] IP Drain Port in Box
- HD Heavy-Duty Cover (-CI and -NB only)
- K Flashing Flange Only
- KC Flashing Flange with Clamp Collar
- NB Polished Nickel Bronze Face
- PB Polished Bronze Face
- RK Hydrant Parts Repair Kit
- VB 3/4" [19 mm] Adapter Vacuum Breaker
(Needs deeper box to accommodate vacuum breaker.)

Z1360XL GROUND HYDRANT Parts Assembly, Parts List, and Operating Rod Assemblies



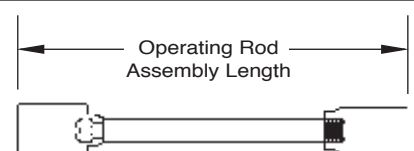
Z1360XL Parts List

Item	Description	Qty.	Part No.
1	Head (3/4" Hose Conn.)	1	25302-XL1
2	Casing	1	50270-XXX
3A	Valve Housing - 3/4" Female NPT Inlet	1	25324-XL3
3B	Valve Housing - 1" Female NPT Inlet	1	25324-XL4
4	Face Nut	1	22156-002
*5	Operating Screw	1	25049-XL1
*6	O-Ring	1	23750-028
*7	Operating Coupling	1	25147-XL1
8	Operating Rod	1	25328-XLX
9	Washer Guide	1	25323-XL1
*10	Washer	1	23075-001
*11	Screw #10-24 N.C.	1	14853-042
*12	Key	1	59546-001
13	Locking Pin Mounting	1	25306-001
14	Locking Pin	1	25307-001
15	Hinge Pin	2	45553-011
16	Locknut	1	25242-001
17	O-Ring	2	23750-036
18	Hydrant Cover	1	57423-001
19	Hydrant Body	1	25301-001
*20	Removable Seat	1	25262-XL1
21	Gasket	1	21425-060

*Items are available in -RK Repair Kit Option Bag (#66955-345-9).

Operating Rod Assemblies

2' Bury	20'-9/16"
3' Bury	32'-9/16"
4' Bury	44'-9/16"
5' Bury	56'-9/16"
6' Bury	68'-9/16"
7' Bury	80'-9/16"
8' Bury	92'-9/16"
9' Bury	104'-9/16"
10' Bury	116'-9/16"



Z1360XL GROUND HYDRANT Troubleshooting Guide**Z1360XL Troubleshooting Guide**

PROBLEM	CAUSE	SOLUTION
Hydrant will not operate when turned on.	Water supply is shut off.	Turn on water supply.
Cannot turn the hydrant on with key.	Hydrant hasn't been used for a long time – O-Ring has adhered to the operating screw and head.	Follow steps 1-2, 4, and 7-8 of the Service Guide.
Water does not shut off completely when hydrant is turned off.	Debris between seat and washer.	Follow steps 1-3 and 6-8 of the Service Guide. Clean by turning water supply on and flush hydrant.
	Washer is worn out.	Follow steps 1-3 and 5-8 of the Service Guide.
	Wire draw in seat.	Replace seat.
Water is flowing out of the hydrant drainage port when the hydrant is turned on.	Washer guide O-Rings are broken or missing.	Follow steps 1-3 and 5-8 of the Service Guide.
Hydrant exhibits low flow.	Water supply to hydrant is restricted.	Check water supply to ensure that all upstream valves are fully open.

and 3/4" [19] male hose connection. Hydrant furnished with type 304 stainless steel faceplate and

Z1360XL GROUND HYDRANT Service Guide

Step 1: Shutting Off the Water Supply to the Hydrant

Locate the supply shut-off valve and rotate until water supply is off.

Step 2: Removing the Face Nut and Adjacent Components

Using crescent wrench or 1-1/2 inch open-end wrench, remove the face nut (4) from head (1) by turning counterclockwise.

Step 3: Removing the Internal Operating Assembly

The internal operating assembly (5-11 and 17) can be removed by gripping the square end of the operating screw (5) with a pair of pliers and pulling straight out.

If the operating screw O-Ring was not the reason for service – skip to step 5.

Step 4: Replacing the Operating Screw O-Ring

Remove the operating screw (5) from operating coupling (7) by turning clockwise and slip the old O-Ring (6) off, and replace with new O-Ring (6). Reinstall operating screw (5) into operating coupling (7) by turning counterclockwise. **(Note:** Lubricate the operating screw (5) threads and the O-Ring (6) with Lubriplate FGL-2 if needed.)

If the hydrant shutoff washer and washer guide O-Rings were not the reason for service – skip to step 8.

Step 5: Replacing the Hydrant Shutoff Washer and Washer Guide O-Rings

Remove #10-24 NC x 3/8 screw (11) using a flat screwdriver and turning screw (11) counterclockwise, remove washer (10) and replace with new washer (10) and new screw (11) turning screw clockwise until tight. Remove old O-Rings (17) and replace with new O-Rings (17). **(Note:** Lubricate the O-Rings (17) with Lubriplate FGL-2 if needed.)

Step 6: Replacing the Internal Operating Assembly

There is a flat or a V-notched boss inside of the hydrant head (1) that keeps the operating coupling (7) from rotating when hydrant is turned on and off. With operating screw (5) turned counterclockwise into operating coupling (7) until it stops, and making sure that a flat side or corner of operating coupling (7) lines up with appropriate boss, reinsert the internal operating assembly into the hydrant.

Step 7: Replacing the Face Nut

Insert face nut (4) into head (1), and rotate clockwise until hand tight, then using a crescent wrench or 1-1/2 inch open end wrench, snug nut (4) tight.

Step 8: Turning On the Water Supply

Locate the water supply shut-off valve and rotate until water supply is on.