



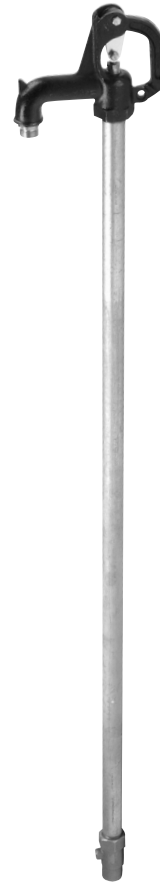
Z1396 Trouble-shooting Guide

PROBLEM	CAUSE	SOLUTION
Hydrant will not operate when turned on	Water supply is shut off	Turn on water supply
Water is leaking around the operating rod and packing nut	Operating rod has worn the packing	Tighten the packing nut slowly until the leak stops
	The packing nut cannot be tightened any more	Follow steps 1-10 of the Service Guide
Water does not shut completely off when hydrant is turned off	Debris between seat and washer	Follow steps 1, 11 and 13 of the Service Guide. Clean by turning water supply on and flush hydrant
	Washer is worn out	Follow steps 1 and 11-13 of the Service Guide
Hydrant exhibits low flow	Water supply to hydrant is restricted	Check water supply to ensure that all upstream valves are fully open

Z1396 Yard Hydrant

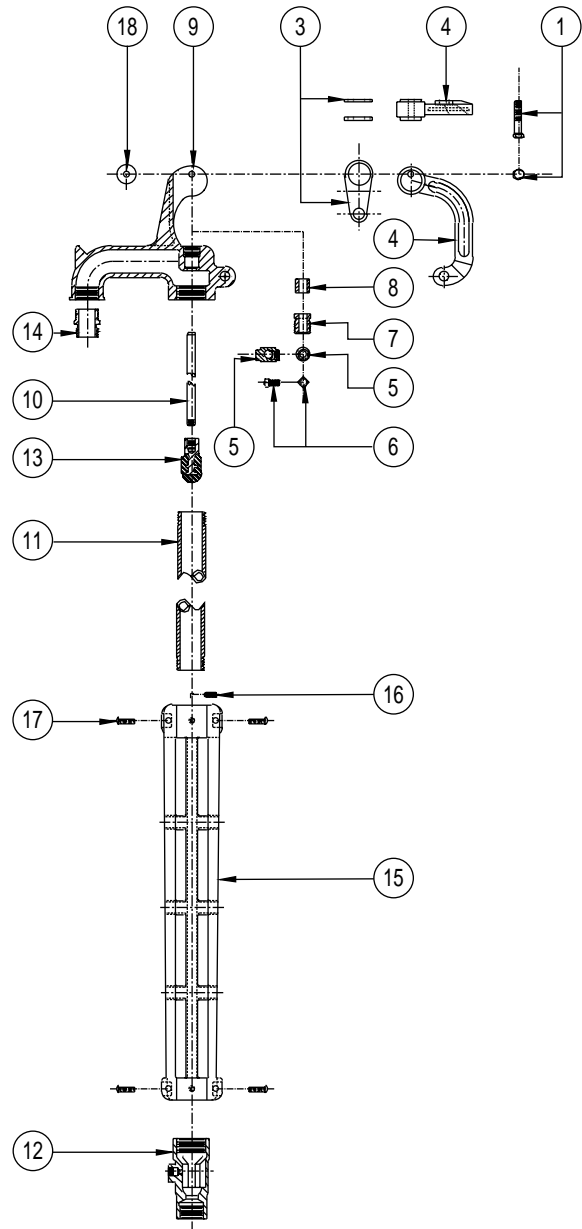
Exposed Head • Non-Freeze

Maintenance and Service Instructions



The Zurn Hydrant has been engineered to provide reliable performance year after year. However, if servicing is required, it is recommended that you consult the trouble-shooting guide at the left. The trouble-shooting guide was developed to reduce maintenance time by providing the user with appropriate service instructions.

- Step 1: Shutting Off The Water Supply To The Hydrant**
Locate the supply shut off valve and rotate until water supply is shut off. If the packing was not the reason for service - skip to step 11.
- Step 2: Removing the Handle and Adjacent Components**
Lift the handle (4) just enough to relieve the tension and using a punch and hammer, punch the handle cap screw (1) through the push nut (18) and remove the handle cap screw (1) from the head (9). Rotate the handle downward and remove the loose linkage (3) piece and the handle (4).
- Step 3: Removing the Pivot Linkage and Pivot Link**
Mark the operating rod (10) at the top of the pivot link (5) for locating the pivot link (5) when reinstalling. Using a 3/8 open end wrench or crescent wrench and turning the set screw (6) counter clockwise, remove the set screw (6) and the pivot linkage (3) piece from the pivot link (5). Lift the pivot link (5) off the operating rod (10).
- Step 4: Removing the Packing Nut**
Using a 3/4 open end wrench or crescent wrench, turn the packing nut (7) counter clockwise until packing nut (7) is free from head (9). Lifting upward, remove from operating rod (10).
- Step 5: Removing the Head**
Using a magic marker, mark a vertical line on the hex portion of the head (9) and casing (11) as a guide when reinstalling the head (9). Using a pipe wrench and a large crescent wrench and turning the head (9) counter clockwise, remove the head (9) from the galvanized casing (11). Lift upward to remove the head (9) from operating rod (10).
- Step 6: Replacing the Graphite Fiber Packing**
Turn head (9) upside down and remove the packing (8). Use a flat punch and hammer and lightly tap packing (8) out of head (9). Turn the head (9) upright, and inserting new packing (8), lightly tap into place in head (9) without damaging the packing (8).
- Step 7: Replacing the Packing Nut**
By hand, screw the packing nut (7) into the head (9) finger tight only.
- Step 8: Replacing the Head**
Carefully slide the head (9) over the operating rod (10) up through the graphite fiber packing (8) and the packing nut (7). With pipe wrench and large crescent wrench, and turning clockwise, screw the head (9) tight until the lines on the casing (11) and the hex portion of the head (9) line up as before removing.
- Step 9: Replacing the Pivot Link and Adjacent Linkage**
Slide the pivot link (5) on to the operating rod (10) to the locating mark on the operating rod (10). Place one linkage (3) piece on to the side of the pivot link where the set screw (6) goes, and using a 3/8" open end wrench or crescent wrench, turn the set screw (6) clockwise until tight.
- Step 10: Replacing the Handle and Adjacent Components**
Place the handle (4) on the linkage (3) piece that is attached to the pivot link (5), then place the other linkage (3) piece on the handle (4) and on the pivot link (5), rotating upward into the head (9). Slide the handle cap screw (1) through the head (9) linkage (3) handle (4) linkage (3) head (9) and push on the push nut (18) until it touches the head (9).
- Step 11: Removing Head Assembly and Operating Rod/Plunger Assembly**
With a magic marker, mark a vertical line on the hex portion of the head (9) and the galvanized casing (11) as a guide when reinstalling the head (9). Lift the handle (4) all the way upward, and using a pipe wrench and large crescent wrench, turn the head (9) counter clockwise, unscrew the head (9) from the galvanized casing (11), and lift head (9) upward removing the operating rod (10) and plunger assembly (13) from galvanized casing (11).
- Step 12: Replacing the Plunger Assembly**
Turn the plunger assembly (13) counter clockwise and remove it from the operating rod (10). Place new plunger assembly (13) on operating rod (10), turn it clockwise and tighten.
- Step 13: Replacing Head Assembly and Operating Rod/Plunger Assembly**
Insert the plunger assembly (13) / operating rod (10) into the galvanized casing (11) until the head assembly (9) contacts the galvanized casing (11). Then using a pipe wrench and large crescent wrench and turning the head (9) clockwise, screw the head (9) tight until the lines on the galvanized casing (11) and the hex portion of the head (9) line up as before removing.



ZURN PLUMBING PRODUCTS GROUP
1801 PITTSBURGH AVENUE
ERIE, PA 16502
PHONE: 814/455-0921
FAX: 814/875-1402
WEBSITE: www.zurn.com