

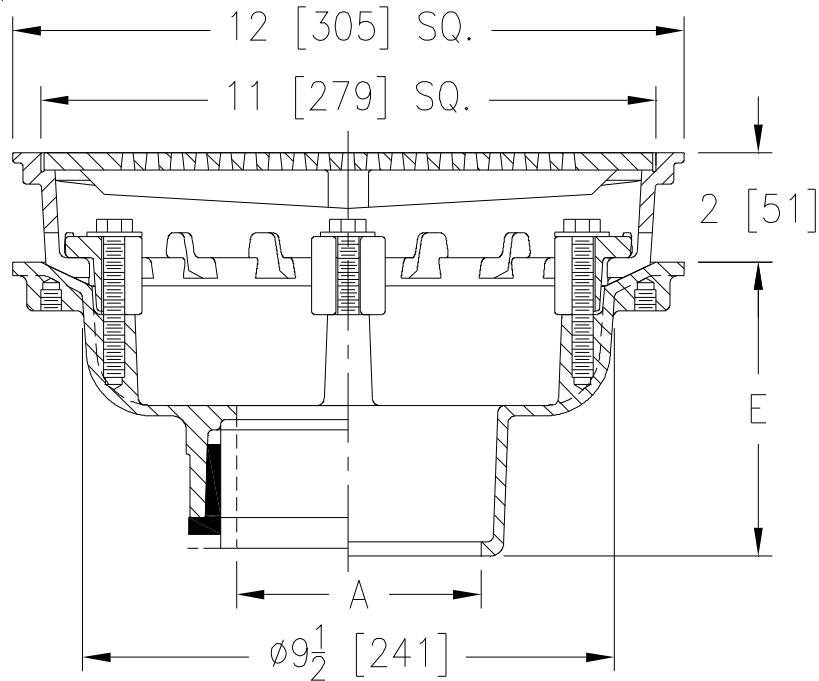


Z154
12 [305] SQUARE TOP PROM-DECK DRAIN
W/ HEEL-PROOF GRATE & ROTATABLE FRAME

SPECIFICATION SHEET

TAG _____

Dimensional Data (inches and [mm]) are Subject to Manufacturing Tolerances and Changes Without Notice



A Pipe Size In.	Approx. Wt. Lbs. [kg]	Grate Open Area Sq. In. [cm ²]
2 thru 6 [51 thru 152]	29 [13]	34 [219]

ENGINEERING SPECIFICATION: ZURN Z154

12 [305] Square Top Prom-Deck drain, Dura-Coated cast iron body with rotatable light duty square promenade frame with seepage openings, frame clamps and light duty heel-proof grate.

OPTIONS (Check/specify appropriate options)

PIPE SIZE

- 2 thru 6 [51 thru 152]
- 2 thru 6 [51 thru 152]
- 2 thru 6 [51 thru 152]
- 2 thru 4 [51 thru 102]

(Specify size/type) **OUTLET**

- ___ IC Inside Caulk
- ___ IP Threaded
- ___ NH No-Hub
- ___ NL Neo-Loc

'E' BODY HT. DIM.

- 5-1/4 [133]
- 3-3/4 [95]
- 5-1/4 [133]
- 4-9/16 [117]

PREFIXES

- ___ Z D.C.C.I. Body with Top*
- ___ ZB D.C.C.I. Body with Polished Bronze Top (Add 3/16 [5] to 2 [51] Dim & 5/8 [16] to 12 [305] Dim.)
- ___ ZN D.C.C.I. Body with Polished Nickel Bronze Top (Add 3/16 [5] to 2 [51] Dim & 5/8 [16] to 12 [305] Dim.)

SUFFIXES

- | | |
|--|---|
| <ul style="list-style-type: none"> ___ -AR Acid Resistant Epoxy Coated ___ -C Underdeck Clamp ___ -DG Duresist Grate (Z Only) ___ -DP Top-Set® Roof Deck Plate
(Replaces Both the -C and -R) ___ -DT Decorative Polished Top (ZB and ZN Only) ___ -E 2 [51] High Static Extension ___ -EB Top-Set® Adjustable Extension Assembly ___ -G Galvanized Cast Iron ___ -R Roof Sump Receiver ___ -S Secondary Strainer ___ -SC Secondary Clamp Collar | <ul style="list-style-type: none"> ___ -TC Neo-Loc Test Cap Gasket
(2 [51] - 4 [102] NL Bottom Outlet Only) ___ -TS Top Secured with Slotted Screws ___ -VP Vandal-Proof Secured Top ___ -XJ Vertical Expansion Joint (See Z190) ___ -Y Sediment Bucket ___ -85 Stainless Steel Perforated Extension ___ -90 90° Threaded Side Outlet Body
(2 [51] thru 4 [102]) |
|--|---|

REV. H	DATE: 10/21/10	C.N. NO. 111903
DWG. NO. 82466 PRODUCT NO. Z154		

*REGULARLY FURNISHED UNLESS OTHERWISE SPECIFIED