

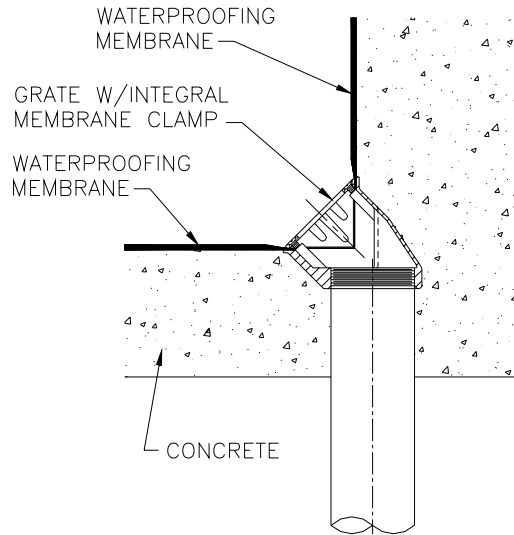


# TYPICAL INSTALLATION

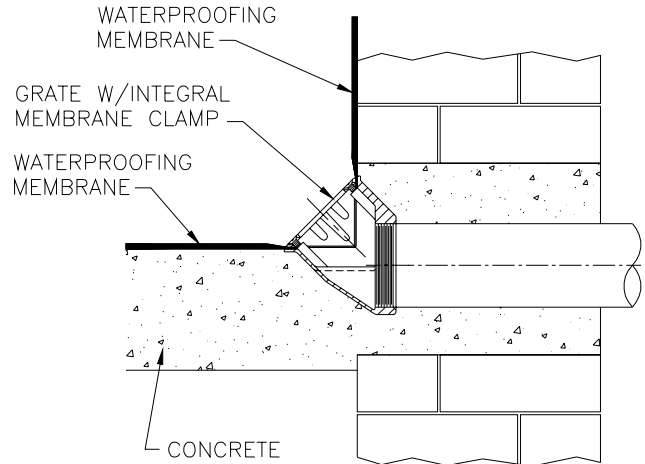
## Z161

### SCUPPER DRAIN

Dimensional Data (inches and [ mm ]) are Subject to Manufacturing Tolerances and Change Without Notice



VERTICAL  
INSTALLATION



HORIZONTAL  
INSTALLATION

## Z161 SCUPPER DRAIN

Drain is illustrated with regularly furnished grate with integral membrane clamp. The Zurn scupper drain can be installed in most roof construction. Dimensional data is shown in the Engineering Handbook and on the Zurn submittal drawings. The drain body is secured to the pipe by a threaded connection. The waterproofing membrane is to run up to and over the clamping flange area. The clamping collar is then placed on the drain and then secured. The design and method used for the installation of roofing materials is by others. For other available scupper drains, see Z160, Z187 & Z189.

Form # RD52

Date: 3/18/04

C.N. No. 92039

Rev.

ZURN INDUSTRIES, INC. ♦ SPECIFICATION DRAINAGE OPERATION ♦ 1801 Pittsburgh Ave. ♦ Erie, PA 16514

Phone: 814/455-0921 ♦ Fax: 814/454-7929 ♦ World Wide Web: [www.zurn.com](http://www.zurn.com)

In Canada: ZURN INDUSTRIES LIMITED ♦ 3544 Nashua Drive ♦ Mississauga, Ontario L4V1L2 ♦ Phone: 905/405-8272 Fax: 905/405-1292