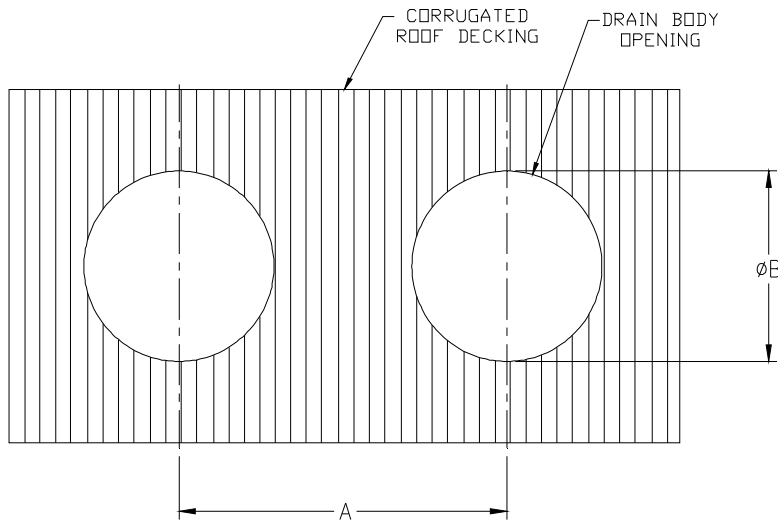
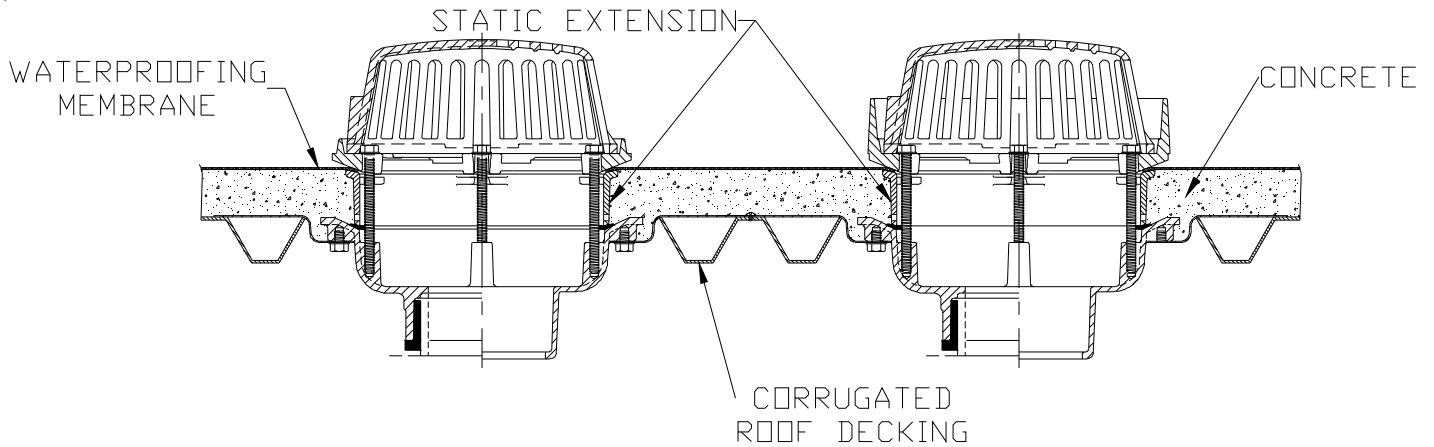




# TYPICAL INSTALLATION FOR Z163, Z164, Z165 W/ STATIC EXTENSION COMBINATION MAIN ROOF AND OVERFLOW DRAIN

Dimensional Data (inches and [ mm ]) are Subject to Manufacturing Tolerances and Change Without Notice



	A	ØB
Z163	24 [610]	16-1/2 [419]
Z164	20 [508]	13-1/2 [343]
Z165	16 [406]	10 [254]

## Z163, Z164, Z165 WITH STATIC EXTENSION COMBINATION MAIN ROOF AND OVERFLOW DRAINS

Drain installed in a typical corrugated roof decking application with static extension. All four sides and middle of deck plate must be supported adequately, subject to the approval of the project's structural engineer.

Form # RD106

Date: 02/18/14

C.N. No. 130600

Rev. -

ZURN INDUSTRIES, LLC. ♦ SPECIFICATION DRAINAGE OPERATION ♦ 1801 Pittsburgh Ave. ♦ Erie, PA 16514

Phone: 814/455-0921 ♦ Fax: 814/454-7929 ♦ World Wide Web: [www.zurn.com](http://www.zurn.com)

In Canada: ZURN INDUSTRIES LIMITED ♦ 3544 Nashua Drive ♦ Mississauga, Ontario L4V1L2 ♦ Phone: 905/405-8272 Fax: 905/405-1292