

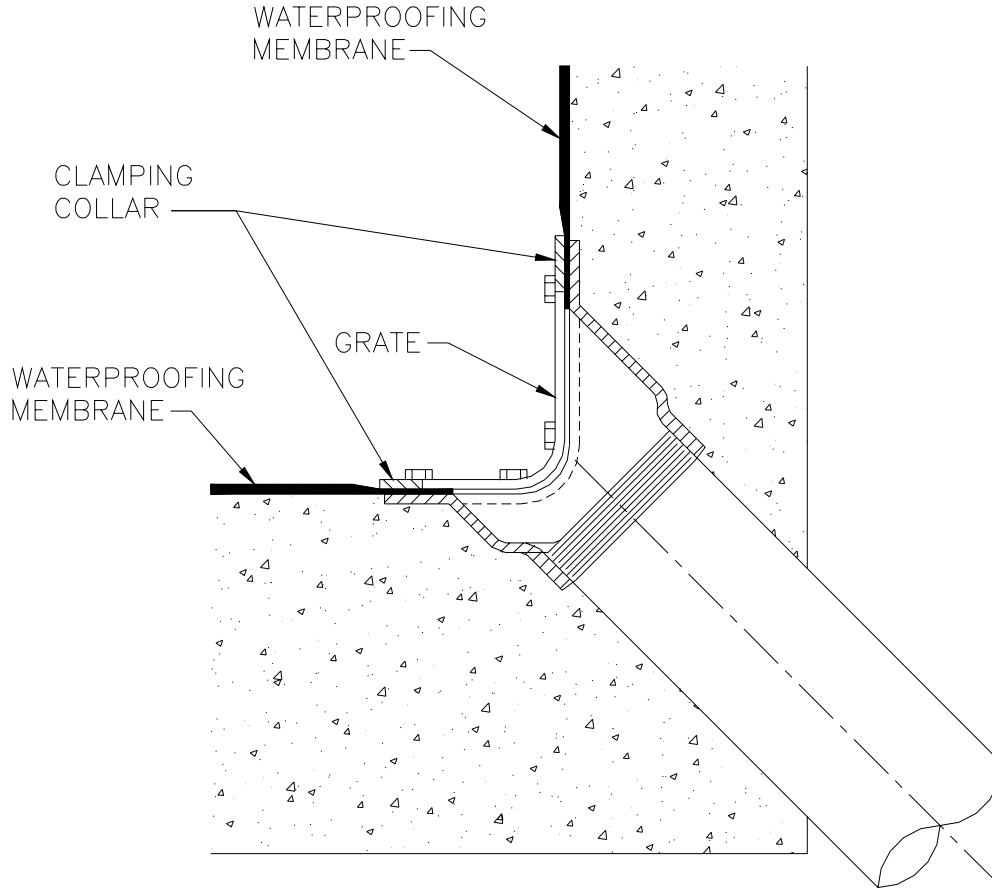


TYPICAL INSTALLATION

Z189

SCUPPER DRAIN

Dimensional Data (inches and [mm]) are Subject to Manufacturing Tolerances and Change Without Notice



Z189

SCUPPER DRAIN

Drain is illustrated with regularly furnished combination grate & membrane clamp. The Zurn scupper drain can be installed in most roof construction. Dimensional data is shown in the Engineering Handbook and on the Zurn submittal drawings. The drain body is secured to the pipe by a threaded connection or a no-hub connector. The type of connection must be specified upon ordering. The waterproofing membrane is to run up to and over the clamping flange area. The clamping collar is then placed on the drain and then secured. The design and method used for the installation of roofing materials is by others. For other available scupper drains, see Z160, Z161 & Z187.

Form # RD53

Date: 3/18/04

C.N. No. 92040

Rev.

ZURN INDUSTRIES, INC. ♦ SPECIFICATION DRAINAGE OPERATION ♦ 1801 Pittsburgh Ave. ♦ Erie, PA 16514

Phone: 814/455-0921 ♦ Fax: 814/454-7929 ♦ World Wide Web: www.zurn.com

In Canada: ZURN INDUSTRIES LIMITED ♦ 3544 Nashua Drive ♦ Mississauga, Ontario L4V1L2 ♦ Phone: 905/405-8272 Fax: 905/405-1292