

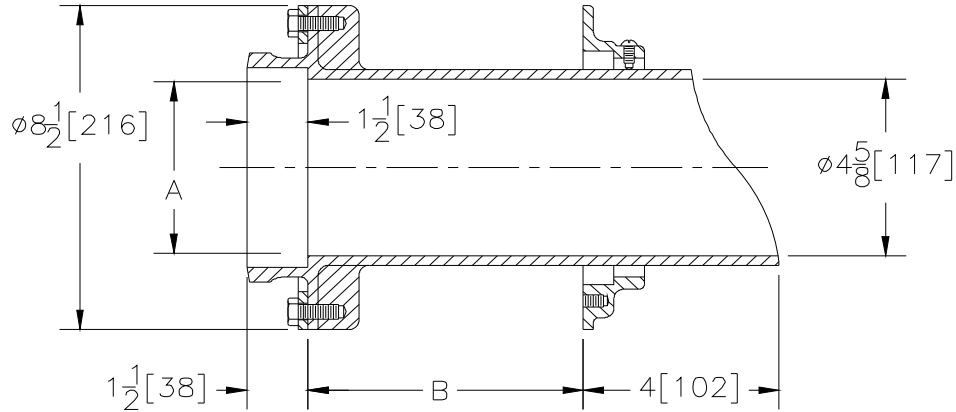


**Z198  
PARAPET SCUPPER  
SLEEVE**

SPECIFICATION SHEET

TAG \_\_\_\_\_

Dimensional Data (inches and [ mm ]) are Subject to Manufacturing Tolerances and Change Without Notice



A Pipe Size Inches	B Wall Thickness	Approx. Wt. Lbs. [kg]
4 [102]	8-1/2 [216]	26 [12]
	11 [279]	29 [13]
	13-1/2 [343]	31 [14]
	17-1/2 [444]	35 [16]
	22-1/2 [571]	40 [18]

**ENGINEERING SPECIFICATION:** ZURN Z198 Parapet Scupper Sleeve, Dura-Coated cast iron body with fixed position combination membrane flashing flange and clamp and parapet wall face closing.

**OPTIONS** (Check/specify appropriate options)

**PIPE SIZE**

4 [102]

(Specify size/type) **OUTLET**

\_\_\_\_\_ HB Hub

**WALL THICKNESS**

8-1/2, 11, 13-1/2, 17-1/2, 22-1/2  
[216, 279, 343, 444, 571]

**PREFIXES**

\_\_\_ Z D.C.C.I. Body\*

**SUFFIXES**

\_\_\_ -G Galvanized Cast Iron

**REV. E    DATE: 10/21/10    C.N. NO. 111920**

**DWG. NO. 58840    PRODUCT NO. Z198**

\*REGULARLY FURNISHED UNLESS OTHERWISE SPECIFIED

ZURN INDUSTRIES, LLC ♦ SPECIFICATION DRAINAGE OPERATION ♦ 1801 Pittsburgh Ave. ♦ Erie, PA 16514

Phone: 814/455-0921 ♦ Fax: 814/454-7929 ♦ World Wide Web: www.zurn.com

In Canada: ZURN INDUSTRIES LIMITED ♦ 3544 Nashua Drive ♦ Mississauga, Ontario L4V1L2 ♦ Phone: 905/405-8272 Fax: 905/405-1292