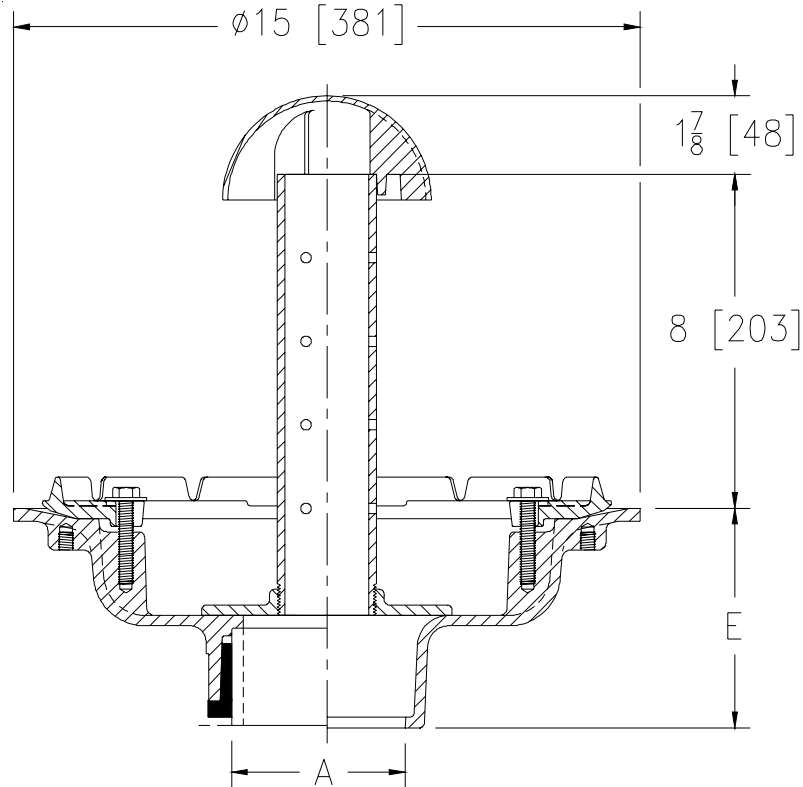




Z349 TERRACE PLANTING AREA DRAIN

SPECIFICATION SHEET
TAG _____

Dimensional Data (inches and [mm]) are Subject to Manufacturing Tolerances and Change Without Notice



A Pipe Size	Approx. Wt. Lbs. [kg]
2-3-4 [51-76-102]	40 [18]
5-6 [127-152]	42 [19]

ENGINEERING SPECIFICATION: ZURN Z349

Terrace Planting area Drain, Dura-Coated cast iron body, 8 [203] high perforated overflow standpipe with dome and combination membrane flashing clamp/gravel guard.

OPTIONS (Check/specify appropriate options)

PIPE SIZE

- 2 thru 6 [51 thru 152]
- 2 thru 4 & 6 [51 thru 102 & 152]
- 2 thru 6 [51 thru 152]
- 2 thru 6 [51 thru 152]
- 2 thru 4 [51-76-102]
- 6 [152]

(Specify size/type) **OUTLET**

- ___ IC Inside Caulk
- ___ IG Inside Gasket
- ___ IP Threaded
- ___ NH No-Hub
- ___ NL Neo-Loc
- ___ NL Neo-Loc

'E' BODY HT. DIM.

- 5-1/4 [133]
- 5-1/4 [133]
- 3-3/4 [95]
- 5-1/4 [133]
- 4-9/16 [117]
- 5-7/16 [138]

PREFIXES

- ___ Z D.C.C.I Body w/ Standpipe and Dome*
- ___ ZB D.C.C.I Body, Clamp w/ Polished Bronze Standpipe and Dome
- ___ ZN D.C.C.I Body, Clamp w/ Polished Nickel Bronze Standpipe and Dome

SUFFIXES

- ___ -C Underdeck Clamp
- ___ -G Galvanized Cast Iron
- ___ -SA Stabilizer Assembly (See Z1036)
- ___ -SD Longer Standpipe (Specify Height Required)
- ___ -SS Stainless Mesh Screen Over Standpipe

*REGULARLY FURNISHED UNLESS OTHERWISE SPECIFIED

REV. E	DATE: 11/08/10	C.N. NO. 120344
DWG. NO. 58980	PRODUCT NO. Z349	