

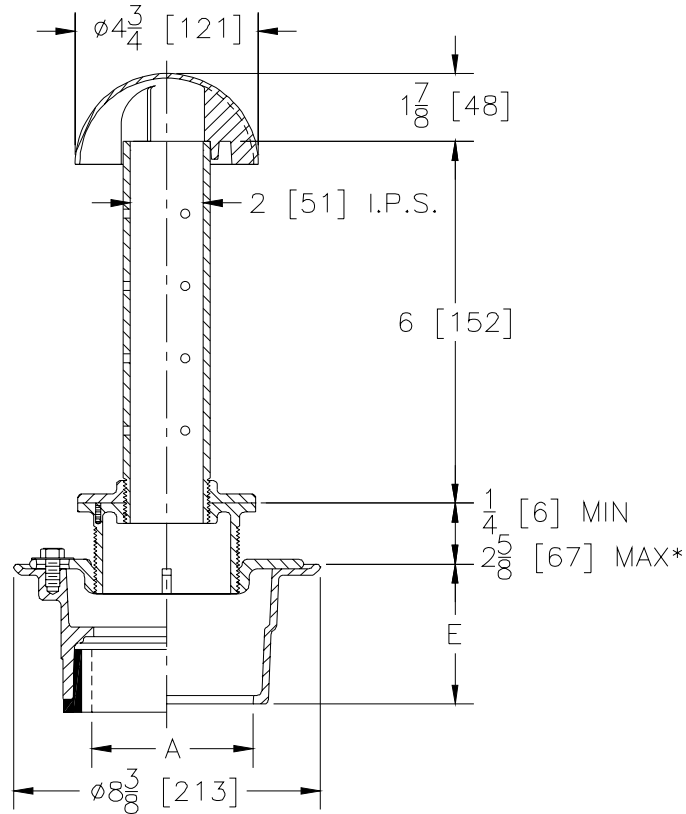


Z350 PLANTING AREA DRAIN

SPECIFICATION SHEET

TAG _____

Dimensional Data (inches and [mm]) are Subject to Manufacturing Tolerances and Change Without Notice



A-Pipe Size Inches	Approx. Wt. Lbs. [kg]
2-3-4 [51-76-102]	22 [10]

ENGINEERING SPECIFICATION: ZURN ZN350

Planting area Drain, Dura-Coated cast iron body with bottom outlet and combination invertible membrane clamp, vertically adjustable nickel bronze head, floor flange, dome and 2 [51] diameter perforated stainless steel standpipe.

OPTIONS (Check/specify appropriate options)

PIPE SIZE	(Specify size/type)	OUTLET	'E' BODY HT. DIM.
2-3-4 [51-76-102]	_____	IC Inside Caulk	3-7/8 [98]
2-3-4 [51-76-102]	_____	IG Inside Gasket	3-7/8 [98]
2 [51]	_____	IP Threaded	2-3/8 [60]
3 [76]	_____	IP Threaded	2-5/8 [67]
4 [102]	_____	IP Threaded	2-7/8 [73]
2-3-4 [51-76-102]	_____	NH No-Hub	3-7/8 [98]
2-3-4 [51-76-102]	_____	NL Neo-Loc	3-3/4 [95]

PREFIXES

- _____ ZB D.C.C.I Body w/ Polished Brass Standpipe
- _____ ZN D.C.C.I Body w/ Polished Stainless Steel Standpipe*

SUFFIXES

- _____ -C Underdeck Clamp
- _____ -G Galvanized Cast Iron
- _____ -P Trap Primer Connection
(Specify 1/2 [13] or 3/4 [19])
- _____ -PS Solid Standpipe
- _____ -SD Longer Standpipe (Specify Height Required)
- _____ -SS Stainless Steel Mesh Screen over Dome

*REGULARLY FURNISHED UNLESS OTHERWISE SPECIFIED

REV. D	DATE: 12/08/10	C.N. NO. 120345
DWG. NO. 58981	PRODUCT NO. Z350	