

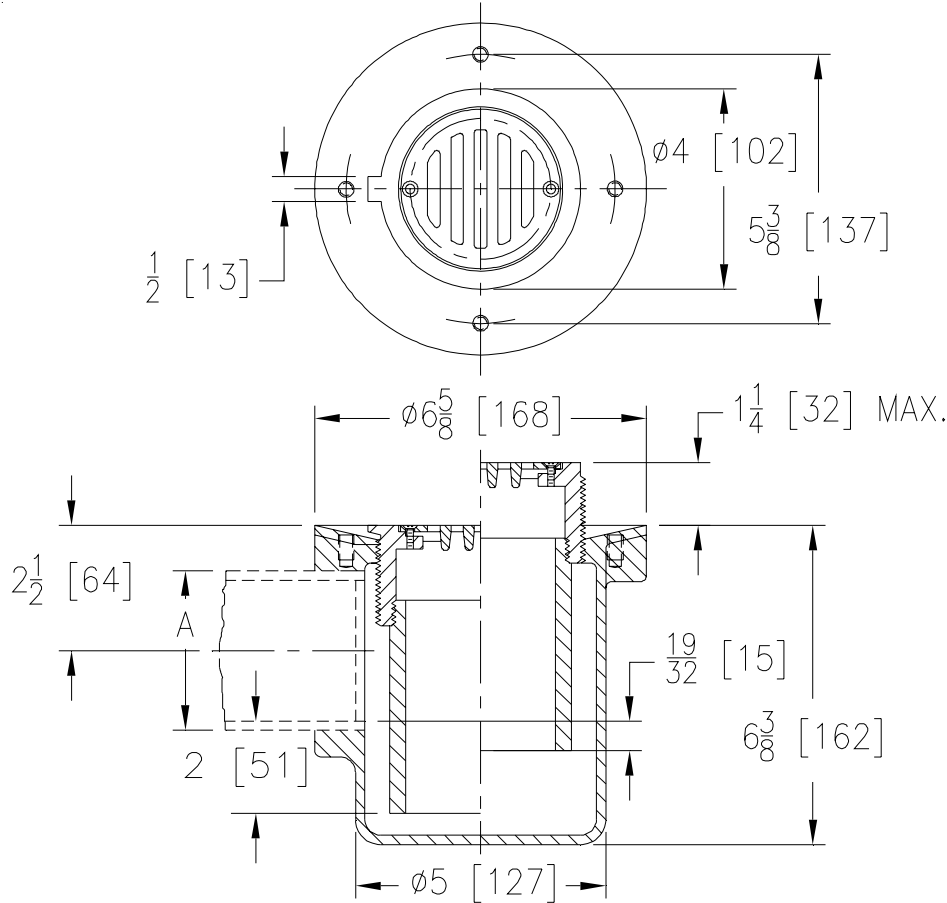


**Z355**

TAG \_\_\_\_\_

**PRISON CELL FLOOR DRAIN**

Dimensional Data (inches and [ mm ]) are Subject to Manufacturing Tolerances and Change Without Notice



A-Pipe Size Inches	Approx. Wt. Lbs. [kg]	Grate Open Area Sq. In. [cm <sup>2</sup> ]
2 [51]	13 [6]	3.5 [23]
3 [76]	15 [7]	

**ENGINEERING SPECIFICATION: ZURN ZN355**

Prison Cell floor drain, Dura-Coated cast iron body with side outlet, integral trap, anchor flange and adjustable nickel bronze slotted strainer secured with spanner type vandal-proof screws.

**OPTIONS** (Check/specify appropriate options)

**PIPE SIZE**

2-3 [51-76]

(Specify size) **OUTLET**

\_\_\_ IP Threaded

**PREFIXES**

- \_\_\_ ZB D.C.C.I. Body w/ Polished Bronze Top
- \_\_\_ ZN D.C.C.I. Body w/ Polished Nickel Bronze Top\*

**SUFFIXES**

- \_\_\_ -CP Chrome Plated Top
- \_\_\_ -G Galvanized Cast Iron

<b>REV. E</b>	<b>DATE: 11/08/10</b>	<b>C.N. NO. 120284</b>
<b>DWG. NO. 58983</b>	<b>PRODUCT NO. Z355</b>	

\*REGULARLY FURNISHED UNLESS OTHERWISE SPECIFIED