

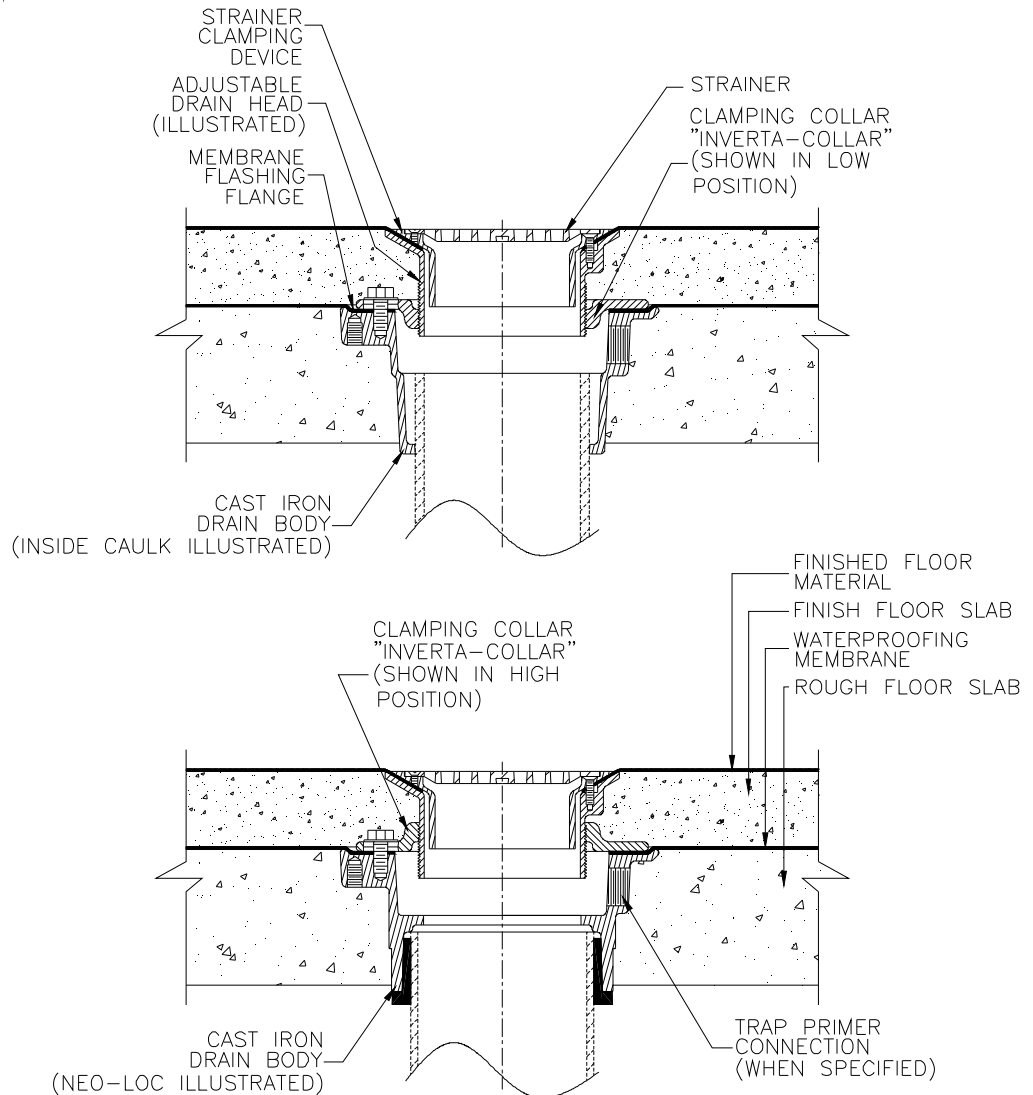


# TYPICAL INSTALLATION FOR Z415H FLOOR DRAIN

Dimensional Data (inches and [ mm ]) are Subject to Manufacturing Tolerances and Change Without Notice

## Z415H FLOOR DRAIN

The Z415H Zurn Floor Drain is designed to be installed in applications which require a clamping device at finished floor level. The drain pipe is run to an elevation below the expected finished floor level, so that the drain top will be flush with (or slightly below) the finished floor. Dimensional data for all drain heights and outlet types are shown in the Engineering Handbook, and on Zurn Submittal Drawings. The drain body is secured to the pipe with any of four connections, Threaded, No-Hub Connector, Lead Caulk or the Zurn Neo-Loc Gasket. The type of connection should be specified upon ordering any Zurn drain. Once the drain is set in place, the initial concrete sub-floor is poured to an elevation level with the top flange of the drain body. The waterproofing membrane is then run up to and over the flange. The clamping collar is then placed on the drain and secured. The drain head is then screwed into the clamping collar and finished floor slab is poured to finished grade. Note the Z-415 collar can be used on either side to change the total adjustment of the head elevation (for example 1-3/8 [52] - 2-3/8 [60] on one side, 1-3/4 [44] - 2-7/8 [73] on the other). Also, care should be taken to protect the top finish during installation, through the use of cardboard, tape or other protective material applied by the plumber. When finish floor material is applied, strainer and strainer clamping device should be removed. Install finish floor material and run into drain head. Clamp in place using strainer clamping device and re-install strainer.



Form # FD84

Date: 1/27/10

C.N. No. 110620

Rev.

ZURN INDUSTRIES, LLC. ♦ SPECIFICATION DRAINAGE OPERATION ♦ 1801 Pittsburgh Ave. ♦ Erie, PA 16514

Phone: 814/455-0921 ♦ Fax: 814/454-7929 ♦ World Wide Web: [www.zurn.com](http://www.zurn.com)

In Canada: ZURN INDUSTRIES LIMITED ♦ 3544 Nashua Drive ♦ Mississauga, Ontario L4V1L2 ♦ Phone: 905/405-8272 Fax: 905/405-1292