



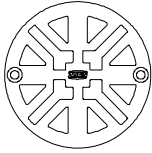
Z420

DEEP SHANK FLOOR & SHOWER DRAIN FOR MARBLE & GRANITE APPLICATIONS

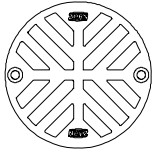
SPECIFICATION SHEET

TAG _____

Dimensional Data (inches and [mm]) are Subject to Manufacturing Tolerances and Change Without Notice



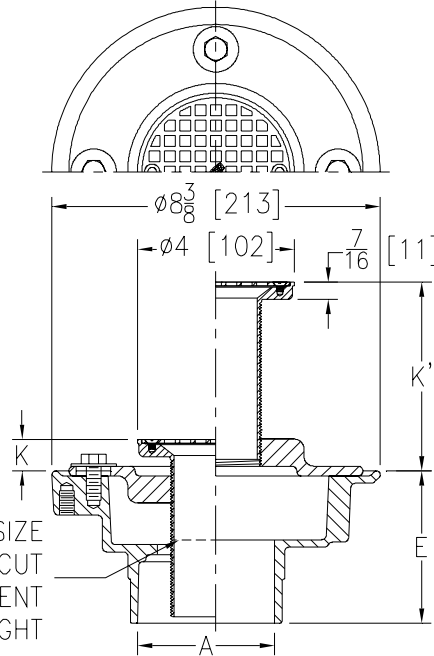
(OPTIONAL) -DS1 STRAINER



(OPTIONAL) -DS2 STRAINER



(OPTIONAL) -DS3 STRAINER



FOR 2 [51] OUTLET SIZE
SHANK MUST BE CUT
ACCORDINGLY, DEPENDENT
ON REQUIRED ADJUSTMENT HEIGHT

Dimensions In Inches					Approx. Wt. Lbs. [kg]	Strainer Open Area Sq. In. [cm ²]
A Pipe Size	K		K'			
	Min.	Max.	Min.	Max.		
2-3-4 [51-76-102]	13/16 [21]	3-3/4 [95]	1-1/4 [32]	4-13/16 [122]	15 [7]	5 [32]
6 [152]	13/16 [21]	3-3/4 [95]	1-1/4 [32]	4-13/16 [122]	13 [6]	5 [32]

ENGINEERING SPECIFICATION: ZN420

Deep Shank Floor and shower drain, white acid resisting coated cast iron body and invertible membrane clamp with seepage slots, polished nickel bronze adjustable head with 2 [51] N.P.S.M shank and 4 [102] diameter round secured strainer.

OPTIONS (Check/specify appropriate options)

PIPE SIZE

- 2, 3, 4 [51, 76, 102]
- 2, 3, 4 [51, 76, 102]
- 2 [51]
- 3 [76]
- 4 [102]
- 6 [152]
- 2, 3, 4 [51, 76, 102]
- 2, 3, 4 [51, 76, 102]

(Specify size/type) OUTLET

- _____ IC Inside Caulk
- _____ IG Inside Gasket
- _____ IP Threaded
- _____ IP Threaded
- _____ IP Threaded
- _____ IP Threaded
- _____ NH No-Hub
- _____ NL Neo-Loc

'E' BODY HT. DIM.

- 3-7/8 [98]
- 3-7/8 [98]
- 2-3/8 [60]
- 2-5/8 [67]
- 2-7/8 [73]
- 2-3/4 [70]
- 3-7/8 [98]
- 3-3/4 [95]

PREFIXES

- _____ ZB White A.R.C. Cast Iron Body and Collar w/ Polished Bronze Top
- _____ ZN White A.R.C. Cast Iron Body and Collar w/ Polished Nickel Bronze Top*

SUFFIXES

- _____ -CP Chrome Plated Bronze Top (ZB only)
- _____ -DS1 Decorative Strainer
- _____ -DS2 Decorative Strainer
- _____ -DS3 Decorative Strainer
- _____ -G Galvanized Cast Iron
- _____ -P Trap Primer Connection (Specify 1/2 [13] or 3/4 [19])
- _____ -SA Stabilizer Assembly (See Z1035)
- _____ -SQ Stabilizer Q-Deck (See Z1035-Q)
- _____ -SR Stabilizer Ring (See Z400-SR)
- _____ -TC Neo-Loc Test Gasket (2-4 [51-102] NL Bottom Outlet Only)
- _____ -VP Vandal-Proof Secured Top

REV. A DATE: 11/17/10 C.N. NO. 120455

DWG. NO. 83195

PRODUCT NO. Z420

*REGULARLY FURNISHED UNLESS OTHERWISE SPECIFIED