



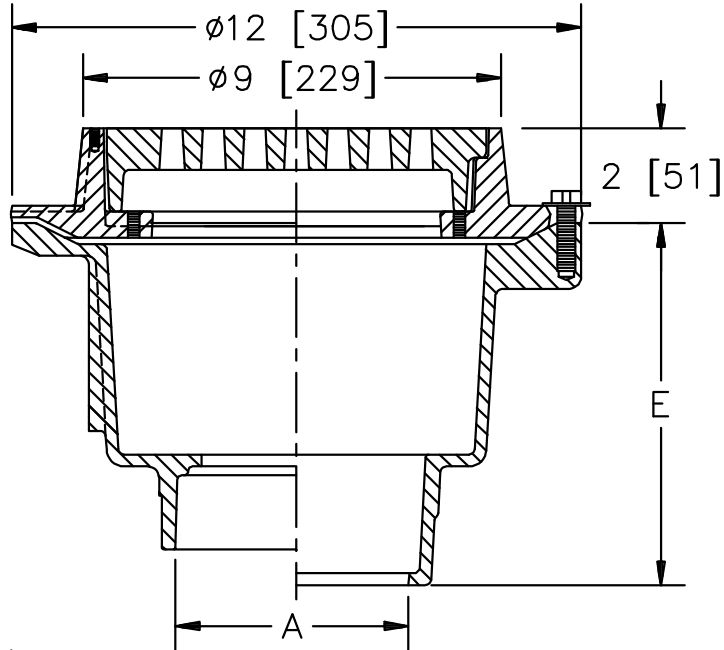
Z511

Ø9 [229] HEAVY-DUTY DRAIN

SPECIFICATION SHEET

TAG _____

Dimensional Data (inches and [mm]) are Subject to Manufacturing Tolerances and Change Without Notice



A Pipe Size In.	Approx. Wt. Lbs. [kg]	Grate Open Area Sq. In. [cm ²]
2-3-4 [51-76-102]	40 [18]	18 [116]

ENGINEERING SPECIFICATION: ZURNZ511

9 [229] Diameter top drain, Dura-Coated cast iron deep sump body with bottom outlet, seepage pan and combination membrane flashing clamp and frame for heavy-duty cast iron deep flange grate.

OPTIONS (Check/specify appropriate options)

PIPE SIZE

- 2-3-4 [51-76-102]
- 2-3-4 [51-76-102]
- 2-3-4 [51-76-102]
- 3-4 [76-102]

(Specify size/type) **OUTLET**

- ___ IC Inside Caulk
- ___ IG Inside Gasket
- ___ NL Neo-Loc
- ___ IP Threaded

'E' BODY HT. DIM.

- 7-5/8 [194]
- 7-5/8 [194]
- 6-7/8 [175]
- 7-5/8 [194]

PREFIXES

- ___ Z D.C.C.I. Body and Top*
- ___ ZB D.C.C.I. Body w/ Polished Bronze Top (Add 3/16 [5] to 2 [51] and 3/4 [19] to 9 [229] dim.)
- ___ ZN D.C.C.I. Body w/ Polished Nickel Bronze Top (Add 3/16 [5] to 2 [51] and 3/4 [19] to 9 [229] dim.)

SUFFIXES

- ___ -AR Acid Resisting Epoxy Coated Cast Iron
- ___ -BT Bell Trap
- ___ -DG Duresist Grate
- ___ -F Extension Frame (Specify Total Height Req'd.)
- ___ -G Galvanized Cast Iron
- ___ -HP Heel-Proof Grate
- ___ -J Auxiliary Inlet Connection
(Specify 1-1/2 [38] or 2 [51] IP, Number & Location)
- ___ -P Trap Primer Connection
- ___ -S Secondary Strainer
- ___ -SC Solid Cover w/ Lift Handle
- ___ -SG Solid Gasketed Cover
- ___ -TC Neo-Loc Test Cap Gasket
(2 [51]-4 [102] NL Bottom Outlet Only)
- ___ -TS Top Secured with Slotted Screws
- ___ -V Backwater Valve (For 3 & 4 [76-102] IC & IP or 3" IG Connections only)
- ___ -VP Vandal-Proof Secured Top
- ___ -W Winter Closure Plug (For 3 & 4 [76-102] IC & IP or 3" IG Connections only)
- ___ -Y Sediment Bucket

*REGULARLY FURNISHED UNLESS OTHERWISE SPECIFIED

REV. H	DATE: 06/15/11	C.N. NO. 121415
DWG. NO. 58926	PRODUCT NO. Z511	