



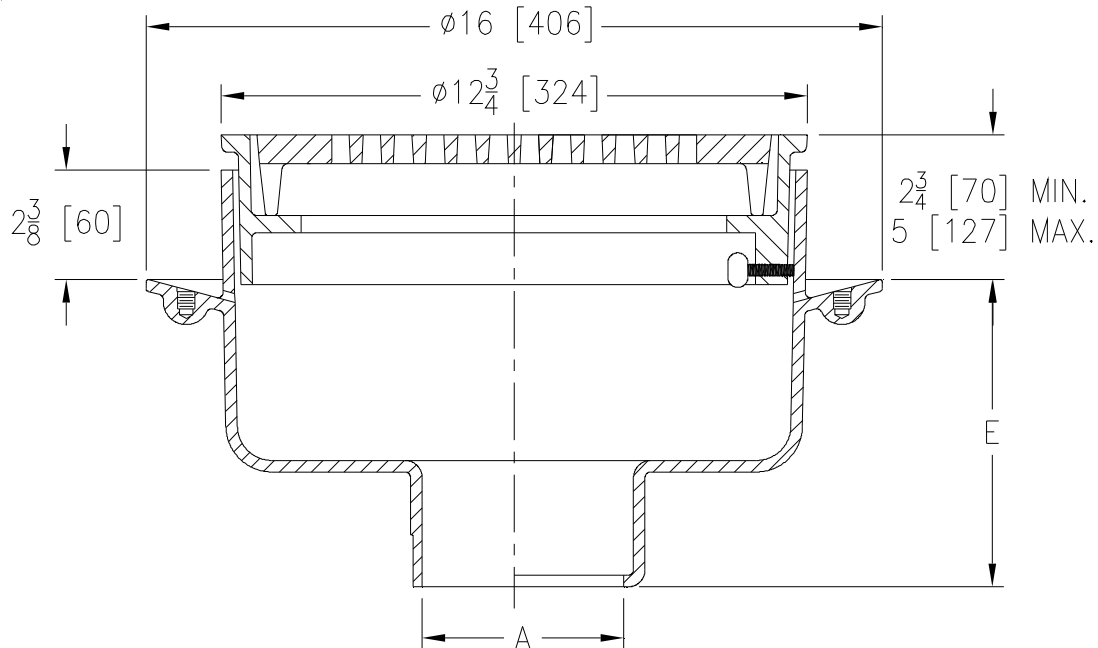
Z521

12 [305] DIAMETER ADJUSTABLE HEAVY-DUTY DRAIN

SPECIFICATION SHEET

TAG _____

Dimensional Data (inches and [mm]) are Subject to Manufacturing Tolerances and Change Without Notice



A Pipe Size In.	Approx. Wt. Lbs. [kg]	Grate Open Area Sq. In. [cm ²]
3-4-5-6 [76-102-127-152]	60 [27]	30 [194]

ENGINEERING SPECIFICATION: ZURN Z521

12 [305] Diameter top drain, Dura-Coated cast iron body with bottom outlet, seepage pan and adjustable extension frame with heavy-duty tractor grate.

OPTIONS (Check/specify appropriate options)

PIPE SIZE

- 3 thru 6 [76 thru 152]
- 3-4-6 [76-102-152]
- 4 thru 6 [102 thru 152]
- 4 [102]

(Specify size/type) **OUTLET**

- ___ IC Inside Caulk
- ___ IG Inside Gasket
- ___ IP Threaded
- ___ NL Neo-Loc

'E' DIM.

- 6-5/8 [168]
- 6-5/8 [168]
- 5-1/4 [133]
- 5-7/8 [149]

PREFIXES

- ___ Z D.C.C.I. Body and Top*
- ___ ZB D.C.C.I. Body with Polished Bronze Top (Add 3/16 [5] to 2-3/4 [70] - 5 [127] Dim.)
- ___ ZN D.C.C.I. Body with Polished Nickel Bronze Top (Add 3/16 [5] to 2-3/4 [70] - 5 [127] Dim.)

SUFFIXES

- ___ -C Clamp Collar
- ___ -DG Duresist Grate
- ___ -F Extension Frame (3 [76] Min. - 8 [203] Max.)
- ___ -G Galvanized Cast Iron
- ___ -S Secondary Strainer
- ___ -SC Solid Cover
- ___ -T Square Top
- ___ -TC Neo-Loc Test Cap Gasket (4 [102] NL Bottom Outlet Only)
- ___ -TS Top Secured with Slotted Screws
- ___ -V Backwater Valve (See Z1099)
- ___ -VP Vandal-Proof Secured Top
- ___ -Y Sediment Bucket

REV. E	DATE: 11/16/10	C.N. NO. 120446
DWG. NO. 58931	PRODUCT NO. Z521	

*REGULARLY FURNISHED UNLESS OTHERWISE SPECIFIED