



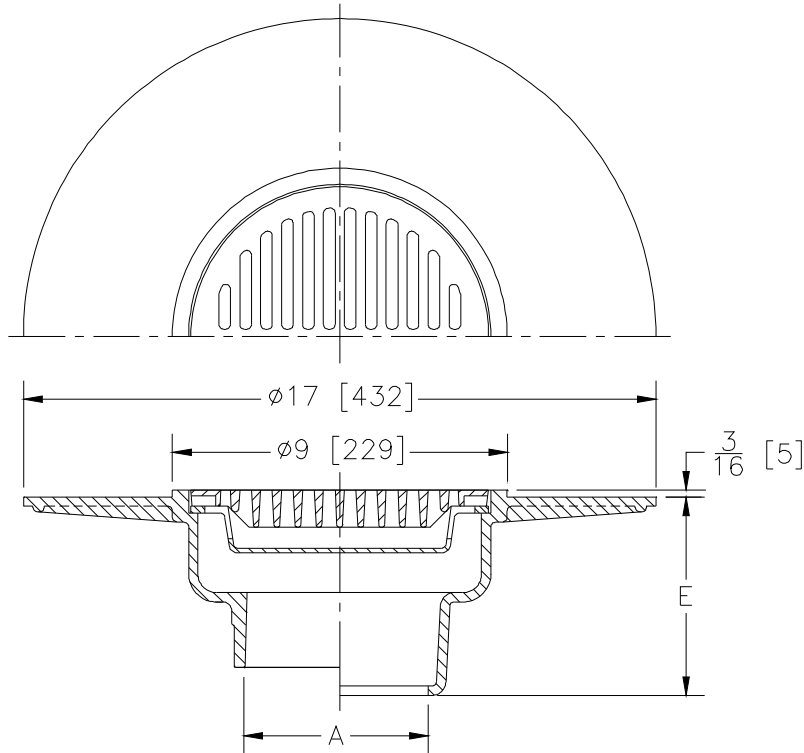
**Z530**

9 [229] MEDIUM-DUTY WIDE FLANGE DECK DRAIN

SPECIFICATION SHEET

TAG \_\_\_\_\_

Dimensional Data (inches and [ mm ]) are Subject to Manufacturing Tolerances and Change Without Notice



A- Pipe Size In.	Approx. Wt. Lbs. [kg]	Grate Open Area Sq. In. [cm <sup>2</sup> ]
2-3-4 [51-76-102]	49 [22]	18 [116]

**ENGINEERING SPECIFICATION: ZURN Z530**

9 [229] Diameter wide flange deck drain for latex decks, Dura-Coated cast iron body with latex troweling flange, flat, heel-proof, medium-duty grate and suspended sediment bucket.

**OPTIONS** (Check/specify appropriate options)

**PIPE SIZE**

(Specify size/type) **OUTLET**

**'E' BODY HT. DIM.**

2-3-4 [51-76-102]	___ IC	Inside Caulk	5-1/2 [140]
2-3-4 [51-76-102]	___ IG	Inside Gasket	5-1/2 [140]
2-3-4 [51-76-102]	___ IP	Threaded	4 [102]
2-3-4 [51-76-102]	___ NL	Neo-Loc	4-3/4 [121]

**PREFIXES**

- \_\_\_ Z D.C.C.I. Body and Top\*
- \_\_\_ ZB D.C.C.I. Body with Polished Bronze Top
- \_\_\_ ZN D.C.C.I. Body with Polished Nickel Bronze Top

**SUFFIXES**

- |         |                                       |         |  |
|---------|---------------------------------------|---------|--|
| ___ -AR | Acid Resisting Epoxy Coated Cast Iron | ___ -TC | Neo-Loc Test Cap Gasket (2 [51]-4 [102] NL Bottom Outlet Only) |
| ___ -C  | Underdeck Clamp                       | ___ -TS | Top Secured with Slotted Screws                                |
| ___ -D  | Dome Grate                            | ___ -VP | Vandal Proof Secured Top                                       |
| ___ -DG | Duresist Grate                        | ___ -XJ | Expansion Joint (See Z190)                                     |
| ___ -G  | Galvanized Cast Iron                  |         |  |
| ___ -LY | (Less) Sediment Bucket                |         |  |
| ___ -SC | Solid Cover                           |         |  |

\* Regularly furnished unless otherwise specified.