



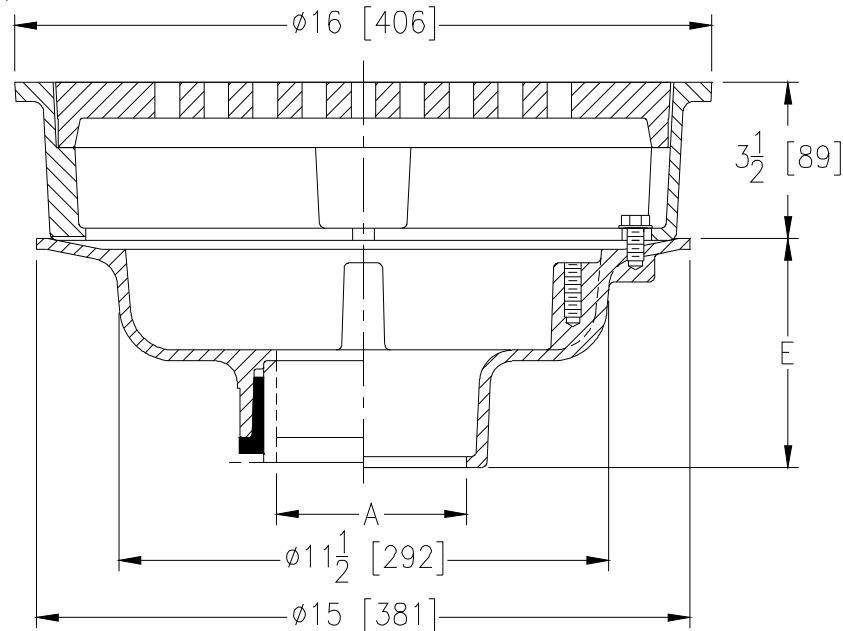
Z545

SPECIFICATION SHEET

16 [406] DIAMETER HEAVY DUTY DRAIN

TAG _____

Dimensional Data (inches and [mm]) are Subject to Manufacturing Tolerances and Change Without Notice



A Pipe Size	Approx. Wt. Lbs. [kg]	Grate Open Area Sq. In. [cm ²]
2-3-4-5-6 [51-76-102-127-152]	69 [31]	45 [290]
8 [203]	71 [32]	
10 [254]	70 [32]	

ENGINEERING SPECIFICATION: ZURN Z545

16 [406] Diameter top drain, Dura-Coated cast iron body with bottom outlet, seepage pan and combination membrane flashing clamp and frame for heavy-duty cast iron slotted grate.

OPTIONS (Check/specify appropriate options)

PIPE SIZE

- 2 thru 6-8-10 [51 thru 152-203-254]
- 2-3-4-6 [51-76-102-152]
- 2 thru 6-8-10 [51 thru 152-203-254]
- 2 thru 6-8-10 [51 thru 152-203-254]
- 2 thru 4 [51 thru 102]

(Specify size/type) **OUTLET**

- ___ IC Inside Caulk
- ___ IG Inside Gasket
- ___ IP Threaded
- ___ NH No-Hub
- ___ NL Neo-Loc

'E' BODY HT. DIM.

- 5-1/4 [133]
- 5-1/4 [133]
- 3-3/4 [95]
- 5-1/4 [133]
- 4-5/8 [117]

PREFIXES

- ___ Z D.C.C.I. Body and Top*
- ___ ZB D.C.C.I. Body with Polished Bronze Top (Add 3/16 [5] to 3-1/2 [89] Dim.)
- ___ ZN D.C.C.I. Body with Polished Nickel Bronze Top (Add 3/16 [5] to 3-1/2 [89] Dim.)

SUFFIXES

- ___ -DG Duresist Grate
- ___ -G Galvanized Cast Iron
- ___ -TC Neo-Loc Test Cap Gasket (2-4 [51-102] NL Bottom Outlet Only)
- ___ -VP Vandal-Proof Secured Top
- ___ -90 90° Threaded Side Outlet (2-6 [51-152])

REV. G	DATE: 03/29/13	C.N. NO. 129047
PROD./DWG. NO. Z545		

*REGULARLY FURNISHED UNLESS OTHERWISE SPECIFIED