



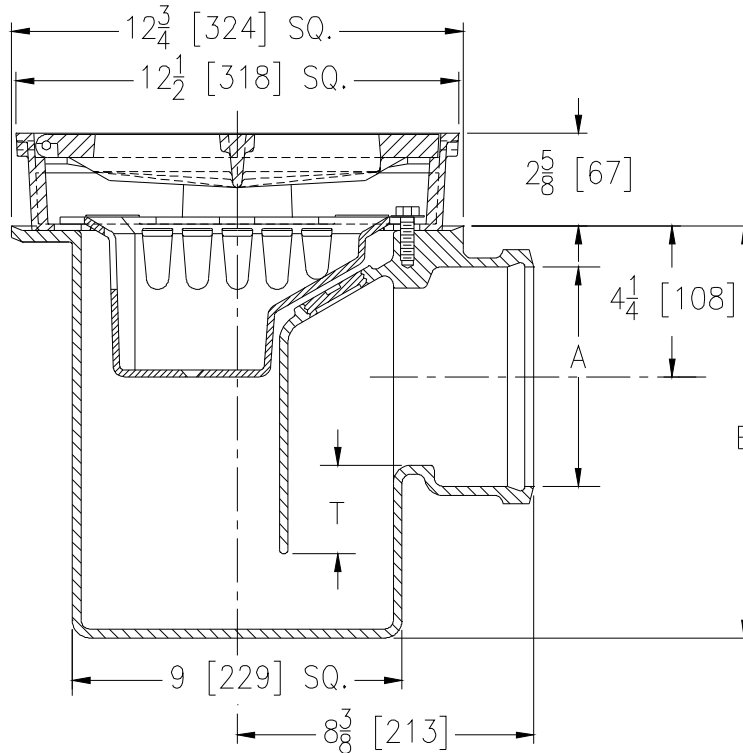
Z645

12 x 12 [305 X 305] HEAVY-DUTY DRAIN

SPECIFICATION SHEET

TAG _____

Dimensional Data (inches and [mm]) are Subject to Manufacturing Tolerances and Change Without Notice



Dimensions In Inches		Approx. Wt. Lbs. [kg]	Grate Open Area Sq. In. [cm ²]
A - Pipe Size	T		
2 [51]	4 [102]	112 [51]	44 [284]
3 [76]	3-1/2 [89]		
4 [102]	3 [76]		
5 [127]	2-1/2 [64]	118 [54]	
6 [152]	2 [51]		

ENGINEERING SPECIFICATION: Zurn Z645

12 [305] Square top drain, Dura-Coated cast iron body with side outlet, internal trap with bronze cleanout plug, seepage pan and combination membrane flashing clamp and frame for cast iron hinged heavy-duty slotted grate with suspended aluminum sediment bucket.

OPTIONS (Check/specify appropriate options)

PIPE SIZE

2 thru 6 [51 thru 152]

(Specify size) **OUTLET**

_____ IC Inside Caulk

'E' BODY HT. DIM

11-5/8 [295]

PREFIXES

- ___ Z D.C.C.I. Body and Top*
- ___ ZB D.C.C.I Body w/Polished Bronze Top (Add 3/16 [5] to 2-5/8 [67] and 3/4 [20] to 12-1/2 [318] Dim.)
- ___ ZN D.C.C.I Body w/Polished Nickel Bronze Top (Add 3/16 [5] to 2-5/8 [67] and 3/4 [20] to 12-1/2 [318] Dim.)

SUFFIXES

- ___ -AR Acid Resistant Epoxy Coated Cast Iron
- ___ -DG Duresist Grate
- ___ -G Galvanized Cast Iron
- ___ -HL Hinged Locking Grate
- ___ -P Trap Primer Connection
(Specify 1/2 [13] or 3/4 [19])
- ___ -TS Top Secured with Slotted Screws
- ___ -VP Vandal-Proof Secured Top
- ___ -Y Cast Iron Sediment Bucket

*REGULARLY FURNISHED UNLESS OTHERWISE SPECIFIED

REV. G	DATE: 11/8/10	C.N. NO. 120327
DWG. NO. 59247	PRODUCT NO. Z645	