



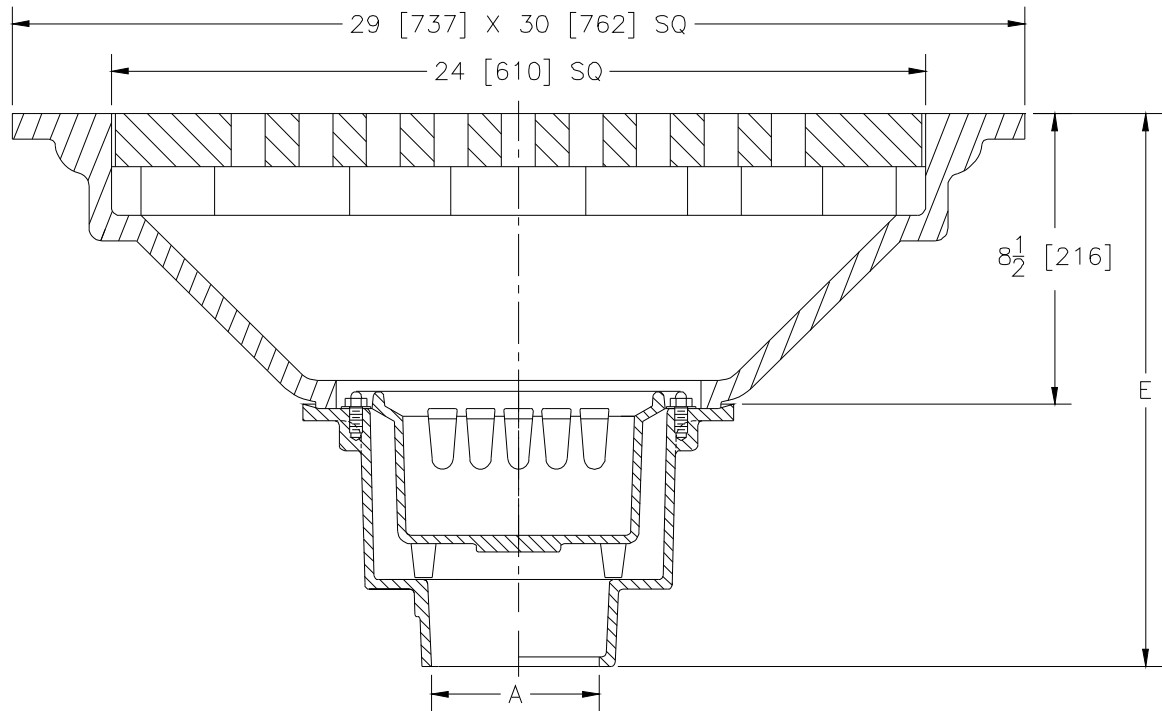
Z673

29 x 30 [737 x 762] EXTRA-HEAVY-DUTY DRAIN

SPECIFICATION SHEET

TAG _____

Dimensional Data (inches and [mm]) are Subject to Manufacturing Tolerances and Change Without Notice



A Pipe Size	Approx. Wt. Lbs. [kg]	No. of Grates	Grate Open Area Sq. In. [cm ²]
4 [102]	294 [133]	2	166 [1071]
5, 6 [127, 152]	314 [142]		

ENGINEERING SPECIFICATION: ZURN Z673
 29 X 30 [737 X 762] Top Drain, Dura-Coated cast iron body with bottom outlet, seepage pan and combination membrane flashing clamp and frame for cast iron extra-heavy-duty loose slotted grate with suspended sediment bucket.

OPTIONS (Check/specify appropriate options)

PIPE SIZE

- 4, 5, 6 [102, 127, 152]
- 4, 6 [102, 127, 152]
- 4 [102]
- 4, 6 [102, 152]

(Specify size/type) **OUTLET**

- _____ IC Inside Caulk
- _____ IG Inside Gasket
- _____ IP Threaded
- _____ NH No-Hub

'E' BODY HT. DIM.

- 16-1/4 [413]
- 16-1/4 [413]
- 14-5/8 [371]
- 16-1/4 [413]

PREFIXES

- _____ Z D.C.C.I. Body and Top*

SUFFIXES

- _____ -DG Duresist Grate
- _____ -G Galvanized Cast Iron
- _____ -SS Stainless Mesh Liner for Bucket
- _____ -TS Top Secured with Slotted Screws
- _____ -V Backwater Valve
- _____ -VP Vandal-Proof Secured Top
- _____ -90 90° Threaded Side Outlet Body

REV. D	DATE: 11/8/10	C.N. NO. 120334
DWG. NO. 59254	PRODUCT NO. Z673	

*REGULARLY FURNISHED UNLESS OTHERWISE SPECIFIED