

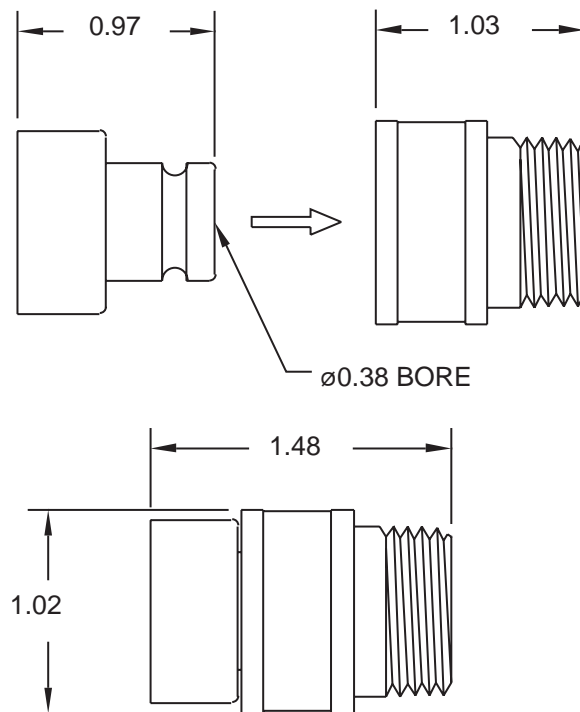


IN-LINE HOSE QUICK DIS-CONNECT

Z7000-QD

TAG _____

ENGINEERING SPECIFICATIONS: The ZURN Z7000-QD Quick Dis-Connect is designed to work with the ZURN Handshower/ Handwall Shower Hose. The body is manufactured in brass w/hard chrome finish. The inlet and outlet are supplied 1/2-14NPSH threads.



Note: All dimensions are for reference only. Do not use for pre-plumbing

OPTIONAL ACCESSORIES

Suffix Description
No Options Required

STANDARDS

Tested to meet or to exceed ANSI
A112.18.1M

ZURN INDUSTRIES, INC. ♦ COMMERCIAL BRASS OPERATION ♦ 2640 SOUTH WORK STREET ♦ FALCONER NY 14733

Phone: 1-716-665-1132 ♦ Fax: 1-716-665-1135 ♦ World Wide Web: www.zurn.com

In Canada: ZURN INDUSTRIES LIMITED ♦ 3544 Nashua Drive ♦ Mississauga, Ontario L4V1L2 ♦ Phone: 905/405-8272 Fax: 905/405-1292