

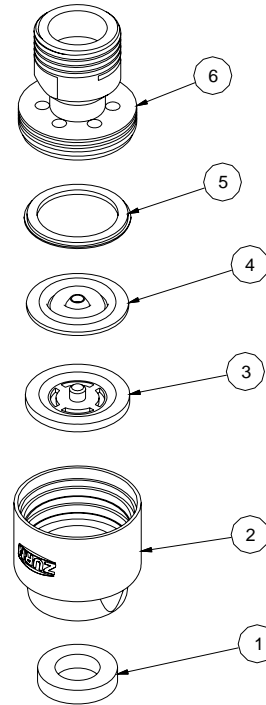


INSTALLATION INSTRUCTIONS

1. SCREW FEMALE THREADS ONTO ELBOW OR SHOWERARM OF WATER SUPPLY.
2. ATTACH HOSE FROM HANDWALL UNIT TO MALE THREAD ON VACUUM BREAKER. ARROW ON VACUUM BREAKER SHOULD POINT IN DIRECTION OF WATER FLOW.

Z7000-VB PARTS LIST

Item	Part Number	Description	Qty.
1	92475001	Washer	1
2	92479001	Vacuum Breaker Housing	1
3	92477001	Bladder Bushing	1
4	92478001	Rubber Bladder	1
5	92476001	Connector Bushing	1
6	92480001	Locking Connector	1



Maintenance and Trouble Shooting Guide		
Problem	Cause	Solution
Vacuum breaker or shower valve makes loud noise.	Large pressure difference causing piston in valve to move rapidly.	Alter water system such that pressure differential is no more than 5 psi from hot to cold.
Insufficient water flow	Handwall unit/ vacuum breaker combination restricting water flow.	Remove flow control device in handwall unit per local codes.
	Showerhead plugged.	Clean showerhead.
	Low Pressure.	Increase pressure.