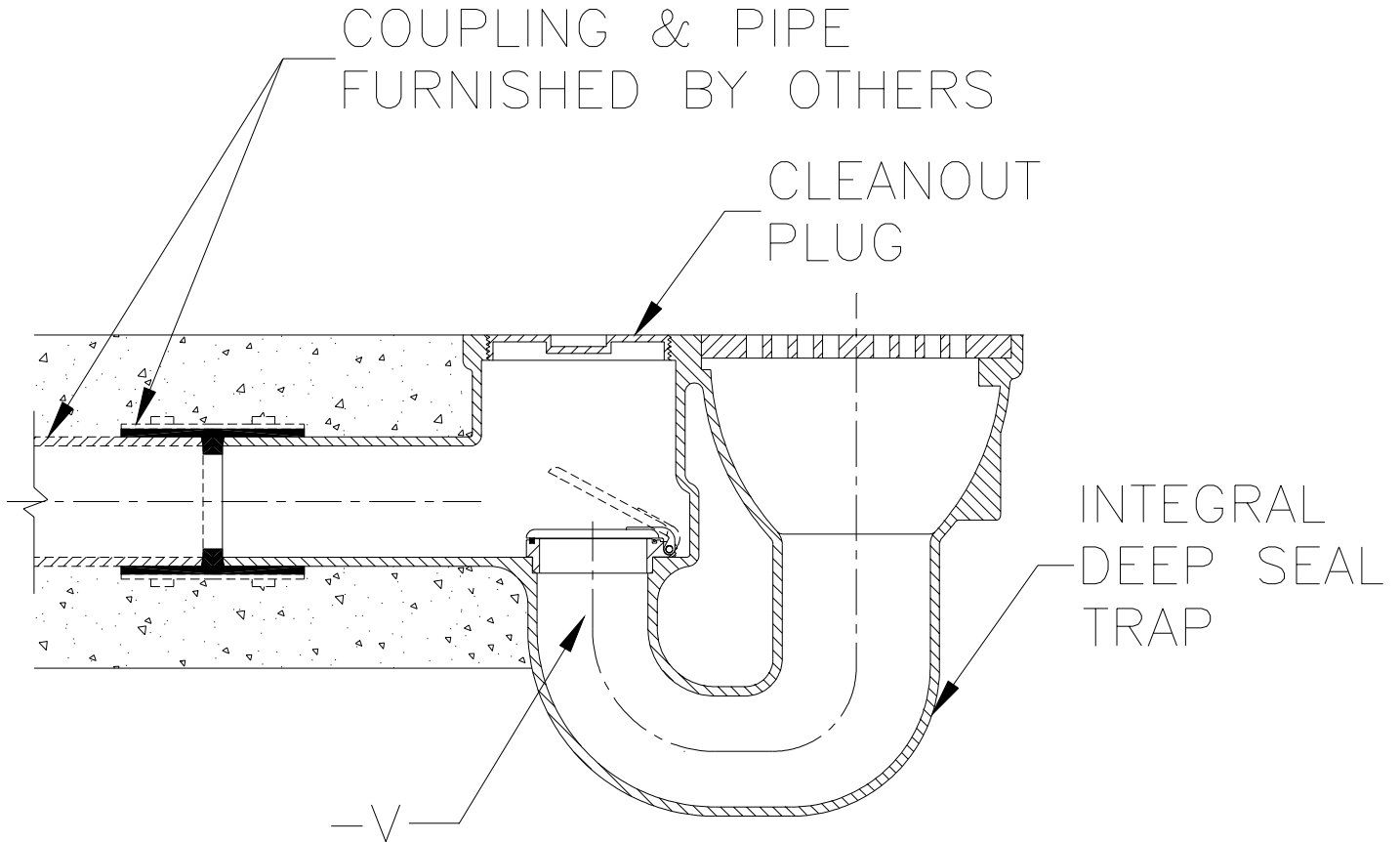




TYPICAL INSTALLATION
Z-730-V
MEDIUM-DUTY DRAIN

Dimensional Data (inches and [mm]) are Subject to Manufacturing Tolerances and Change Without Notice



Z-730-V
9 [229] DIAMETER TOP MEDIUM-DUTY DRAIN

9 [229] Diameter top drain with medium duty grate, double wall integral trap, side outlet and a floor level cleanout as standard is installed in a concrete slab. Drain is illustrated with flapper type backwater valve (-V) to resist backflow.

Form # FD23

Date: 8/9/99

C.N. No. 83052

Rev.

ZURN INDUSTRIES, INC. ♦ SPECIFICATION DRAINAGE OPERATION ♦ 1801 Pittsburgh Ave. ♦ Erie, PA 16514

Phone: 814/455-0921 ♦ Fax: 814/454-7929 ♦ World Wide Web: www.zurn.com

In Canada: ZURN INDUSTRIES LIMITED ♦ 3544 Nashua Drive ♦ Mississauga, Ontario L4V1L2 ♦ Phone: 905/405-8272 Fax: 905/405-1292