



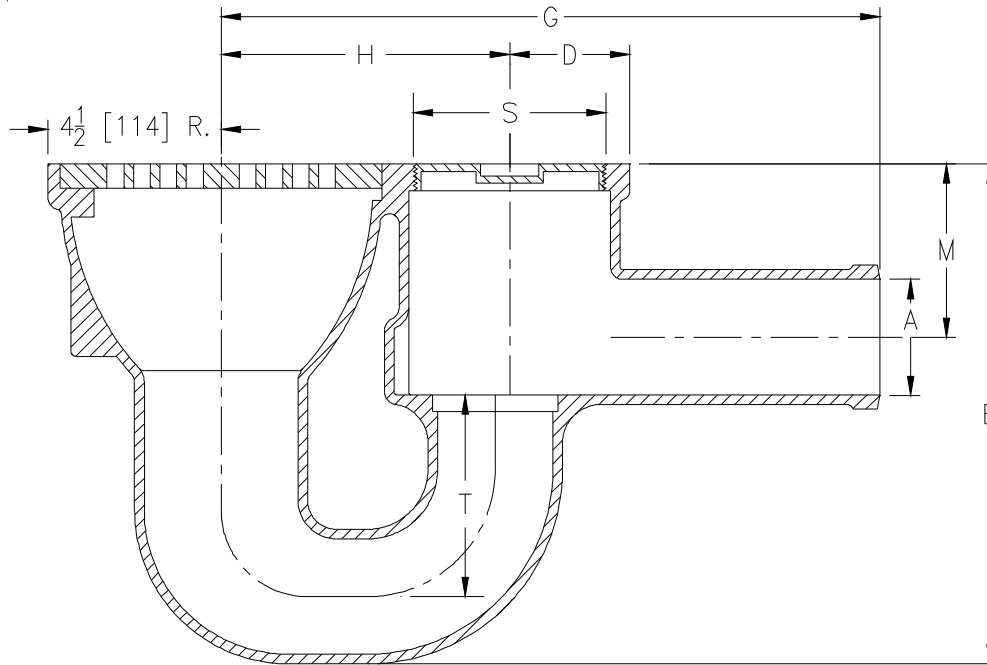
Z730

9 [229] TOP MEDIUM-DUTY DRAIN

SPECIFICATION SHEET

TAG _____

Dimensional Data (inches and [mm]) are Subject to Manufacturing Tolerances and Change Without Notice



A Pipe Size	S Cleanout Plug Size	Dimensions In Inches					Approx. Wt. Lbs. [kg]	Grate Open Area Sq. In. [cm ²]
		Rad D.	G	H	M	T		
2 [51]	3-1/2 [89]	2-1/2 [64]	14 [356]	6-1/2 [165]	3-3/4 [95]	4 [102]	36 [16]	23 [148]
3 [76]	4-1/2 [114]	3-1/8 [79]	17-1/8 [435]	7-1/2 [191]	4-1/4 [108]	4 [102]	54 [24]	
4 [102]	5-1/2 [140]	3-5/8 [92]	19-3/8 [492]	7-1/2 [191]	4-3/4 [121]	5 [127]	79 [36]	

ENGINEERING SPECIFICATION ZURN Z730 9 [229] Diameter top drain, Dura-Coated cast iron body with integral double wall trap and side outlet, with bronze floor level cleanout plug and medium-duty loose slotted grate.

OPTIONS (Check/specify appropriate options)

PIPE SIZE	(Specify size/type) OUTLET	'E' BODY HT. DIM.
2 [51]	___ SP Spigot	11 [280]
3 [76]	___ SP Spigot	13 [330]
4 [102]	___ SP Spigot	16 [406]

PREFIXES

- ___ Z D.C.C.I. Body and Top*
- ___ ZB D.C.C.I. Body with Polished Bronze Top (Add 3/16 [5] to 'M' Dim.)
- ___ ZN D.C.C.I. Body with Polished Nickel Bronze Top (Add 3/16 [5] to 'M' Dim.)

SUFFIXES

- | | |
|---|---|
| ___ -DG Duresist Grate | ___ -TS Top Secured With Slotted Screws |
| ___ -G Galvanized Cast Iron | ___ -V Backwater Valve |
| ___ -J Auxiliary Inlet Connection | ___ -VP Vandal-Proof Secured Top |
| ___ -K Anchor Flange | ___ -Y Sediment Bucket |
| ___ -KC Anchor Flange with Clamp Collar | |
| ___ -P Trap Primer Connection | |

REV. E	DATE: 11/8/10	C.N. NO. 120285
DWG. NO. 58959	PRODUCT NO. Z730	

*REGULARLY FURNISHED UNLESS OTHERWISE SPECIFIED