

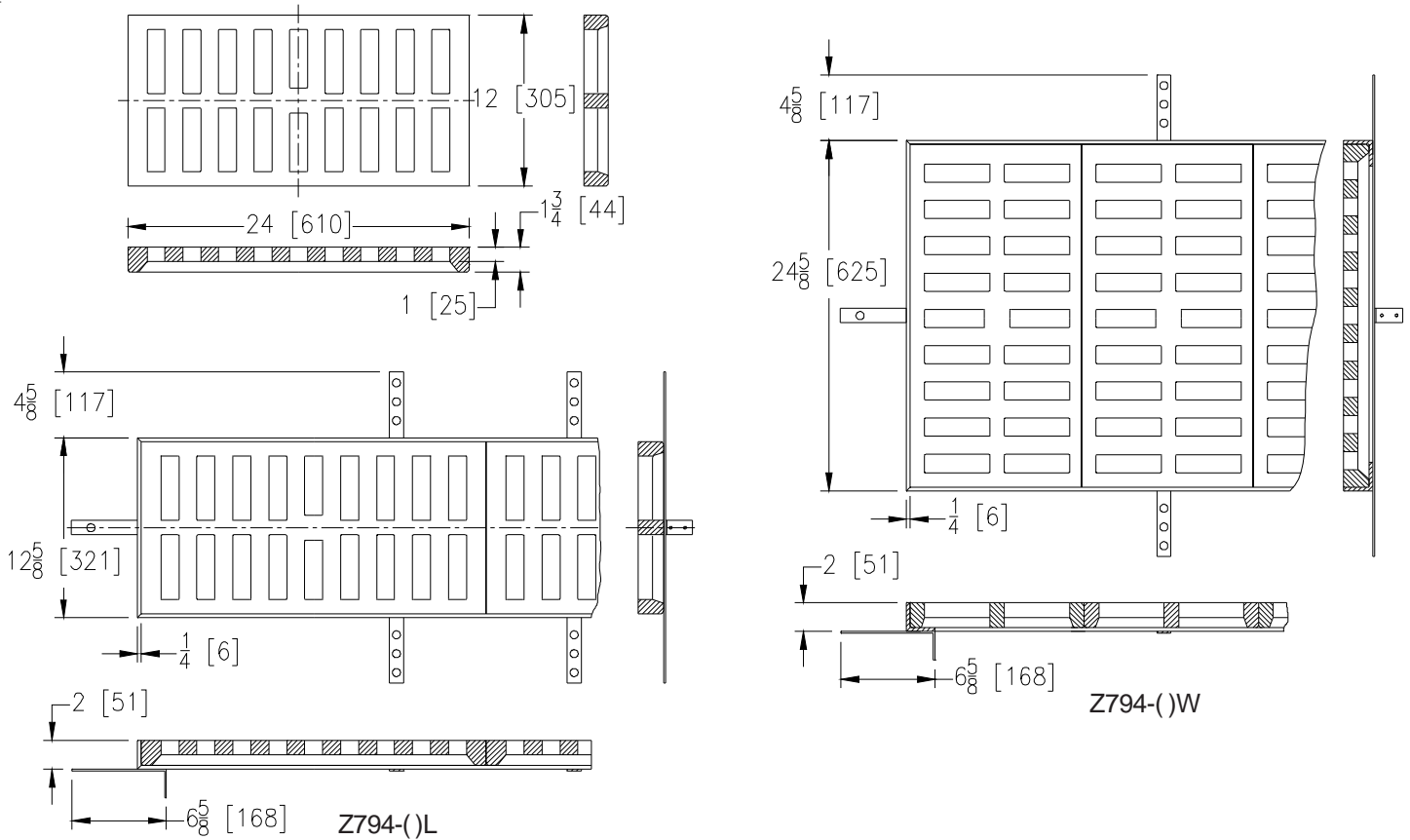


Z794 EXTRA-HEAVY DUTY GRATING

SPECIFICATION SHEET

TAG _____

Dimensional Data (inches and [mm]) are Subject to Manufacturing Tolerances and Change Without Notice



Product Number Suffix	No. of Grates w/Frames	Approx. Wt. Lbs. [kg]	Grate Open Area Sq. In. [cm ²]
Z794	Grate Only	40 [18]	94 [606]
Z794-1F	1	80 [36]	94 [606]
Z794-2L	2	154 [70]	188 [1213]
Z794-3L	3	228 [103]	282 [1819]
Z794-4L	4	303 [137]	376 [2426]

ENGINEERING SPECIFICATION ZURN Z794

12 X 24 [305 x 610] grate only, or Z794-()L or -()W Dura-Coated cast iron extra heavy-duty grating in fabricated steel frame with anchor straps.

OPTIONS (Check/specify appropriate options)

PREFIXES

- ___ Z D.C.C.I. Grate(s) and Fabricated Frame*
- ___ ZARB Plain Bronze Grate(s) and Frame
- ___ ZAB Polished Bronze Grate(s) and Frame
- ___ ZANB Polished Nickel Bronze Grate(s) and Stainless Steel Frame

SUFFIXES

- ___ -DG Duresist Grate
- ___ -G Galvanized Cast Iron
- ___ -TS Top Secured with Slotted Screws
- ___ -VP Vandal-Proof Secured Top
- ___ -()L Grating/Frame Placed in Long Dimension
- ___ -()W Grating/Frame Placed in Wide Dimension

REV. E	DATE: 11/8/10	C.N. NO. 120294
DWG. NO. 58967	PRODUCT NO. Z794	

*REGULARLY FURNISHED UNLESS OTHERWISE SPECIFIED