

AQUASPEC® FAUCETS

MODEL - Z82400 SERIES
SINGLE CONTROL FAUCET



TECHNICAL INFORMATION

FLOW: 2.2 GPM [8.3 L] PRESSURE COMPENSATING AERATOR*

MAXIMUM PRESSURE: 125 PSI

MAXIMUM TEMPERATURE: 160° F

CARTRIDGE STYLE - CERAMIC DISC MIXING CARTRIDGE WITH TEMPERATURE LIMIT STOP

* OTHER AERATORS AVAILABLE BY REQUEST

IMPORTANT THE WATER SUPPLY LINES MUST BE THOROUGHLY FLUSHED BEFORE INSTALLATION TO PREVENT FOREIGN MATTER AND DEBRIS FROM CLOGGING AND/OR DAMAGING INTERNAL COMPONENTS AND THEREBY PREVENTING THE FAUCET FROM FUNCTIONING PROPERLY

INSTALLATION INSTRUCTIONS

REMOTE SUPPLY ASSEMBLY

1. REMOVE REMOTE SUPPLY FAUCET BODY (#5) FROM PACKAGING.
2. SECURE GASKET (#8A) WITH ADHESIVE BACKING TO UNDERSIDE OF FAUCET BODY (#5).
3. PLACE FAUCET BODY (#5) ONTO SINK THROUGH PRE-DRILLED MOUNTING HOLE IN SINK. ALIGN FAUCET BODY WITH FLEX HOSES ORIENTED TOWARD BACK OF SINK AND MOUNTING STUD TOWARD FRONT. THE FAUCET TURNS ON BY LIFTING THE HANDLE FROM FRONT TO BACK. THE FAUCET TURNS OFF BY PUSHING DOWN ON HANDLE FROM BACK TO FRONT.
4. PLACE MOUNTING RING (#8C) ONTO MOUNTING STUD (#6). SMALL DRILLED HOLE IN MOUNTING RING SHOULD GO OVER MOUNTING STUD. SECURE FAUCET BODY (#5) WITH MOUNTING NUT (#8B).
5. INSTALL HANDLE (#1A)
 - 5.1. REMOVE COLORED HOT/COLD INDEX (ITEM #1C) FROM HANDLE BY PRESSING OUT FROM UNDERSIDE OF HANDLE (#1A)
 - 5.2. LOOSEN SETS CREW (#1B) USING 1/8" ALLEN WRENCH.
 - 5.3. SLIDE HANDLE ONTO STEM OF CERAMIC MIXING CARTRIDGE (#4)
 - 5.4. TIGHTEN SETS CREW (#1B) USING 1/8" ALLEN WRENCH. DO NOT OVER TIGHTEN.
 - 5.5. PRESS COLORED HOT/COLD INDEX (#1C) INTO HANDLE. IT MAY BE NECESSARY TO LUBRICATE THE O-RING ON THE HOT/COLD INDEX TO FACILITATE ASSEMBLY.
6. ATTACH RIGHT BRAIDED FLEX HOSE TO COLD LAVATORY SUPPLY. ATTACH LEFT BRAIDED FLEX HOSE TO HOT LAVATORY SUPPLY.

Z82100 FAUCET BASE ASSEMBLY

7. SECURE GASKET (#14) WITH ADHESIVE BACKING TO BOTTOM OF BASE ASSEMBLY (#15).
8. INSTALL BASE ASSEMBLY (#15) THROUGH PRE-DRILLED HOLE IN SINK.
9. SECURE BASE ASSEMBLY USING LOCK WASHER (#13) AND MOUNTING NUT (#12).
10. CONNECT BASE ASSEMBLY (#5) TO COUPLING (#10) USING FLEXIBLE HOSE (#11).

NOTE: FLEXIBLE SUPPLY HOSE WILL ACCOMMODATE FROM 4 INCHES TO 7 INCHES BETWEEN CENTER OF REMOTE SUPPLY BODY (#5) TO CENTER OF BASE ASSEMBLY (#15).

SPOUT ASSEMBLY

1. ASSEMBLE SPOUT (#16A) TO BASE ASSEMBLY (#5). FOR SWING SPOUT MOUNTING, USE 2 PLASTIC SPLIT WASHERS (#16C). FOR RIGID SPOUT MOUNTING, OMIT PLASTIC SPLIT WASHERS AND USE SPACER WASHER (#16E).
2. TURN SUPPLY WATER ON AND OPERATE FAUCET CHECKING FOR LEAKS.
3. INSTALL AERATOR INTO FAUCET AND HAND TIGHTEN INTO FAUCET SPOUT. IT MAY BE NECESSARY TO REMOVE AND CLEAN THE AERATOR AT START UP.

MAINTENANCE

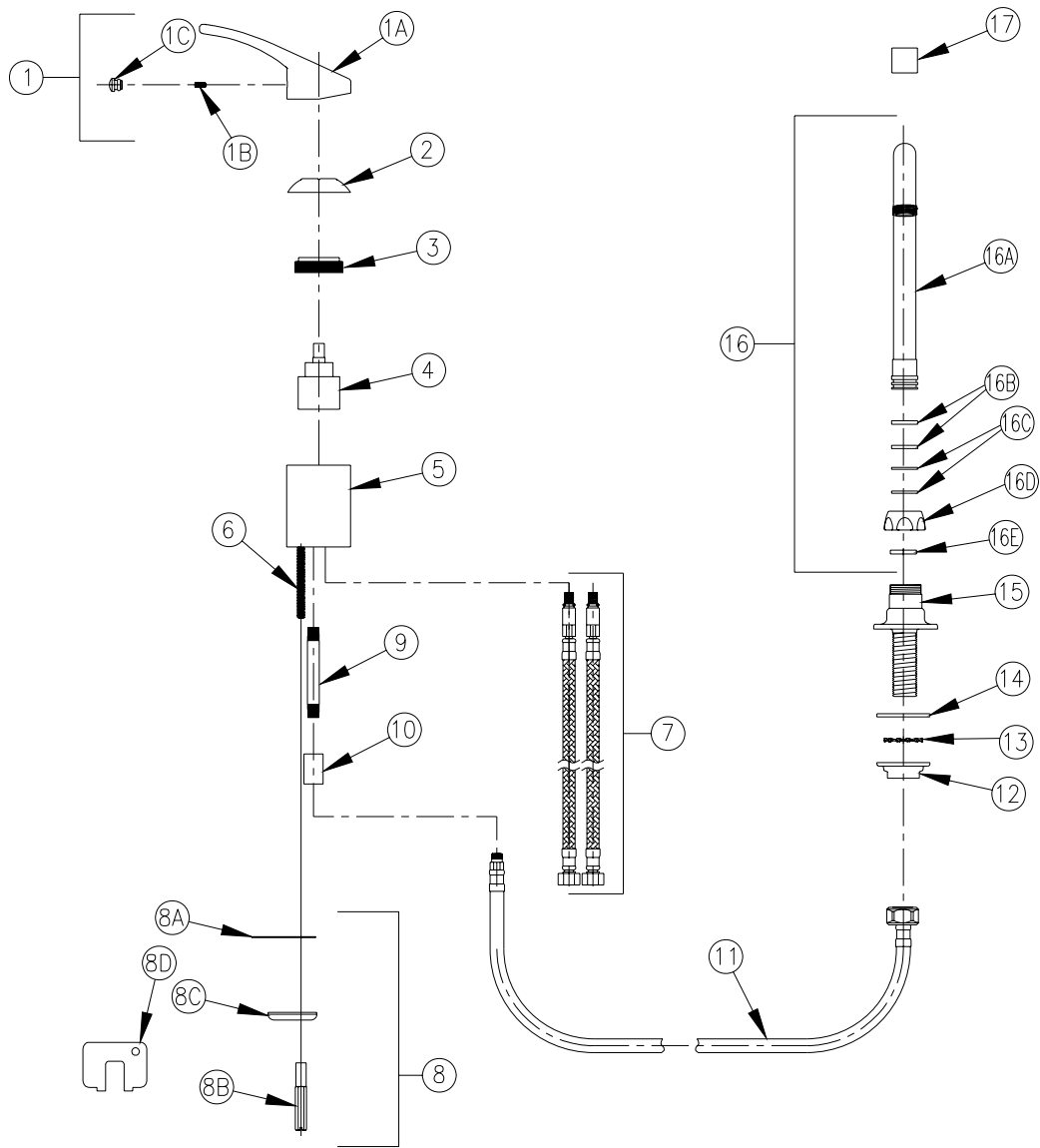
1. YOUR ZURN FAUCET HAS A HIGHLY POLISHED NICKEL CHROME PLATED FINISH. CLEAN WITH SOAP AND WATER OR A MILD CLEANER WHICH IS SAFE FOR CHROME PLATING. DO NOT USE ACIDS OR TOILET BOWL CLEANER AS THEY WILL DAMAGE THE FINISH.
2. AQUASPEC FAUCETS CONTAIN CERAMIC MIXING CARTRIDGES WHICH REQUIRE NO MAINTENANCE. TO REMOVE AND REPLACE THE CARTRIDGE:
 - 2.1. REMOVE HOT/COLD INDEX BUTTON (#1C) BY CAREFULLY PRYING LOOSE FROM UNDERSIDE OF HANDLE (#1A)
 - 2.2. LOOSEN SET SCREW (# 1B) IN HANDLE USING 1/8" ALLEN WRENCH.
 - 2.3. REMOVE HANDLE FROM CARTRIDGE STEM
 - 2.4. LOOSEN AND REMOVE DOMED CARTRIDGE FLANGE (# 2) USING FLANGE WRENCH (#8D) PROVIDED.
 - 2.5. LOOSEN AND REMOVE CARTRIDGE RETAINING NUT (#3)
 - 2.6. PULL CERAMIC MIXING CARTRIDGE (#4) BY PULLING ON STEM WHILE WIGGLING FROM SIDE-TO-SIDE
 - 2.7. INSTALL NEW CARTRIDGE USING THE ALIGNMENT PINS FOR PROPER ORIENTATION AND PROPER SEATING IN THE FAUCET BODY.
 - 2.8. REINSTALL HANDLE ASSEMBLY BY REVERSING STEPS 2.1 THROUGH 2.5.
3. TEMPERATURE LIMIT ADJUSTMENT – THE Z82400 FAUCET MAY BE ADJUSTED TO LIMIT THE MAXIMUM OPERATING TEMPERATURE.
 - 3.1. REMOVE CERAMIC MIXING CARTRIDGE (#4) PER MAINTENANCE INSTRUCTIONS 2.1 THROUGH 2.6 ABOVE.
 - 3.2. REMOVE RED TEMPERATURE LIMIT RING FROM MIXING CARTRIDGE.
 - 3.3. ROTATE RED TEMPERATURE LIMIT RING CLOCKWISE TO INCREASE MAXIMUM TEMPERATURE OR COUNTER-CLOCKWISE TO DECREASE MAXIMUM TEMPERATURE. RED TEMPERATURE LIMIT RING IS MARKED WITH ARROWS AND +/- TO INDICATE DIRECTION OF ROTATION AND EFFECT ON MAXIMUM TEMPERATURE.
 - 3.4. REPLACE RED TEMPERATURE LIMIT RING IN DESIRED ORIENTATION.
 - 3.5. REINSTALL HANDLE ASSEMBLY BY REVERSING STEPS 2.1 THROUGH 2.5.
 - 3.6 TEST MAXIMUM TEMPERATURE FOR ACCEPTABILITY AND REPEAT STEPS 3.1 THROUGH 3.5 IF NECESSARY.

Trouble Shooting Guide

Problem	Cause	Solution
FAUCET LEAKS FROM UNDER FAUCET HANDLE. ALL SUPPLIES ARE ON.	CARTRIDGE RETAINING NUT TOO LOOSE	REMOVE FAUCET HANDLE . TIGHTEN CARTRIDGE RETAINING NUT. DO NOT OVER TIGHTEN. TIGHTEN UNTIL NUT IS SNUG
NO WATER COMES OUT OF FAUCET SPOUT. ALL SUPPLIES ARE ON.	AERATOR IS CLOGGED.	REMOVE AERATOR. REMOVE DEBRIS AND REINSTALL AERATOR
WATER DEFLECTS AT AN ANGLE FROM THE FAUCET SPOUT	AERATOR HAS DEBRIS	REMOVE AERATOR. REMOVE DEBRIS AND REINSTALL AERATOR

REPLACEMENT PARTS

SINGLE CONTROL HANDLE ASSEMBLY	G63237
MOUNTING HARDWARE FOR Z82400 REMOTE FAUCET BODY	G63586
CERAMIC MIXING CARTRIDGE	63233001
SPOUT BASE ASSEMBLY	Z82100



Z824B0 PICTURED

Item	Part Number	Description	Qty.	Item	Part Number	Description	Qty.
1	G63237	Single Control Handle Assembly	1	9	65326001	Nipple	1
1A	63232002	Single Control Handle	1	10	65327001	Coupling	1
1B	63234001	1/4-20 x 3/8" Cup Point Set Screw	1	11	60249723	Flexible Hose, 12" Long	1
1C	92255001	Hot/Cold Index Button	1	12	59530002	Mounting Nut	1
2	62797001	Domed Cartridge Flange	1	13	61613018	Lockwasher	1
3	62795001	Cartridge Retaining Nut	1	14	60549003	Gasket	1
4	63233001	Ceramic Mixing Cartridge	1	15	Z82100	Base Assembly	1
5	92101001	Remote Supply Faucet Body	1	16	G61064	5-3/8" Gooseneck 'B' Spout	1
6	63238002	1/4-20 Mounting Stud	1	16A	60250002	5-3/8" Centerline Gooseneck Spout	1
7	G66621	12" S.S. Braided Flex Hoses	1	16B	58155018	O-Ring	2
8	G63586	Mounting Hardware	1	16C	59666001	Plastic Split Washer (Swing)	2
8A	63253001	Gasket	1	16D	59435001	Spout Nut	1
8B	63240001	1/4-20 UNC Mounting Nut	1	16E	59436001	Spacer Washer (Rigid)	1
8C	63594001	Mounting Ring	1	17	G63504	3/4"-27 Female Aerator - 2.2 GPM	1
8D	63264004	Dome Cartridge Flange Wrench	1				