

AQUASPEC® FAUCETS

MODEL - Z86300 SERIES
SINGLE BASIN METERING



TECHNICAL INFORMATION

FLOW: 0.25 GPC MAXIMUM; PRESET AT FACTORY TO 10 SECOND @ 80 PSI ADJUSTABLE

MAXIMUM PRESSURE: 125 PSI

MAXIMUM TEMPERATURE: 180°F

- CAN USE QUARTER TURN CERAMIC DISK CARTRIDGE

IMPORTANT THE WATER SUPPLY LINES MUST BE THOROUGHLY FLUSHED BEFORE INSTALLATION TO PREVENT FOREIGN MATTER AND DEBRIS FROM CLOGGING AND/OR DAMAGING INTERNAL COMPONENTS AND THEREBY PREVENTING THE FAUCET FROM FUNCTIONING PROPERLY

IMPORTANT THE IN-LINE FILTER ASSEMBLY INCLUDED WITH THIS FAUCET MUST BE INSTALLED AS INSTRUCTED TO FURTHER PREVENT FOREIGN MATTER AND DEBRIS FROM DAMAGING THE FAUCET AND TO ENSURE PROPER FUNCTIONING.

* INSTALLATION INSTRUCTIONS

1. THE WATER SUPPLY LINE MUST BE THOROUGHLY FLUSHED BEFORE FAUCET INSTALLATION.
2. REMOVE FAUCET BODY FROM CARTON AND PLACE GASKET (#6A) ON SHANK.
3. PLACE FAUCET ON SINK, MOUNT LOCKWASHER (#6B) AND MOUNTING NUT (#6C) ONTO SHANK FROM UNDER SINK.
4. HAND TIGHTEN MOUNTING NUT (#6C). MAKE SURE FAUCET IS CENTERED PROPERLY. DO NOT OVER TIGHTEN, YOU COULD DAMAGE THE FIXTURE.
5. ATTACH FILTER ASSEMBLY (#7) TO 3/8" LAVATORY SERVICE STOP. THE 1/2" PLASTIC WASHER (#7A) IS TO BE INSTALLED BETWEEN THE FILTER HOUSING (#7B) AND THE SERVICE STOP
6. ATTACH LAVATORY SUPPLY TO THE OUTLET OF THE FILTER ASS'Y. (#7) AND CONNECT TO FAUCET WITH RISER NUT (#6D).
7. OPTIONAL - POP-UP (-P)/ GRID STRAINER (-G)/HANDICAP OFFSET GRID DRAIN (-GH):
INSTALL POP-UP OR GRID STRAINER IN SINK OUTLET AND PLUMB WASTE CONNECTION.
8. IT IS RECOMMENDED THAT THE METERING CARTRIDGE (#3) IS REMOVED AND THE SUPPLY LINE AND FAUCET FLUSHED PRIOR TO OPERATING FAUCET. REMOVE METERING CARTRIDGE (#3) PER INSTRUCTIONS IN MAINTENANCE SECTION 2. REPLACE HANDLE NUT ASSEMBLY (#2) WITHOUT THE METERING CARTRIDGE INSTALLED. TURN ON SUPPLY TO FLUSH LINES.
9. TURN SUPPLY WATER ON AND OPERATE THE FAUCET WHILE CHECKING FOR LEAKS.
10. REPLACE METERING CARTRIDGE (#3) PER INSTRUCTIONS IN MAINTENANCE SECTION 2.
11. INSTALL AERATOR (#5) INTO FAUCET AND HAND TIGHTEN.
12. METERING CARTRIDGE IS FACTORY PRESET FOR A 10 SECOND CYCLE AT 80 PSI, IF ADJUSTMENT IS NECESSARY, SEE "ADJUSTING THE FLOW" SECTION (PAGE 2).

MAINTENANCE

1. YOUR ZURN AQUASPEC FAUCET HAS A HIGHLY POLISHED NICKEL CHROME PLATED FINISH. CLEAN WITH SOAP AND WATER OR A MILD CLEANER WHICH IS SAFE FOR CHROME PLATING. DO NOT USE ACIDS OR TOILET BOWL CLEANER AS THEY WILL DAMAGE THE FINISH.
2. METERING CARTRIDGE (#3) REMOVAL AND REPLACEMENT
 - 2.1. REMOVE COLORED INDEX BUTTON (#1C) FROM HANDLE (#1A)
 - 2.2. LOOSEN SET SCREW (#1B) IN HANDLE WITH 3/32" ALLEN WRENCH
 - 2.3. PULL UP ON HANDLE TO REMOVE FROM STEM (#2C) OF HANDLE NUT ASSEMBLY (#2)
 - 2.4. REMOVE HANDLE NUT ASSEMBLY (#2) USING 1-1/8" HEX 6-POINT SOCKET
 - 2.5. REMOVE METERING CARTRIDGE (#3) BY LIFTING OUT OF FAUCET BODY (#4). IT MAY BE NECESSARY TO OPEN THE SUPPLY STOP SLIGHTLY TO ALLOW WATER PRESSURE TO PUSH THE METERING CARTRIDGE UPWARD.
 - 2.6. INSPECT METERING CARTRIDGE (#3) FOR WORN PARTS, DAMAGED PARTS AND ANY CONTAMINATION THAT MAY BE PREVENTING THE METERING CARTRIDGE FROM MOVING FREELY OR SEATING. OTHER THAN CLEANING ANY TRAPPED DEBRIS, THERE ARE NO SERVICEABLE PARTS IN THE METERING CARTRIDGE. CONTAMINATED OR DAMAGED METERING CARTRIDGE ASSEMBLIES SHOULD BE REPLACED.
 - 2.7. REVERSE STEPS 2.1 THROUGH 2.5 FOR RE-ASSEMBLY. METERING CARTRIDGE (#3) WILL SIT SLIGHTLY ABOVE BODY (#4) PRIOR TO MOUNTING OF HANDLE NUT ASSEMBLY. TIGHTEN CAP (#2G) WITH 1-1/8" HEX 6-POINT SOCKET UNTIL NO WATER IS LEAKING FROM UNDER THE HANDLE NUT ASSEMBLY WHEN THE FAUCET IS RUNNING. HOLD DOWN HANDLE (#1) WHILE TIGHTENING SET SCREW (#1B) TO ENSURE PROPER SEATING
3. IT MAY BE NECESSARY TO REPLACE OR BACK FLUSH THE IN-LINE FILTER CARTRIDGE AND AERATOR PERIODICALLY TO REMOVE COLLECTED SEDIMENT AND DEBRIS

ADJUSTING THE FLOW ON ZURN METERING FAUCET

1. METERING FAUCETS ARE FACTORY PRESET FOR A 10 SEC. CYCLE AT 80 PSI.
2. ACTUATE FAUCET 3 TO 5 TIMES TO REMOVE ANY TRAPPED AIR IN THE SUPPLY LINE OR FAUCET
3. REMOVE HANDLE (#1) PER INSTRUCTIONS IN MAINTENANCE SECTION 2.1 THROUGH 2.3 TO EXPOSE ADJUSTMENT NUT (#2F)
4. INCREASE CYCLE TIME BY TIGHTENING ADJUSTMENT NUT (#2F) 1/2 TURN CLOCKWISE. DECREASE CYCLE TIME BY LOOSENING ADJUSTMENT NUT 1/2 TURN COUNTERCLOCKWISE. CHECK FOR DESIRED CYCLE TIME BY ACTUATING FAUCET WITH HANDLE (#1) IN PLACE ON STEM (#2C)

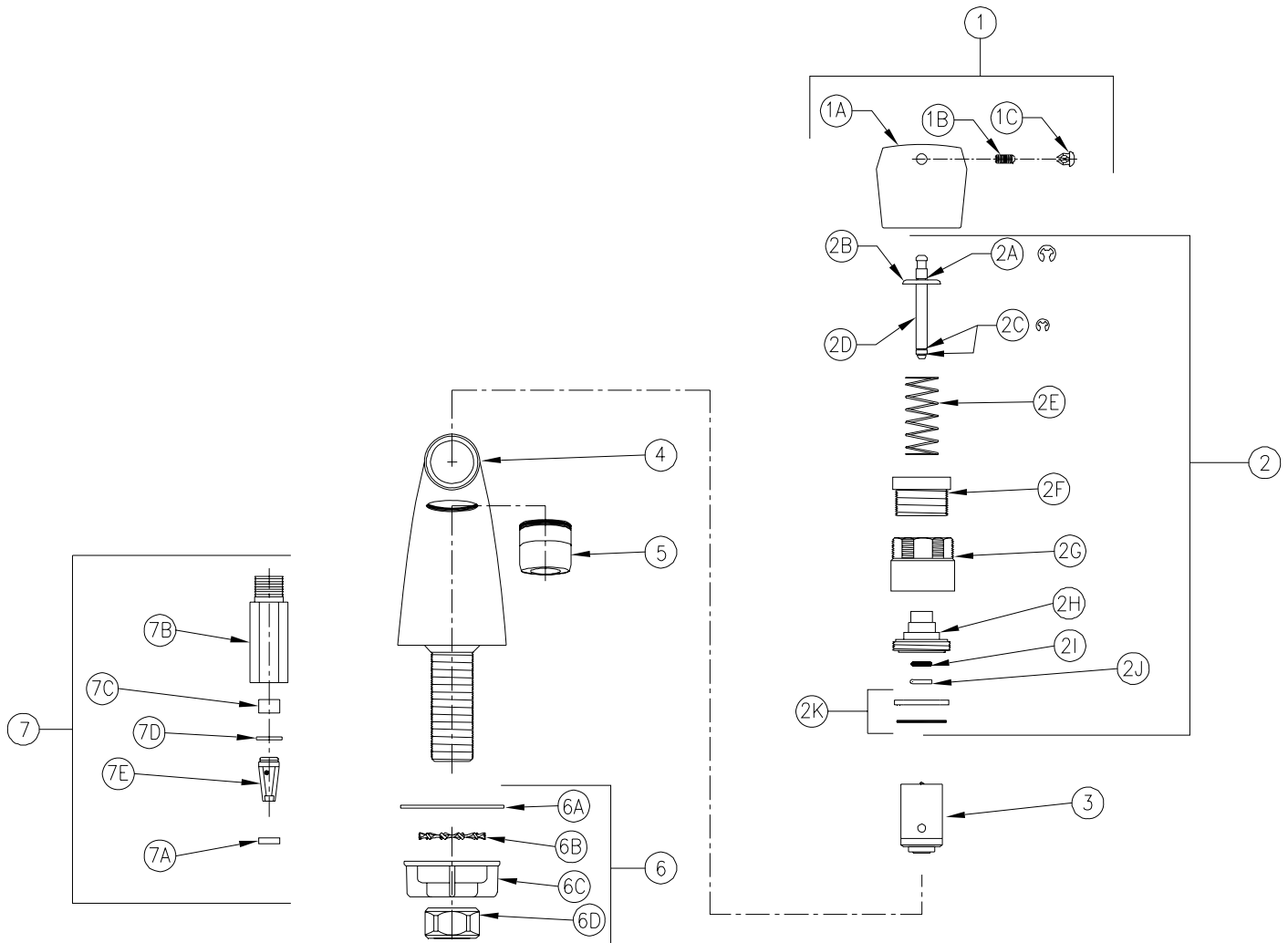
REPLACEMENT PARTS

HANDLE NUT ASSEMBLY	G60561
METERING CARTRIDGE ASSEMBLY	G61754
HANDLE ASSEMBLY	G60522
FILTER ASSEMBLY	G66616

ZURN INDUSTRIES, INC.
COMMERCIAL BRASS OPERATIONS
2640 SOUTH WORK STREET
FALCONER, N.Y. 14733
PHONE: 1-716-665-1132 FAX: 1-716-665-1135
WORLD WIDE WEB: www.zurn.com



* Installation Instructions are revised frequently.
Please access website for the latest revision.



Z86300 PICTURED

ITEM	PART#	DESCRIPTION	QTY	ITEM	PART#	DESCRIPTION	QTY
1	G60522	METERING HANDLE ASSEMBLY	1	2K	G65503	CAP SEALING WASHER ASSEMBLY	1
1A	60601003	COLD METERING HANDLE	1	65431002	PLASTIC RING	1	
1B	62705001	SET SCREW	1	65432001	O-RING	1	
1C	G60558	METERING INDEX BUTTONS-H,C	1	3	G61754	METERING CARTRIDGE ASS'Y	1
	60460001	HOT INDEX	1	4	61483004	SINGLE WATER BODY	1
	60460002	COLD INDEX	1	5	G63561	13/16"-27 MALE AERATOR	1
	60460003	TEMPERED INDEX	1	6	G63367	MOUNTING HARDWARE	1
2	G60561	HANDLE NUT ASSEMBLY	1	6A	60549001	GASKET	1
2A	60465001	"E" RING	1	6B	61613019	LOCKWASHER	1
2B	60464001	"E" RING	1	6C	59530002	MOUNTING NUT	1
2C	60451003	STEM	1	6D	59532001	1/2" NPSM RISER NUT	1
2D	60450001	SPRING SEAT	1	7	G66616	FILTER ASS'Y.	1
2E	60447001	SPRING	1	7A	63982004	WASHER	1
2F	60446001	ADJUSTMENT NUT	1	7B	66241001	HOUSING	1
2G	60452001	CAP	1	7C	92147001	FLOW CONTROL	1
2H	60456001	STEM HOUSING	1	7D	92149001	GASKET	1
2I	62499107	O-RING	1	7E	60475001	FILTER	1
2J	60458001	O-RING RETAINER	1				

Metering Faucet Trouble Shooting Guide

Problem	Cause	Solution
No water is coming out faucet & all supply stops are on.	Clogged aerator.	Clean aerator (#5) screen
	Clogged filter assembly.	Shut off water. Remove filter assembly (#7) from lavatory supply stop and rinse debris from filter. Replace filter assembly and turn on water to faucet.
Faucet is shutting off too quickly.	Timing nut needs to be adjusted.	See "ADJUSTING THE FLOW ON ZURN METERING FAUCET" (page 2)
	Sealing washer assy (#2K) could be damaged.	Shut off water, remove handle per maintenance instruction 2. Clean any debris around sealing washer assy (#2K). Replace and test faucet.
	Pin / Orifice area of cartridge has been damaged.	Shut off water, remove metering cartridge per maintenance instruction 2. Clean any debris around pin & orifice assembly by pressing down multiple times on the pin with the small spring on top of metering cartridge. Replace and test faucet.
	Schraeder valve is damaged (valve in center of cartridge).	Replace metering cartridge G61754.
Faucet is running too long.	Timing nut needs to be adjusted.	See "ADJUSTING THE FLOW ON ZURN METERING FAUCET" (page 2).
	Pin / Orifice area of cartridge is partially clogged.	Shut off water, remove metering cartridge per maintenance instruction 2. Clean any debris around pin & orifice assembly by pressing down multiple times on the pin with the small spring on top of metering cartridge. Replace and test faucet.
Faucet will not shut off.	Handle nut has been over torqued.	Shut off water, remove handle, and loosen handle nut. Tighten hand tight, plus 1/2 - 1 turns with wrench. Replace and test faucet
	Timing nut needs to be adjusted.	See "ADJUSTING THE FLOW ON ZURN METERING FAUCET" (page 2).
	Pin / Orifice area of cartridge is clogged.	Shut off water, remove metering cartridge per maintenance instruction 2. Clean any debris around pin & orifice assembly by pressing down multiple times on the pin with the small spring on top of metering cartridge. Replace and test faucet.
	Cartridge is damaged.	Replace metering cartridge G61754
Faucet is making noise at shutoff.	Air in lines during new construction.	Air in the lines should naturally work its way out over time. Cycle the valve repeatedly to expedite process.
	Continuous air in plumbing lines.	Reduce closing noise by slightly turning down (closing) the lavatory supply stops.