

Location: _____

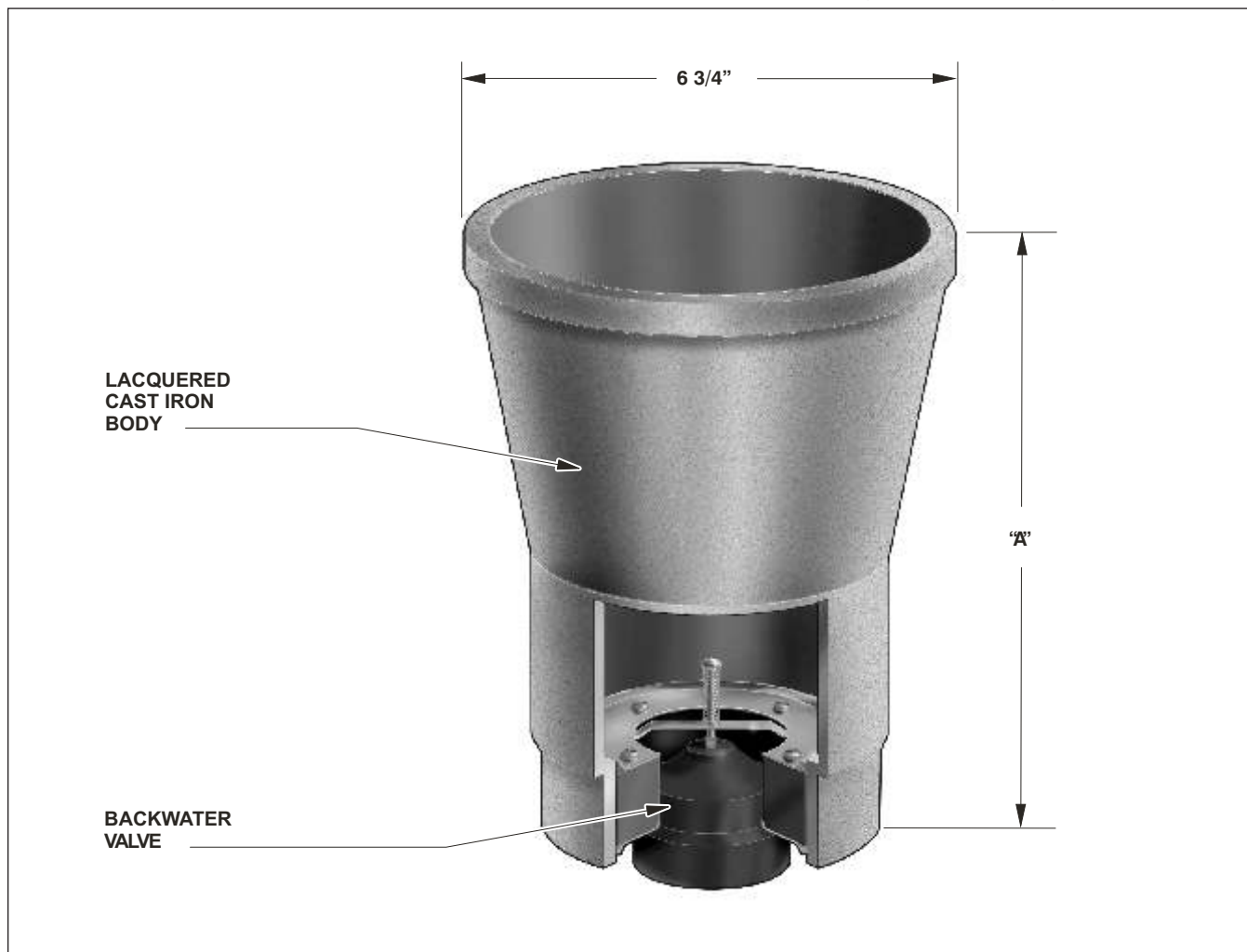


F1790

**INDIRECT WASTE FUNNEL
WITH BACKWATER VALVE**

Specification: MIFAB Series F1790 lacquered cast iron indirect waste funnel with backwater valve.

Function: Used in hospitals and laboratories with indirect waste lines installed above the floor. The funnel will receive condensate, drip or waste water from the indirect waste lines. MIFAB's MI-950 deep seal trap connected to MIFAB's M-500 Series of trap seal primers are recommended for use with the F1790 to prevent sewer gases from entering the room.



| PIPE SIZE | BODY HEIGHT "A" | | |
|--------------|-------------------|----------------|----------------------------|
| | NO HUB (STANDARD) | PUSH ON (P) | PVC / ABS (-30) / (-31) |
| 2" (51) | 10" (254) | 10 3/8" (263) | 10 3/8" (263) |
| 3" (76) | 10" (254) | 10 3/8" (263) | 10 3/8" (263) |
| 4" (102) | 10" (254) | 10 3/8" (263) | 10 3/8" (263) |
| 6" (152) | 8 3/4" (222) | - | - |

SUFFIX OPTIONAL VARIATIONS:

- 11 Acid resistant epoxy coated body
- 13 Galvanized body
- 21 Secondary flat stainless steel strainer (2", 3", 4")
- 30 PVC socket connection body
- 31 ABS socket connection body

SUFFIX

- ARRA ARRA (Stimulus Act) compliant product
- BA Buy American Act compliant product
- (Standard) No hub outlet
- P Push on outlet
- PA Pennsylvania Steel Act compliant product

Job Name: _____

Page No: _____

Section No: _____

Contractor: _____

Schedule No: _____

Purchase Order No: _____

MIFAB reserves the right to make changes in material and design without formal notice and obligation.

USA: 1-800-465-2736 www.mifab.com CAN: 1-800-387-3880